

F.A.U. RTE.	SECTION	COUNTY	TOTAL SHEETS	SHEET NO.
3509	00-00173-00-FF	COOK	246	45
STA.		TO STA.		
FED. ROAD DIST. NO. 7		ILLINOIS	FED. AID PROJECT	

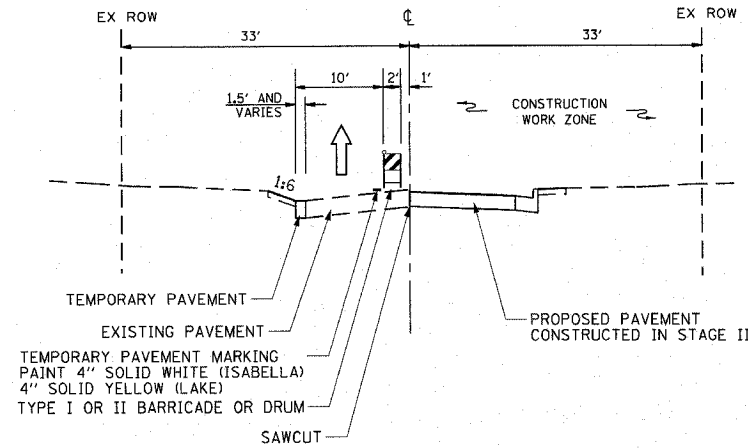
STAGE 2A: LAKE AVE. TO 10TH ST., WEST SIDE

1. INSTALL DETOUR PER PLAN DETAILS AND CLOSE SHERIDAN RD. TO SOUTHBOUND TRAFFIC WITHIN LIMITS SPECIFIED. INSTALL TEMPORARY TRAFFIC SIGNALS AND ESTABLISH ONE-WAY NORTHBOUND TRAFFIC ON EAST SIDE OF SHERIDAN RD. FOLLOW STANDARDS 701501-03, 701502-01, AND 701701-04 FOR STAGING TRANSITIONS AND SIGN SPACING.
2. THE FOLLOWING OPERATIONS TO BE PERFORMED ALONG SHERIDAN RD.:
 - REMOVE EXISTING PAVEMENT AND CURB & GUTTER.
 - PERFORM NECESSARY UTILITY ADJUSTMENTS.
 - CONSTRUCT MAINLINE STORM SEWER AND MANHOLES.
 - CONSTRUCT LATERALS WITH DRAINAGE STRUCTURES, AND LATERALS FOR OTHER SIDE OF ROADWAY TO CENTERLINE.
 - MAINTAIN OPPOSITE SIDE DRAINAGE TO EXISTING COMBINED SEWER.
 - CONSTRUCT SANITARY SERVICE CONNECTIONS FROM R.O.W. TO 5' OF EXISTING COMBINED SEWER.
 - BY METHOD OF BORING AT TREE LOCATIONS, CONNECT TO EXISTING.
 - INSTALL CONDUIT AND FOUNDATIONS FOR PERMANENT TRAFFIC SIGNALS.
 - CONSTRUCT AGGREGATE BASE, CONCRETE CURB & GUTTER, PCC BASE COURSE AND HMA BINDER COURSE (12.5' PAVED WIDTH).
 - PLACE TEMPORARY EROSION CONTROL SEEDING ON THE CONSTRUCTION SIDE OF THE ROADWAY.

STAGE 3B: ISABELLA ST. & LAKE AVE.

LAKE AVE. CONSTRUCTION IS TO OCCUR DURING SHERIDAN RD. STAGE 1B. ISABELLA ST. CONSTRUCTION IS TO OCCUR DURING SHERIDAN RD. STAGE 2B.

1. ESTABLISH ONE-WAY WESTBOUND TRAFFIC ON SOUTH SIDE OF LAKE AVE.
2. ESTABLISH ONE-WAY EASTBOUND TRAFFIC ON SOUTH SIDE OF ISABELLA ST. AS SHOWN ON PLANS.
3. THE FOLLOWING OPERATIONS ARE TO BE PERFORMED ALONG THE NORTH SIDE OF LAKE AVE. AND ISABELLA ST.:
 - REMOVE EXISTING PAVEMENT AND CURB & GUTTER.
 - PERFORM NECESSARY UTILITY ADJUSTMENTS.
 - REMOVE COMBINED SEWER AND/OR FILL SEWER AND MANHOLES.
 - CONSTRUCT NORTH STORM SEWER LATERALS AND DRAINAGE STRUCTURES.
 - INSTALL UNIT DUCT FOR STREET LIGHTING.
 - CONSTRUCT AGGREGATE BASE, CONCRETE CURB & GUTTER, PCC BASE COURSE AND HMA BINDER COURSE.
 - COMPLETE LANDSCAPING.
 - OPEN ROADWAY TO TWO-WAY TRAFFIC.



STAGE 3A TYPICAL SECTION
(LOOKING EAST)
ISABELLA STREET (EASTBOUND)
LAKE AVENUE (WESTBOUND)

WINTER SHUTDOWN: DECEMBER 1 TO MARCH 1

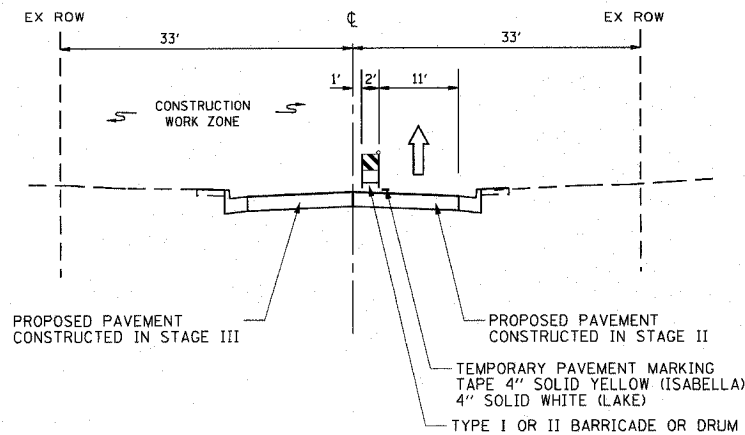
FOLLOWING STAGE 2A PREPARE ROADWAY FOR WINTER SHUTDOWN. TEMPORARY PAVEMENT MARKINGS SHALL BE CONSISTANT WITH THE PROPOSED PAVEMENT MARKING PLAN. SOUTH OF LAKE AVE. MARKINGS WILL BE ON THE NEW BINDER. NORTH OF LAKE AVE. MARKING WILL BE ON EXISTING PAVEMENT AND NEW BINDER.

STAGE 4: SHERIDAN RD., ISABELLA ST., LAKE AVE.

1. THE FOLLOWING OPERATIONS ARE TO BE COMPLETED WHILE MAINTAINING TWO-WAY TRAFFIC USING STANDARD 701502:
 - COMPLETE ELECTRICAL WORK.
 - COMPLETE LANDSCAPING.
 - CONSTRUCT HMA SURFACE COURSE.
 - INSTALL PERMANENT PAVEMENT MARKINGS.
 - FINAL CLEANUP AND PUNCHLIST.

STAGE 2B: LAKE AVE. TO 10TH ST., EAST SIDE

1. ESTABLISH ONE-WAY NORTHBOUND TRAFFIC ON WEST SIDE OF SHERIDAN ROAD. FOLLOW STANDARDS 701501-03, 701502-01, AND 701701-04 FOR STAGING TRANSITIONS AND SIGN SPACING.
2. THE FOLLOWING OPERATIONS TO BE PERFORMED ALONG SHERIDAN RD.:
 - REMOVE EXISTING PAVEMENT AND CURB & GUTTER.
 - PERFORM NECESSARY UTILITY ADJUSTMENTS.
 - REMOVE EXISTING COMBINED SEWER AND CONSTRUCT PROPOSED SANITARY MAINLINE.
 - COMPLETE SANITARY SEWER CONNECTIONS BOTH SIDES, USING METHOD OF BORING AT TREE LOCATIONS.
 - CONSTRUCT EAST STORM SEWER LATERALS AND INSTALL DRAINAGE STRUCTURES.
 - INSTALL CONDUIT AND FOUNDATIONS FOR PERMANENT TRAFFIC SIGNALS.
 - CONSTRUCT AGGREGATE BASE, CONCRETE CURB & GUTTER, PCC BASE COURSE AND HMA BINDER COURSE.
 - INSTALL PERMANENT TRAFFIC SIGNALS.
 - PLACE TEMPORARY EROSION CONTROL SEEDING ON THE CONSTRUCTION SIDE OF THE ROADWAY.
 - OPEN SHERIDAN RD. TO TWO-WAY TRAFFIC WITHIN LIMITS SPECIFIED.



STAGE 3B TYPICAL SECTION
(LOOKING EAST)
ISABELLA STREET (EASTBOUND)
LAKE AVENUE (WESTBOUND)

STAGE 3A: ISABELLA ST. & LAKE AVE.

LAKE AVE. CONSTRUCTION IS TO OCCUR DURING SHERIDAN RD. STAGE 1B. ISABELLA ST. CONSTRUCTION IS TO OCCUR DURING SHERIDAN RD. STAGE 2B.

1. CLOSE LAKE AVE. TO EASTBOUND TRAFFIC FROM 5TH ST TO SHERIDAN RD. ESTABLISH ONE-WAY WESTBOUND TRAFFIC ON NORTH SIDE OF LAKE AVE.
2. CLOSE ISABELLA TO WESTBOUND TRAFFIC FROM EAST SIDE ISABELLA/ASBURY INTERSECTION TO SHERIDAN RD. ESTABLISH ONE-WAY EASTBOUND TRAFFIC ON NORTH SIDE OF ISABELLA ST.
3. THE FOLLOWING OPERATIONS TO BE PERFORMED ALONG THE SOUTH SIDE OF LAKE AVE. AND ISABELLA ST.:
 - REMOVE EXISTING PAVEMENT AND CURB & GUTTER.
 - PERFORM NECESSARY UTILITY ADJUSTMENTS.
 - CONSTRUCT MAINLINE STORM SEWER AND MANHOLES.
 - CONSTRUCT SOUTH LATERALS WITH DRAINAGE STRUCTURES, NORTH LATERALS TO CENTERLINE.
 - MAINTAIN NORTH SIDE DRAINAGE STRUCTURES TO EXISTING COMBINED SEWER.
 - CONSTRUCT MAINLINE SANITARY SEWER AND SERVICE CONNECTIONS BY METHOD OF BORING AT TREE LOCATIONS.
 - INSTALL UNIT DUCT FOR STREET LIGHTING.
 - CONSTRUCT AGGREGATE BASE, CONCRETE CURB & GUTTER, PCC BASE COURSE AND HMA BINDER COURSE.
 - PLACE TEMPORARY EROSION CONTROL SEEDING ON THE SOUTH SIDE OF LAKE AVE. AND ISABELLA ST.

REVISIONS	
NAME	DATE

ILLINOIS DEPARTMENT OF TRANSPORTATION
SUGGESTED CONSTRUCTION PROCEDURE
AND MAINTENANCE OF TRAFFIC
TYPICAL SECTIONS AND NOTES

ISABELLA STREET

DATE 7/13/07

DRAWN BY LTD

CHECKED BY BJL