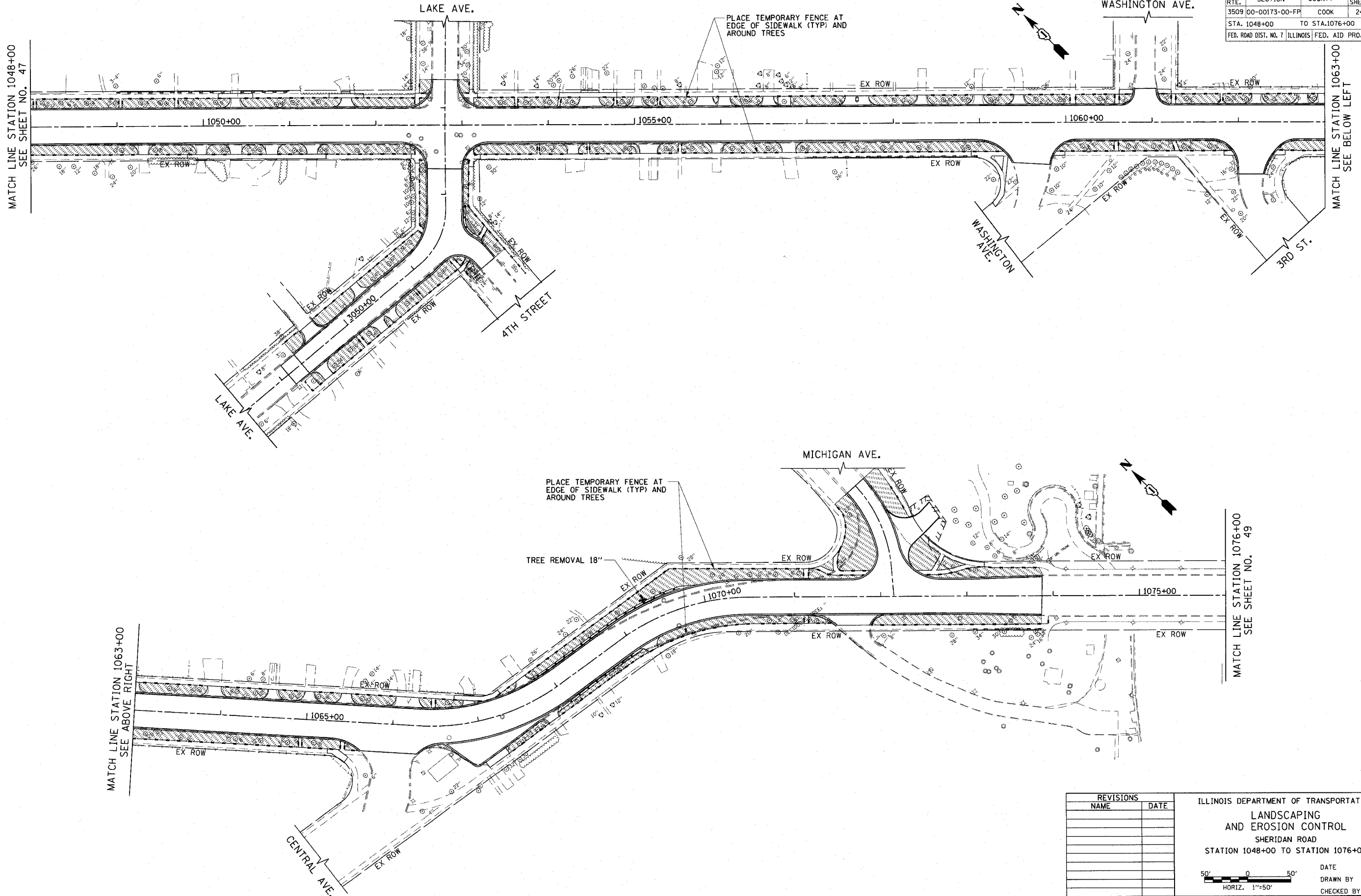


F.A.U. RTE.	SECTION	COUNTY	TOTAL SHEETS	SHEET NO.
3509	00-00173-00-FP	COOK	246	48
STA. 1048+00		TO STA. 1076+00		
FED. ROAD DIST. NO. 7 ILLINOIS FED. AID PROJECT				

PLOT DATE = 7/12/2007
 PLOT SCALE = 50,00000 / IN.
 USER NAME = b.j.holman

1051 PERIMETER DRIVE, SUITE 1025
 SCHALMERSBURG, ILLINOIS 60173
 (847) 605-8900



REVISIONS	
NAME	DATE

ILLINOIS DEPARTMENT OF TRANSPORTATION
 LANDSCAPING
 AND EROSION CONTROL
 SHERIDAN ROAD
 STATION 1048+00 TO STATION 1076+00

DATE 7/13/07
 DRAWN BY LTD
 CHECKED BY BJL

50' 0 50'
 HORIZ. 1"=50'