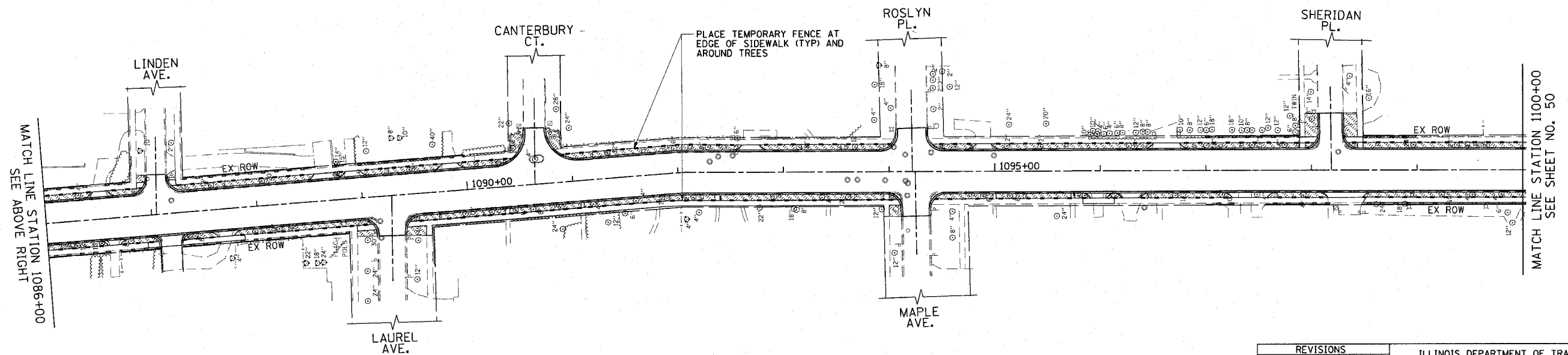
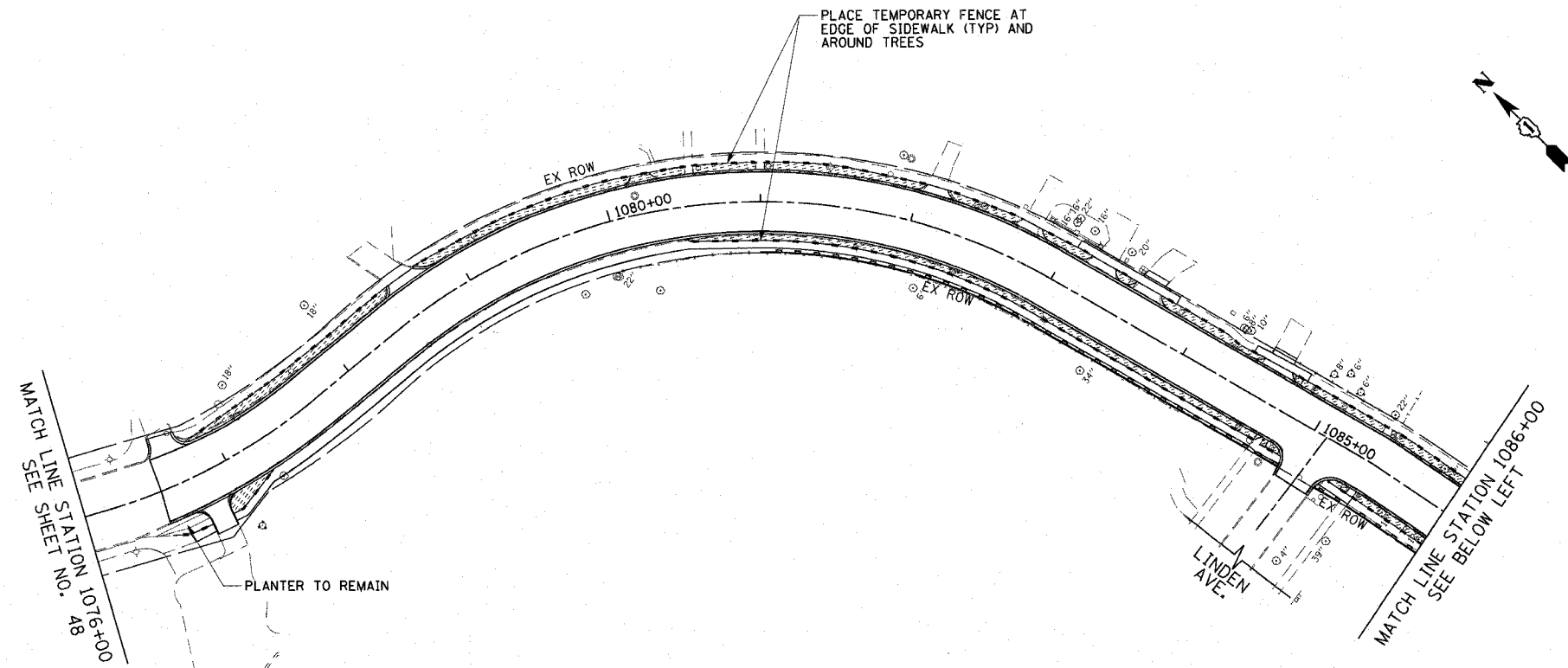


F.A.U. RTE.	SECTION	COUNTY	TOTAL SHEETS	SHEET NO.
3509	00-00173-00-FP	COOK	246	49
STA. 1076+00		TO STA. 1100+00		
FED. ROAD DIST. NO. 7		ILLINOIS	FED. AID PROJECT	

PLOT DATE = 7/12/2007
 PLOT SCALE = 1"=50'
 USER NAME = bjoalman



REVISIONS	
NAME	DATE

ILLINOIS DEPARTMENT OF TRANSPORTATION
 LANDSCAPING
 AND EROSION CONTROL
 SHERIDAN ROAD
 STATION 1076+00 TO STATION 1100+00

DATE 7/13/07
 DRAWN BY LTD
 CHECKED BY BJL

HORIZ. 1"=50'

1051 PERIMETER DRIVE, SUITE 1025
 SCHAUMBURG, ILLINOIS 60173
 (847) 605-5600

