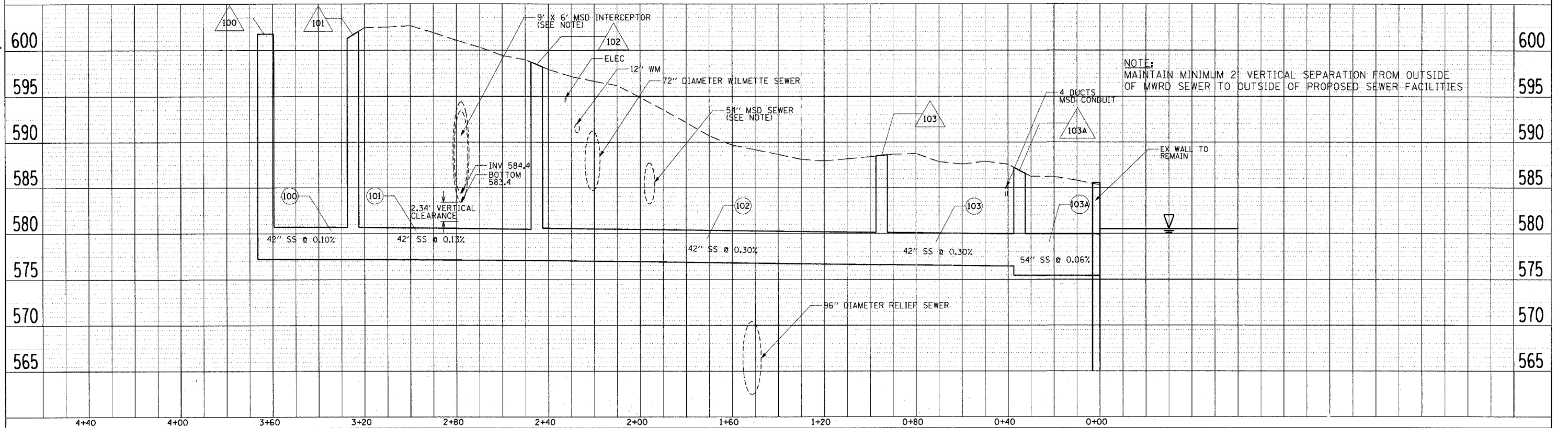
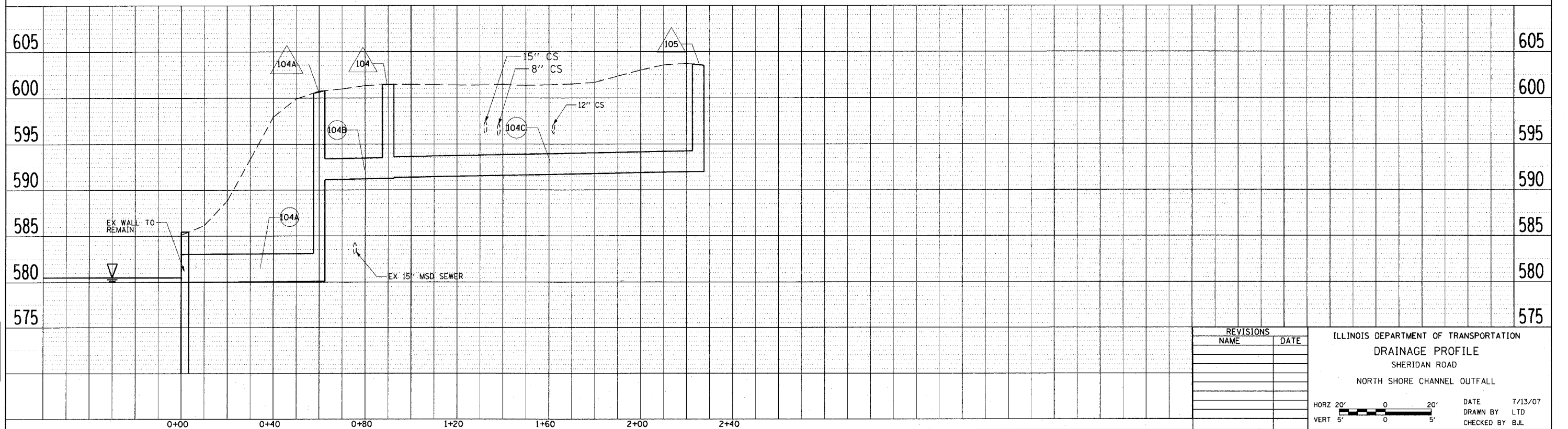


F.A.U. RTEL	SECTION	COUNTY	TOTAL SHEETS	SHEET NO.
3509	00-00173-00-PP	COOK	246	72
NORTH SHORE CHANNEL OUTFALL				
FED. ROAD DIST. NO. 7 ILLINOIS FED. AID PROJECT				

STORM SEWER OUTFALL TO NORTH SIDE OF NORTH SHORE CHANNEL



STORM SEWER OUTFALL TO SOUTH SIDE OF NORTH SHORE CHANNEL



REVISIONS	
NAME	DATE

ILLINOIS DEPARTMENT OF TRANSPORTATION  
 DRAINAGE PROFILE  
 SHERIDAN ROAD  
 NORTH SHORE CHANNEL OUTFALL

HORZ 20' 0 20'  
 VERT 5' 0 5'

DATE 7/13/07  
 DRAWN BY LTD  
 CHECKED BY BJL

PLAN SURVEYED BY: [ ] DATE: [ ]  
 ALIGNED AND CHECKED BY: [ ]  
 NOTE BOOK NO. [ ]  
 FILE NAME: [ ]  
 USER NAME: [ ]

PROFILE SURVEYED BY: [ ] DATE: [ ]  
 CHECKED BY: [ ]  
 STRUCTURE NOTATIONS: [ ]  
 NOTE BOOK NO. [ ]

1051 PERIMETER DRIVE, SUITE 1025  
 SCHAMBERG, ILLINOIS 60173  
 (847) 955-9800

**TranSystems**