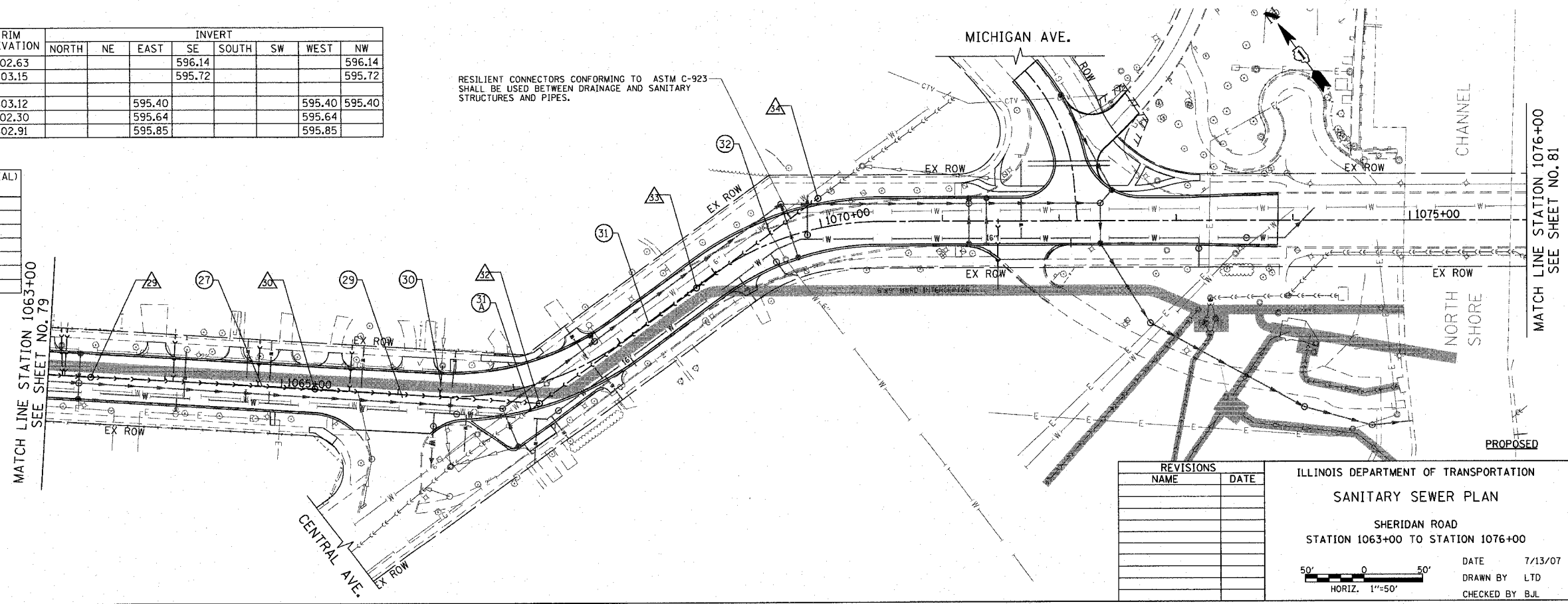
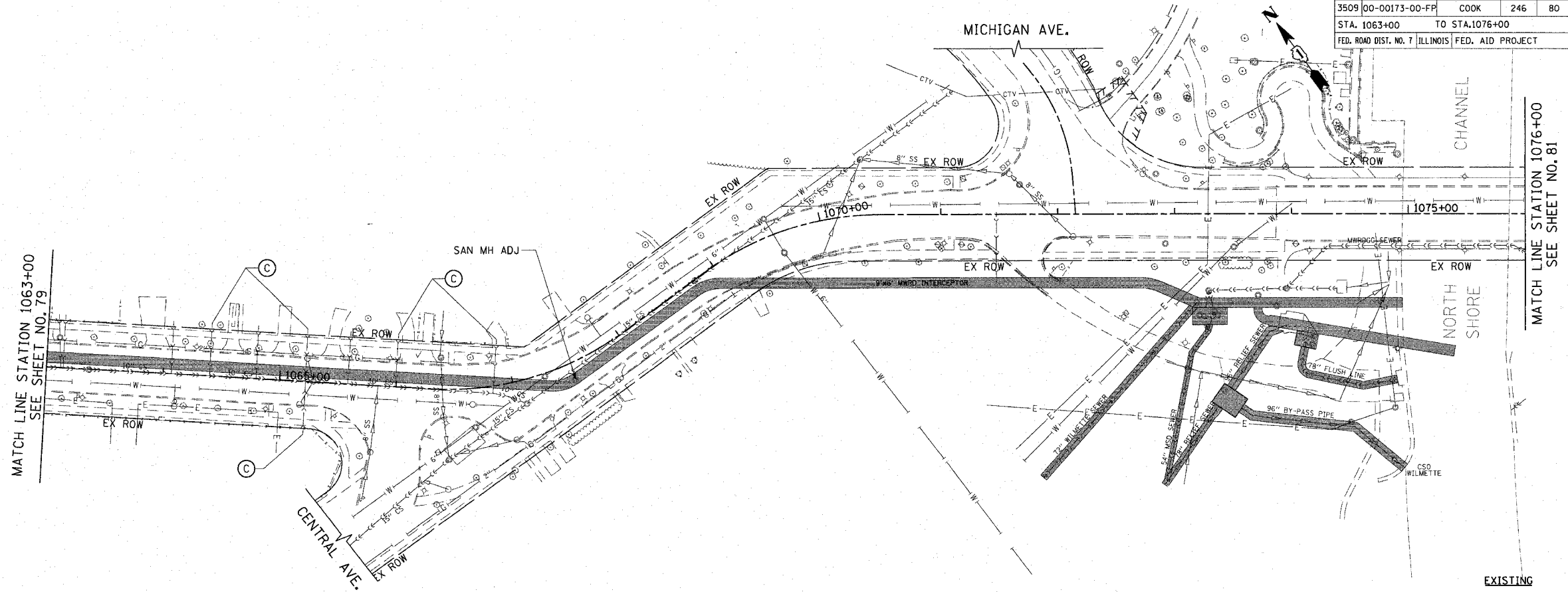


F.A.U. RTE.	SECTION	COUNTY	TOTAL SHEETS	SHEET NO.
3509	00-00173-00-FP	COOK	246	80
STA. 1063+00		TO STA. 1076+00		
FED. ROAD DIST. NO. 7 ILLINOIS FED. AID PROJECT				



SCHEDULE OF SANITARY SEWER STRUCTURES

STRUCTURE NUMBER	STATION	OFFSET (FT)	TYPE	FRAME & GRATE	RIM ELEVATION	INVERT								
						NORTH	NE	EAST	SE	SOUTH	SW	WEST	NW	
29	1063+36.5	0.4' RT	SAN MH TA 4' DIA	T1 F, CL	602.63				596.14					596.14
30	1065+28.8	0.7' LT	SAN MH TA 4' DIA	T1 F, CL	603.15				595.72					595.72
31			NOT USED											
32	1067+17.5	16.6' RT	SAN MH TA 6' DIA	T1 F, CL	603.12			595.40				595.40	595.40	
33	1068+80.2	0.8' RT	SAN MH TA 4' DIA	T1 F, CL	602.30			595.64				595.64		
34	1070+01.9	25.2' LT	SAN MH TA 4' DIA	T1 F, CL	602.91			595.85				595.85		

SCHEDULE OF SANITARY SEWER PIPES

PIPE NUMBER	ITEM	CLASS	SIZE	LENGTH (FT)	SLOPE	TBF (SPECIAL) (CU YD)
27	SANS	B	10"	188.3	0.22%	129
28	NOT USED					
29	SANS	WM REQMTS	10"	193.0	0.17%	151
30	SANS	B	8"	27.0	7.56%	16
31	SANS	WM REQMTS	15"	161.6	0.15%	122
31A	SANS	B	15"	11.5	0.87%	4
32	SANS	WM REQMTS	15"	124.9	0.17%	87

RESILIENT CONNECTORS CONFORMING TO ASTM C-923 SHALL BE USED BETWEEN DRAINAGE AND SANITARY STRUCTURES AND PIPES.

REVISIONS	
NAME	DATE

ILLINOIS DEPARTMENT OF TRANSPORTATION
SANITARY SEWER PLAN
 SHERIDAN ROAD
 STATION 1063+00 TO STATION 1076+00

DATE 7/13/07
 DRAWN BY LTD
 CHECKED BY BJL

50' 0 50'
 HORIZ. 1"=50'

PLOT DATE = 7/12/2007
 FILE NAME = g:\cadd\83964\ss\wood\shwesta\sswp80.dwg
 PLOT SCALE = 80.0000 / 1"
 USER NAME = bjohnson

1051 PERIMETER DRIVE, SUITE 1025
 BLOOMINGHON, ILLINOIS 60173
 (847) 866-8800

