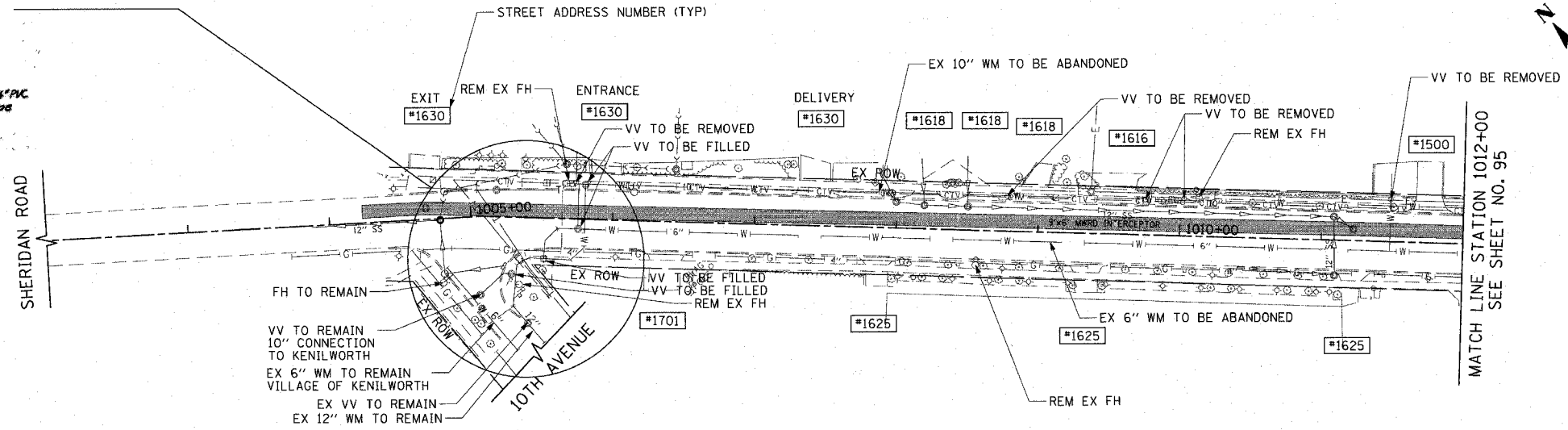
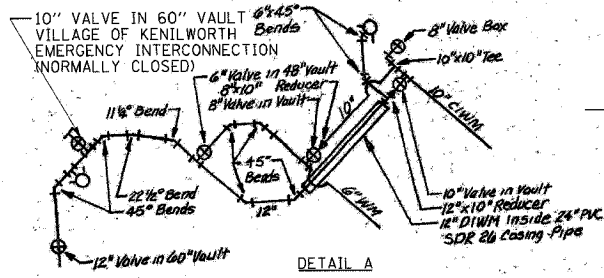


F.A.U. RTE.	SECTION	COUNTY	TOTAL SHEETS	SHEET NO.
3509	00-00173-00-FP	COOK	246	94
STA. 1002+00		TO STA. 1012+00		
FED. ROAD DIST. NO. 7		ILLINOIS FED. AID PROJECT		

PLOT DATE = 7/12/2007  
 FILE NAME = g:\cadd\83964\road\sheds\wmp\181.dwg  
 PLOT SCALE = 1/8"=1'-0"  
 USER NAME = bjohnson



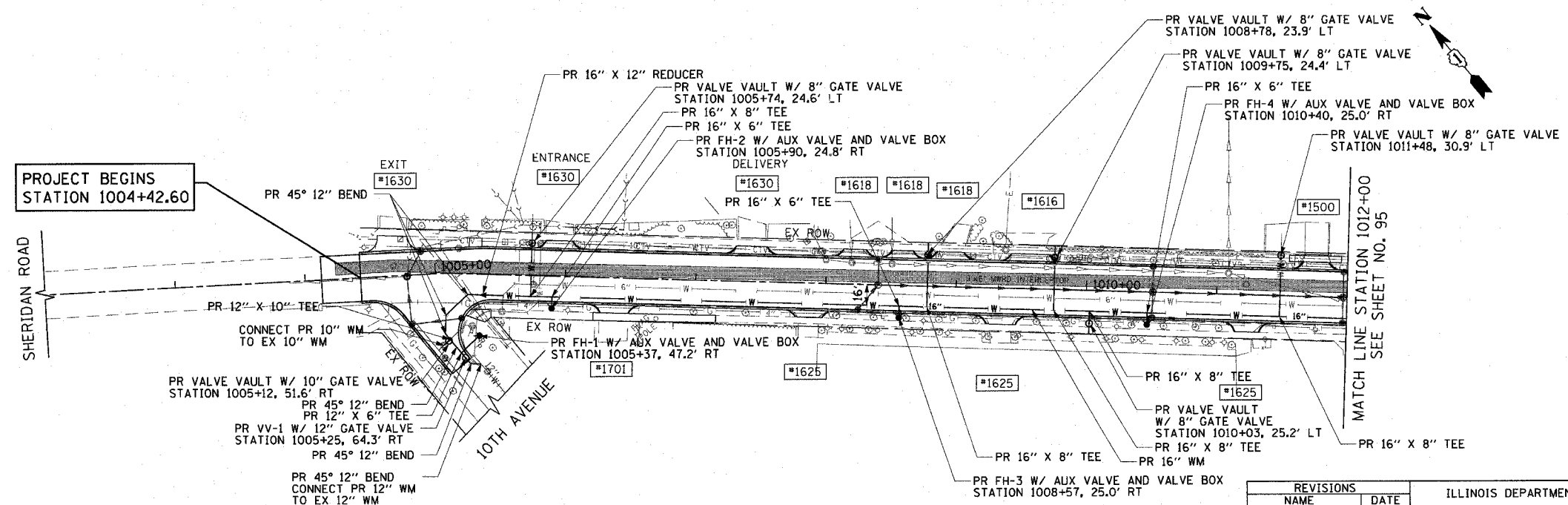
EXISTING

**NOTES:**

- SEE SHEET 180 FOR TYPICAL WATER SERVICE INSTALLATION DETAILS.
- ALL WATER SERVICES SHALL BE AUGURED UNLESS OTHERWISE DIRECTED BY THE ENGINEER. SEE SHEET 180 FOR PROPOSED BUFFALO BOX LOCATIONS.
- AT EACH SIDE STREET CONNECTION, 10' OF WATERMAIN REMOVAL IS REQUIRED. A QUANTITY FOR WATERMAIN REMOVAL OF THE SIZE SPECIFIED IS INCLUDED IN THE SUMMARY OF QUANTITIES.
- ALL WATERMAIN TO BE ABANDONED SHALL BE CAPPED AT EITHER END. THE COST OF THIS WORK IS INCLUDED IN THE COST OF WATERMAIN REMOVAL.
- ALL FITTINGS SHALL BE INCLUDED IN THE COST OF THE WATERMAIN OF THE SIZE SPECIFIED.
- WATER SERVICE REPLACEMENTS AT COMMERCIAL AND CONDO UNIT BUILDINGS SHALL OCCUR BETWEEN 12:00 MIDNIGHT AND 4:00 AM.
- A MINIMUM 10' HORIZONTAL SEPARATION SHALL BE PROVIDED BETWEEN WATER AND SANITARY SERVICES.

**LEGEND:**

PR VV-# = PROPOSED VALVE VAULT, TYPE A, 4'-DIAMETER, TYPE I FRAME, CLOSED LID



PROPOSED

REVISIONS	
NAME	DATE

ILLINOIS DEPARTMENT OF TRANSPORTATION  
**WATER MAIN PLAN**  
 SHERIDAN ROAD  
 STATION 1002+00 TO STATION 1012+00

DATE 7/13/07  
 DRAWN BY LTD  
 CHECKED BY BJL

