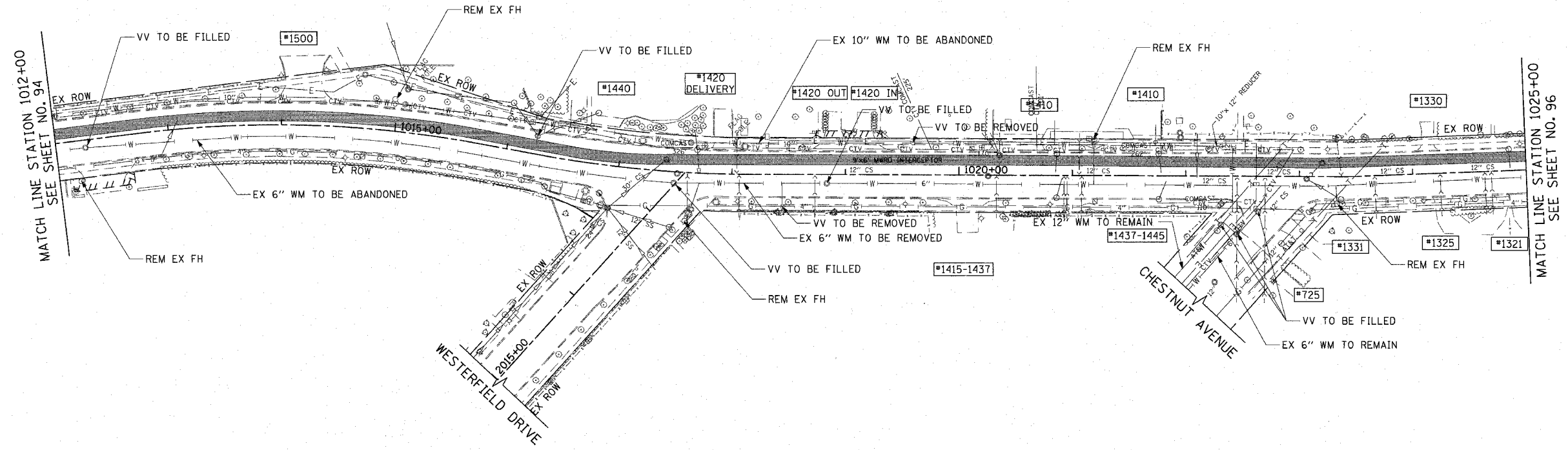


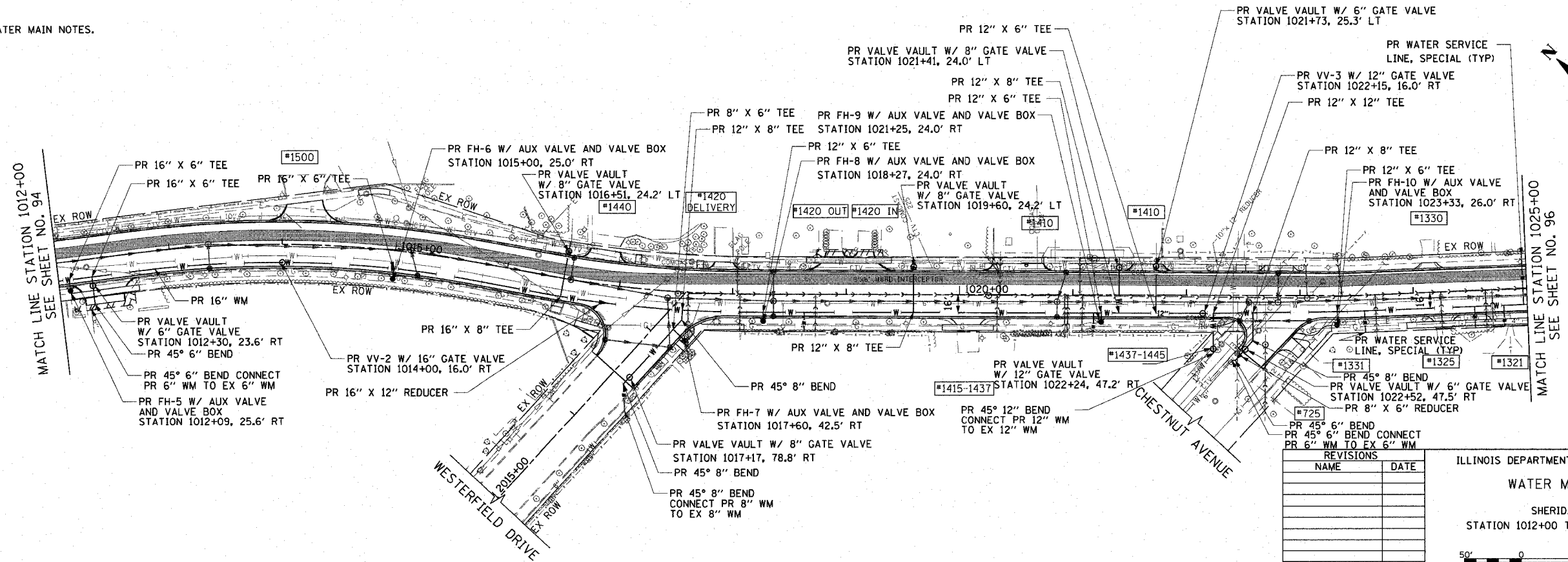
F.A.U. RTE.	SECTION	COUNTY	TOTAL SHEETS	SHEET NO.
3509	00-00173-00-FP	COOK	246	95
STA. 1012+00		TO STA. 1025+00		
FED. ROAD DIST. NO. 7		ILLINOIS FED. AID PROJECT		

PLOT DATE = 7/12/2007  
 FILE NAME = g:\cadd\83964\road\sheet\wmp102.dwg  
 USER NAME = bjozani



EXISTING

SEE SHEET NO. 94 FOR WATER MAIN NOTES.

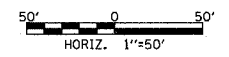


PROPOSED

REVISIONS	
NAME	DATE

ILLINOIS DEPARTMENT OF TRANSPORTATION  
**WATER MAIN PLAN**  
 SHERIDAN ROAD  
 STATION 1012+00 TO STATION 1025+00

DATE 7/13/07  
 DRAWN BY LTD  
 CHECKED BY B.JL



1051 PERIMETER DRIVE, SUITE 1025  
 SCHAMBERG, ILLINOIS 60173  
 (847) 865-9800

