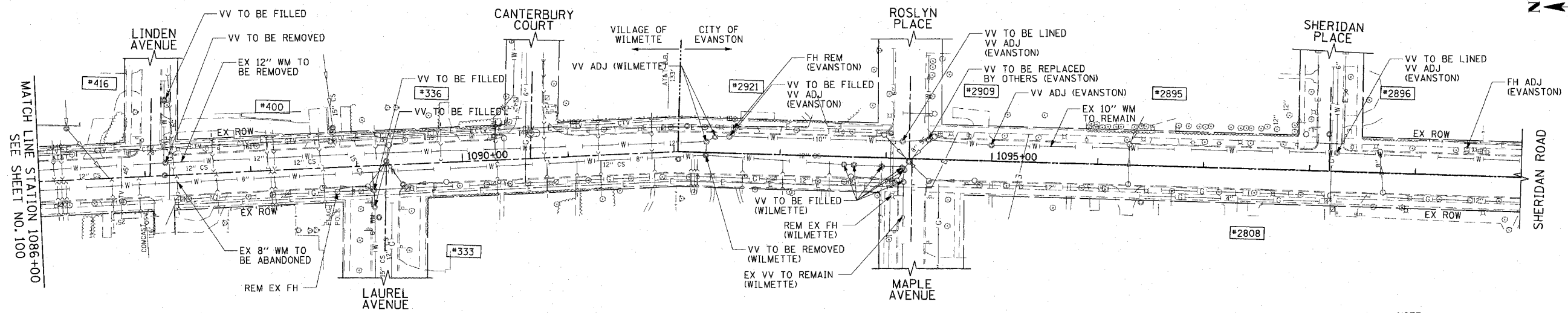


F.A.U. RTE.	SECTION	COUNTY	TOTAL SHEETS	SHEET NO.
3509	00-00173-00-FF	COOK	246	101
STA. 1086+00		TO STA. 1100+00		
FED. ROAD DIST. NO. 7		ILLINOIS FED. AID PROJECT		

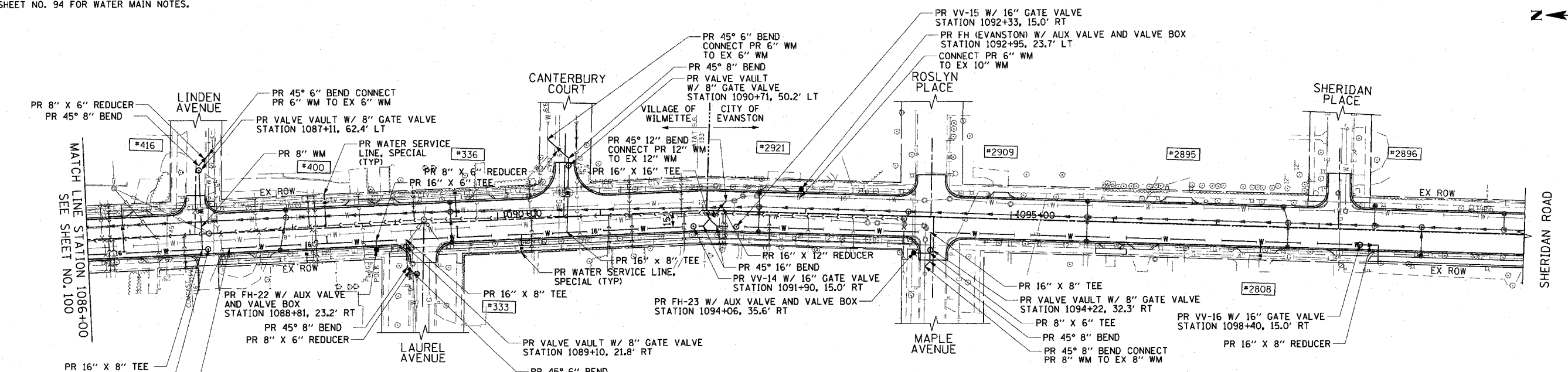
PLOT DATE = 7/12/2007
 FILE NAME = p:\cadd\83964\0005\wood\sheds\wmp1086.dwg
 PLOT SCALE = 50.0000' / 1" / IN.
 USER NAME = bjoelinen



NOTE:
 VV ADJ AND FH ADJ SOUTH OF SHERIDAN PLACE ARE CALLED OUT ON THE DRAINAGE & UTILITY PLAN SHEETS 61 - 63.

EXISTING

SEE SHEET NO. 94 FOR WATER MAIN NOTES.



PROPOSED

1051 PERIMETER DRIVE, SUITE 1025
 SCHAMBERG, ILLINOIS 60173
 (847) 605-9900



REVISIONS	
NAME	DATE

ILLINOIS DEPARTMENT OF TRANSPORTATION
WATER MAIN PLAN
 SHERIDAN ROAD
 STATION 1086+00 TO STATION 1100+00

DATE 7/13/07
 DRAWN BY LTD
 CHECKED BY B.J.L.

HORIZ. 1"=50'