

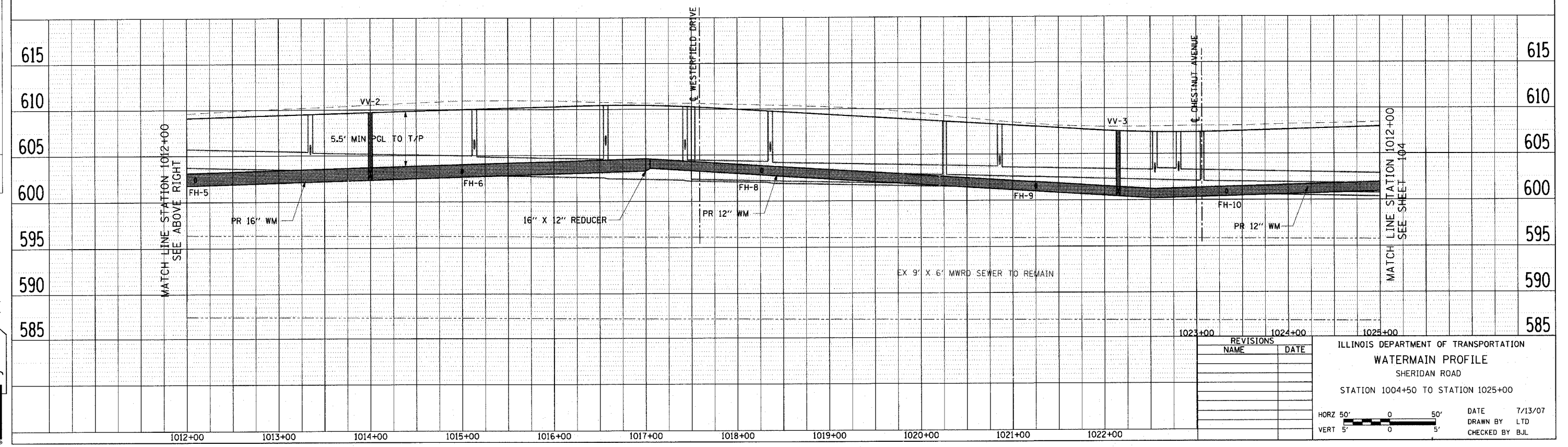
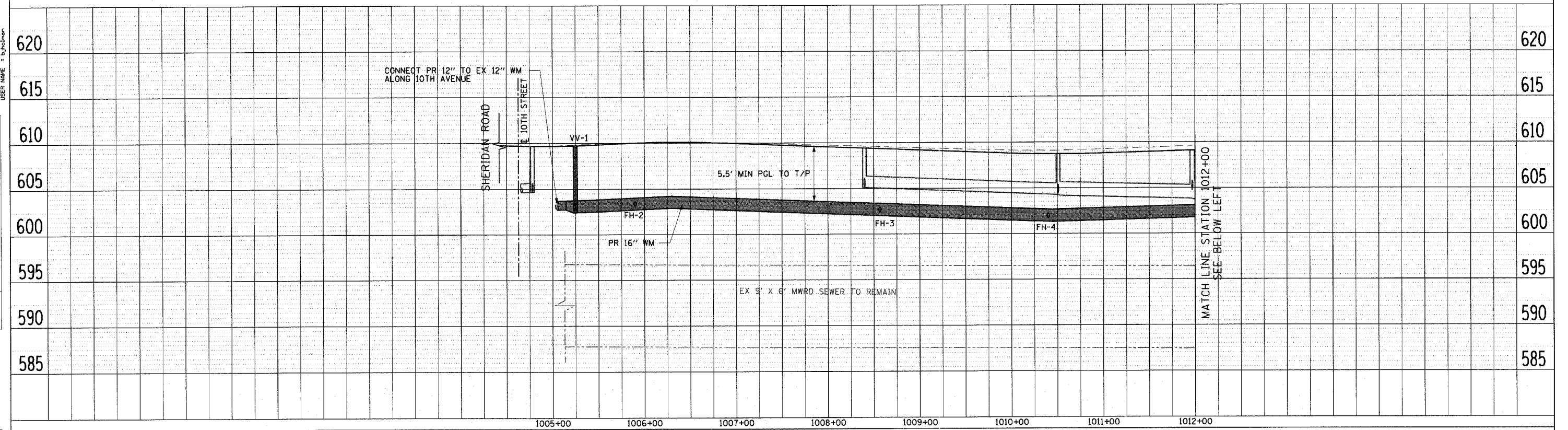
F.A.U. RTE.	SECTION	COUNTY	TOTAL SHEETS	SHEET NO.
3509	00-00173-00-FP	COOK	246	103
STA. 1004+50		TO STA. 1025+00		
FED. ROAD DIST. NO. 7		ILLINOIS FED. AID PROJECT		

PLOT DATE = 7/12/2007
 FILE NAME = g:\c065\0090\road\watermain\pr-dl.plt
 USER NAME = bjohnson

PLAN SURVEYED BY DATE
 ALIGNED CHECKED BY DATE
 PLOTTED BY DATE
 DATE

PROFILE SURVEYED BY DATE
 GRADE CHECKED BY DATE
 STRUCTURE NOTATIONS C/P/D
 DATE

1051 PERIMETER DRIVE, SUITE 1026
 SCHAMBERG, ILLINOIS 60173
 (647) 905-9000



REVISIONS	
NAME	DATE

ILLINOIS DEPARTMENT OF TRANSPORTATION
WATERMAIN PROFILE
 SHERIDAN ROAD
 STATION 1004+50 TO STATION 1025+00

DATE 7/13/07
 DRAWN BY LTD
 CHECKED BY BJL

HORZ 50' 0 50'
 VERT 5' 0 5'