

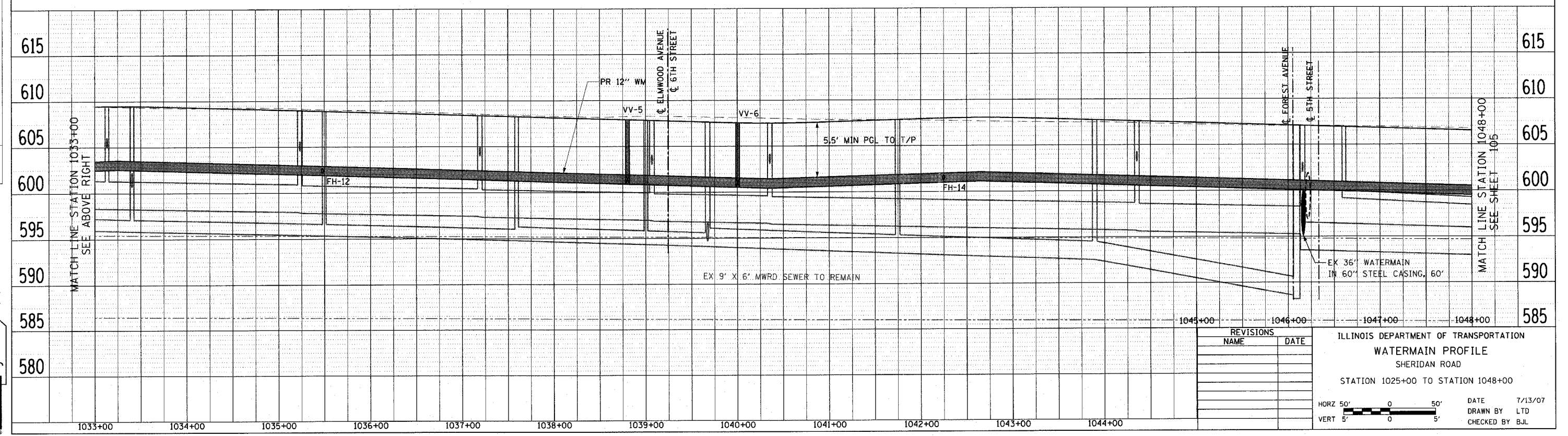
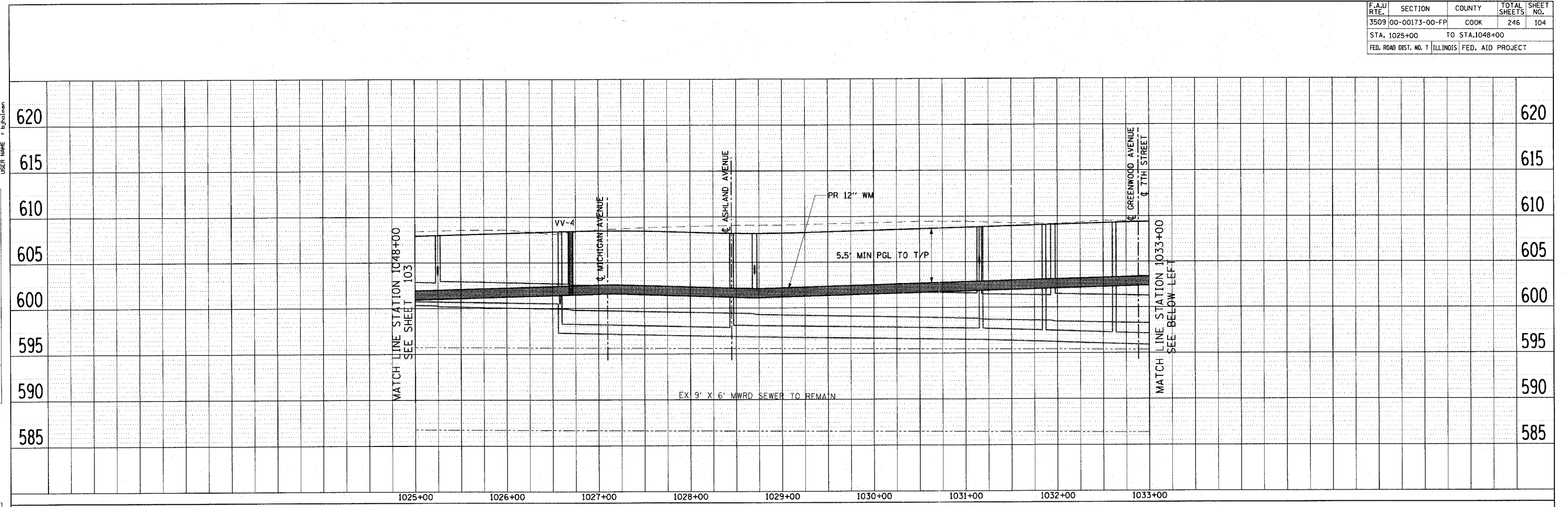
F.A.U. RTE.	SECTION	COUNTY	TOTAL SHEETS	SHEET NO.
3509	00-00173-00-FP	COOK	246	104
STA. 1025+00		TO STA. 1048+00		
FED. ROAD DIST. NO. 7		ILLINOIS FED. AID PROJECT		

PLOT DATE = 7/12/2007  
 FILE NAME = g:\cadd\0802\road\shesha\wp02.plt  
 USER NAME = EJohnson

PLAN	SURVEYED	DATE
NOTE BOOK NO.	BY	
NO.	DATE	

PROFILE	SURVEYED	DATE
NOTE BOOK NO.	BY	
NO.	DATE	

1051 PERIMETER DRIVE, SUITE 1025  
 SCHAUMBURG, ILLINOIS 60173  
 (847) 965-9800



REVISIONS	
NAME	DATE

ILLINOIS DEPARTMENT OF TRANSPORTATION  
**WATERMAIN PROFILE**  
 SHERIDAN ROAD  
 STATION 1025+00 TO STATION 1048+00

DATE 7/13/07  
 DRAWN BY LTD  
 CHECKED BY BJL

HORZ 50' 0 50'  
 VERT 5' 0 5'