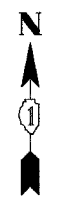
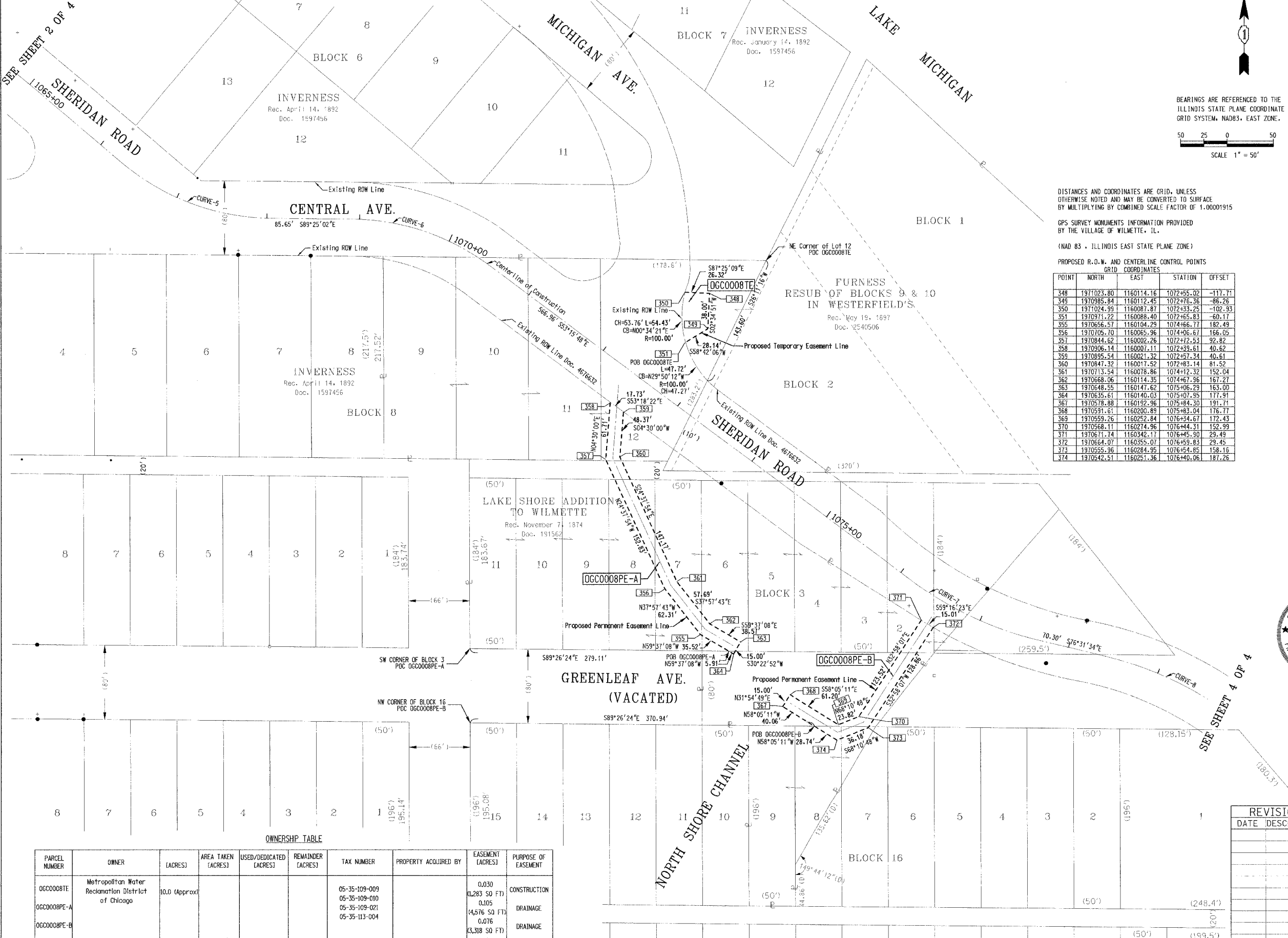
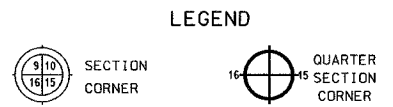


Part of NW 1/4 Section 35, Township 42 North, Range 13 East of the Third Principal Meridian, Cook Co.



BEARINGS ARE REFERENCED TO THE ILLINOIS STATE PLANE COORDINATE GRID SYSTEM, NAD83, EAST ZONE.  
SCALE 1" = 50'



DISTANCES AND COORDINATES ARE GRID, UNLESS OTHERWISE NOTED AND MAY BE CONVERTED TO SURFACE BY MULTIPLYING BY COMBINED SCALE FACTOR OF 1.00001915  
GPS SURVEY MONUMENTS INFORMATION PROVIDED BY THE VILLAGE OF WILMETTE, IL.  
(NAD 83 - ILLINOIS EAST STATE PLANE ZONE)

PROPOSED R.O.W. AND CENTERLINE CONTROL POINTS GRID COORDINATES

POINT	NORTH	EAST	STATION	OFFSET
348	1971023.80	1160114.16	1072+55.02	-117.71
349	1970985.84	1160112.45	1072+76.36	-86.26
350	1971024.99	1160087.87	1072+33.25	-102.93
351	1970971.22	1160088.40	1072+65.83	-60.17
355	1970656.57	1160104.29	1074+66.77	182.49
356	1970705.70	1160065.96	1074+06.67	166.05
357	1970844.62	1160002.26	1072+72.53	92.82
358	1970906.14	1160007.11	1072+39.61	40.62
359	1970895.54	1160021.32	1072+57.34	40.61
360	1970847.32	1160017.52	1072+83.14	81.52
361	1970713.54	1160078.86	1074+12.32	152.04
362	1970668.06	1160114.35	1074+61.96	161.27
363	1970648.55	1160147.62	1075+06.29	163.00
364	1970635.61	1160140.03	1075+07.95	177.91
367	1970578.88	1160192.96	1075+84.30	191.71
368	1970591.61	1160200.89	1075+83.04	176.77
369	1970559.26	1160252.84	1076+34.67	172.43
370	1970568.11	1160274.96	1076+44.31	152.99
371	1970671.74	1160342.17	1076+45.90	29.49
372	1970664.07	1160355.07	1076+59.83	29.45
373	1970555.96	1160284.95	1076+54.85	158.16
374	1970542.51	1160251.36	1076+40.06	187.26

THIS IS TO CERTIFY THAT I, BEN B. POCHYLA, AN ILLINOIS PROFESSIONAL LAND SURVEYOR, HAVE SURVEYED THE PLAT OF HIGHWAYS SHOWN HEREON BETWEEN SECTIONS 27, 35 TOWNSHIP 42 NORTH, RANGE 13 EAST, AND SECTIONS 27, 35 TOWNSHIP 42 NORTH, RANGE 13 EAST, OF THE THIRD PRINCIPAL MERIDIAN, COOK COUNTY; THAT THE SURVEY IS TRUE AND COMPLETE AS SHOWN TO THE BEST OF MY KNOWLEDGE AND BELIEF; THAT THE PLAT CORRECTLY REPRESENTS SAID SURVEY, THAT ALL MONUMENTS FOUND AND ESTABLISHED ARE OF PERMANENT QUALITY AND OCCUPY THE POSITIONS SHOWN HEREON AND THE MONUMENTS ARE SUFFICIENT TO ENABLE THE SURVEY TO BE RETRACED. MADE FOR THE DEPARTMENT OF TRANSPORTATION, STATE OF ILLINOIS.

DATED AT SCHAMBURG ILLINOIS THIS 15th DAY OF May 2007 A.D.

BEN B. POCHYLA  
ILLINOIS PROFESSIONAL LAND SURVEYOR NO. 3139

TranSystems  
1051 Parimeter Drive, Suite 1025  
Schumburg, IL 60173  
(847) 605-9600 (847) 605-9610 FAX

OWNERSHIP TABLE

PARCEL NUMBER	OWNER	ACRES	AREA TAKEN (ACRES)	USED/DEDICATED (ACRES)	REMAINDER (ACRES)	TAX NUMBER	PROPERTY ACQUIRED BY	EASEMENT (ACRES)	PURPOSE OF EASEMENT
0G00008TE	Metropolitan Water Reclamation District of Chicago	10.0 (Approx)				05-35-109-009		0.030	CONSTRUCTION
0G00008PE-A						05-35-109-010		1,283 (50 FT)	DRAINAGE
0G00008PE-B						05-35-109-021		4,576 (50 FT)	DRAINAGE
						05-35-113-004		0.076	DRAINAGE
								3,318 (50 FT)	DRAINAGE

ILLINOIS DEPT. OF TRANSPORTATION  
PLAT OF HIGHWAYS

ROUTE SHERIDAN ROAD  
SECTION 00-00173-00FP  
COUNTY COOK  
JOB# R-90-010-06 PROJECT#  
SEC 27 T 42, R 13 OF 3RD P.M.  
STA 1065+00 TO STA 1075+00  
DRAWN TSC CHECKED BBP  
SCALE: 1" = 50' SHEET NO. 3 OF 4

REVISION	DATE	DESCRIPTION