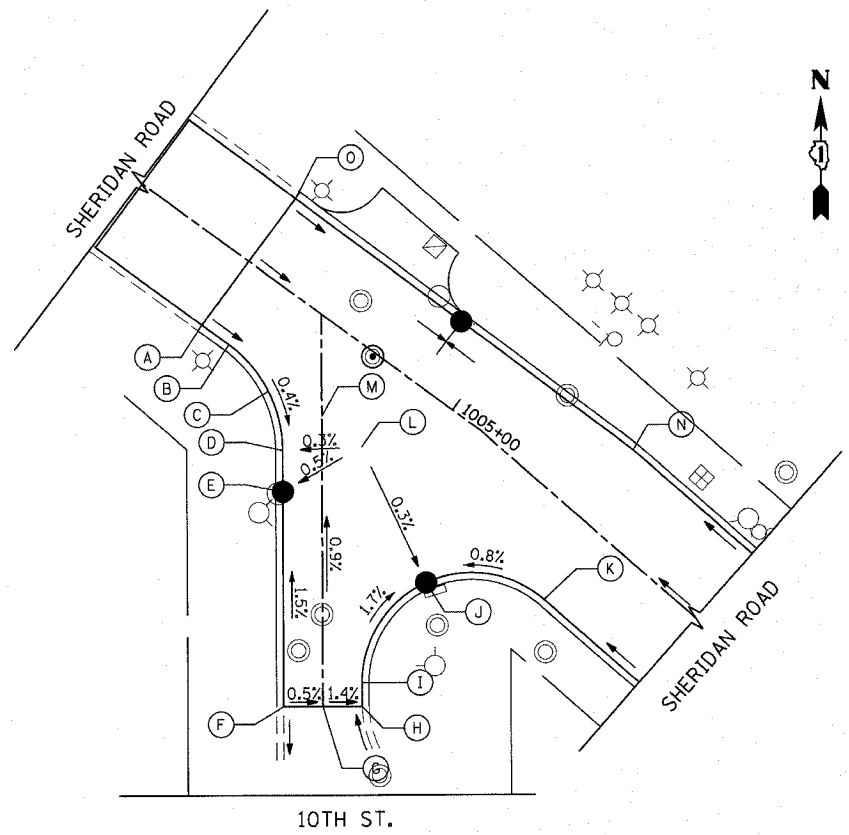
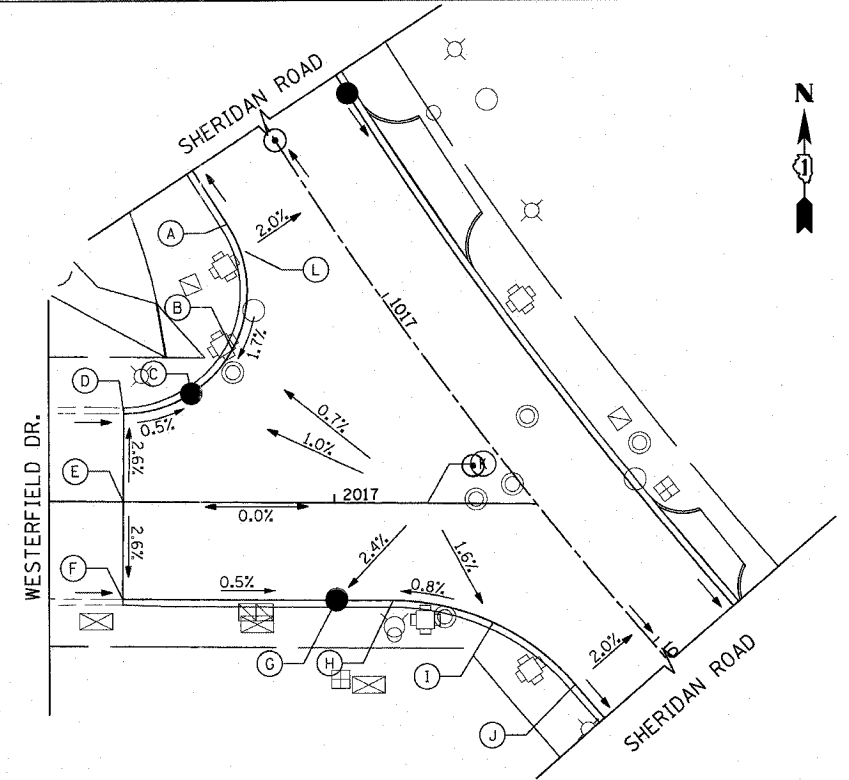


PLOT DATE = 7/12/2007
 USER NAME = b.j.holman



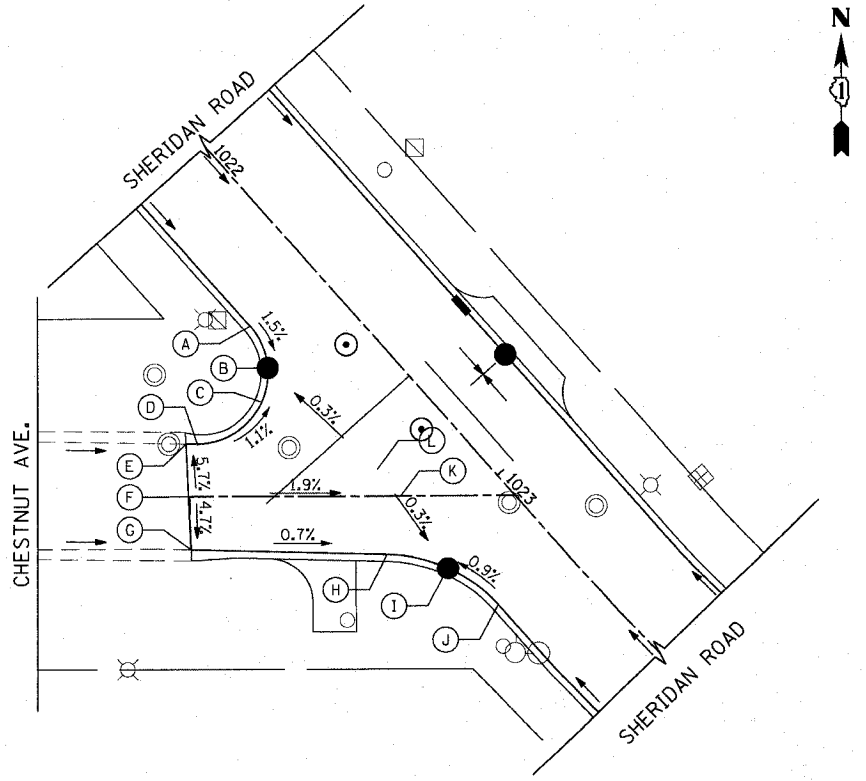
	STATION	OFFSET	ELEVATION
A	1004+42.60	18.08' RT	609.37 (ME)
B	1004+50.22	18.09' RT	609.34
C	1004+63.70	21.30' RT	609.29
D	1004+74.30	30.24' RT	609.24
E	1004+79.86	37.79' RT	609.20
F	1005+15.39	76.75' RT	609.92 (ME)
G	1005+22.09	70.88' RT	609.88 (ME)
H	1005+28.78	65.00' RT	609.76 (ME)
I	1005+25.26	60.99' RT	609.67
J	1005+21.28	34.18' RT	609.19
K	1005+44.05	19.50' RT	609.41
L	1004+88.31	19.89' RT	609.29
M	1004+77.45	19.51' RT	609.30
N	1005+37.01	19.50' LT	609.38
O	1004+42.60	17.88' LT	609.39 (ME)



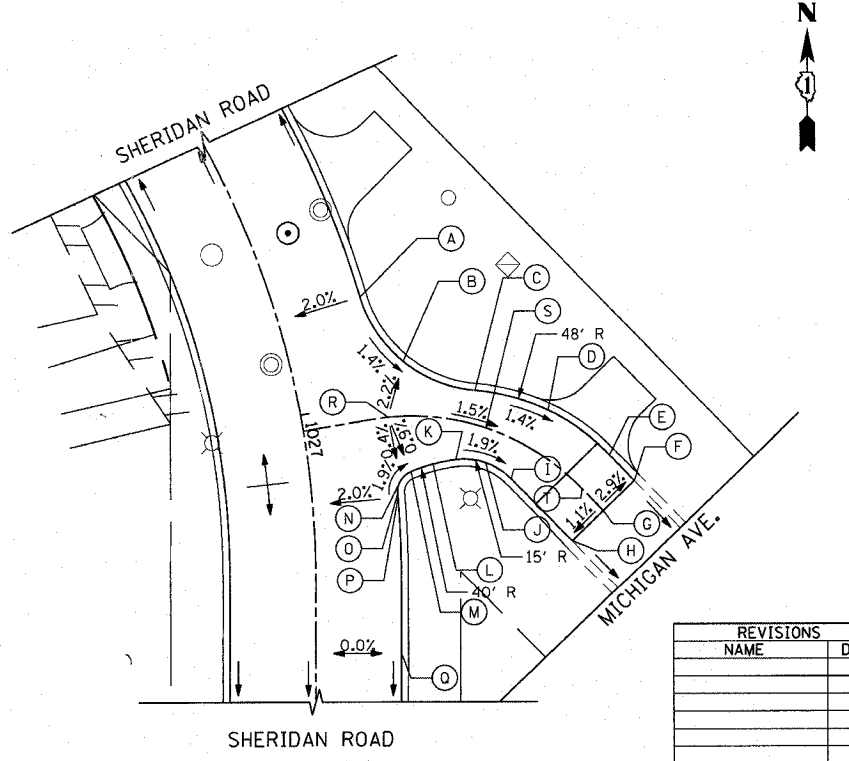
	STATION	OFFSET	ELEVATION
A	1016+66.56	19.50' RT	610.80
B	1016+90.45	34.57' RT	610.30
C	1016+93.18	48.00' RT	610.07
D	1016+88.52	63.27' RT	610.15 (ME)
E	1017+04.54	75.42' RT	610.69 (ME)
F	1017+20.20	87.84' RT	610.14 (ME)
G	1017+47.99	49.31' RT	609.90
H	1017+55.54	39.23' RT	610.01
I	1017+73.23	24.70' RT	610.20
J	1017+95.55	19.50' RT	610.40
K	1017+43.46	19.50' RT	610.68
L	1016+73.28	19.50' RT	610.84

ME = MATCH EXISTING

1051 PERIMETER DRIVE, SUITE 1025
 SCHAUMBURG, ILLINOIS 60173
 (847) 605-9800



	STATION	OFFSET	ELEVATION
A	1022+37.36	19.50' RT	607.01
B	1022+47.08	22.79' RT	606.85
C	1022+51.97	28.98' RT	606.94
D	1022+49.27	46.18' RT	607.17
E	1022+47.57	48.08' RT	607.18 (ME)
F	1022+57.13	55.34' RT	607.86 (ME)
G	1022+66.24	63.11' RT	607.30 (ME)
H	1022+96.69	30.62' RT	606.97
I	1023+08.32	22.40' RT	606.87
J	1023+22.27	19.50' RT	607.00
K	1022+88.86	19.50' RT	606.95
L	1022+80.79	19.50' RT	606.95



	STATION	OFFSET	ELEVATION
A	1026+78.09	19.50' LT	608.84
B	1026+93.12	25.32' LT	608.59
C	1027+01.48	40.08' LT	608.34
D	1027+07.28	55.75' LT	608.10
E	1027+16.32	68.33' LT	607.86
F	1027+21.00	73.42' LT	607.75 (ME)
G	1027+25.72	65.90' LT	608.03 (ME)
H	1027+30.72	58.52' LT	607.92 (ME)
I	1027+18.78	45.41' LT	608.30
J	1027+15.30	40.13' LT	608.43
K	1027+14.06	33.45' LT	608.56
L	1027+14.42	28.20' LT	608.66
M	1027+15.42	23.06' LT	608.76
N	1027+17.01	20.49' LT	608.82
O	1027+19.70	19.50' LT	608.88
P	1027+20.55	19.50' LT	608.88
Q	1027+54.56	19.50' LT	608.42
R	1027+03.83	19.50' LT	608.88
S	1027+08.85	41.11' LT	608.54
T	1027+21.69	61.43' LT	608.14

REVISIONS	
NAME	DATE

ILLINOIS DEPARTMENT OF TRANSPORTATION
INTERSECTION DETAILS
 SHERIDAN ROAD

DATE 7/13/07
 DRAWN BY LTD
 CHECKED BY BJL

HORIZ. 1"=20'