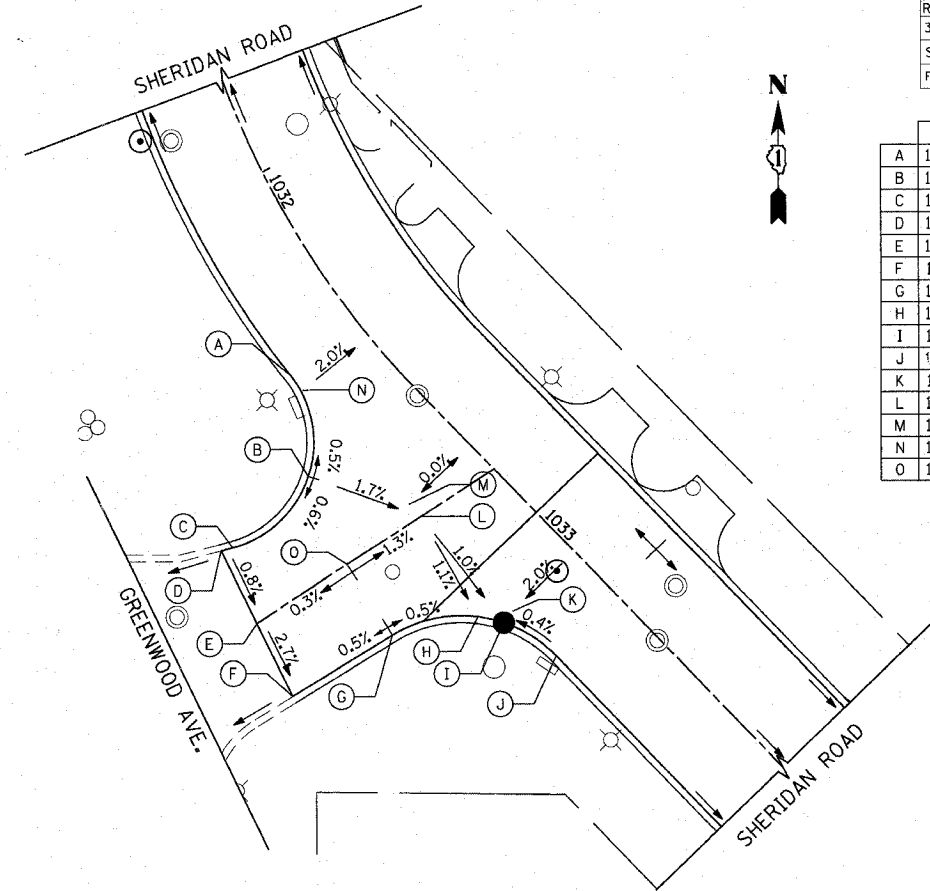
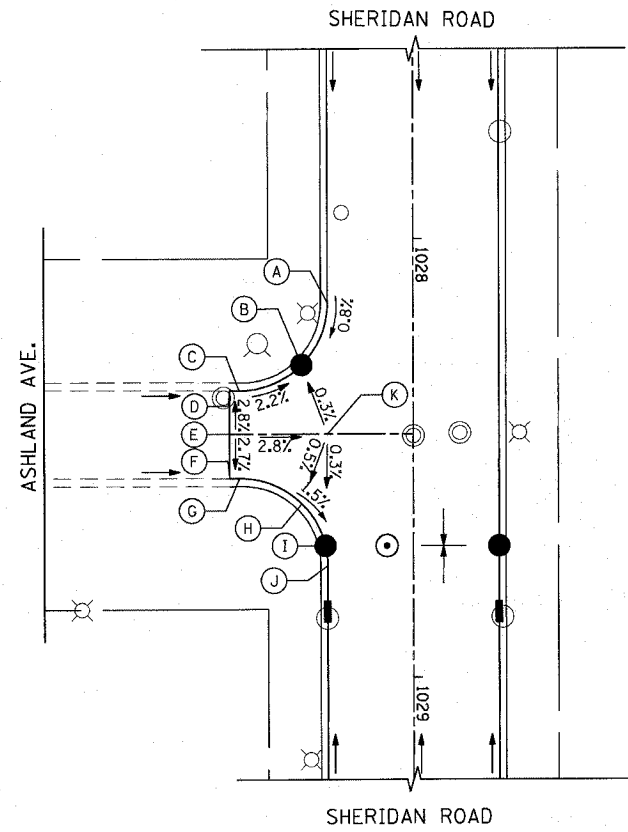


| F.A.U. RTE. | SECTION | COUNTY | TOTAL SHEETS | SHEET NO. |
|-----------------------|----------------|---------------------------|--------------|-----------|
| 3509 | 00-00173-00-FP | COOK | 246 | 113 |
| STA. | | TO STA. | | |
| FED. ROAD DIST. NO. 7 | | ILLINOIS FED. AID PROJECT | | |

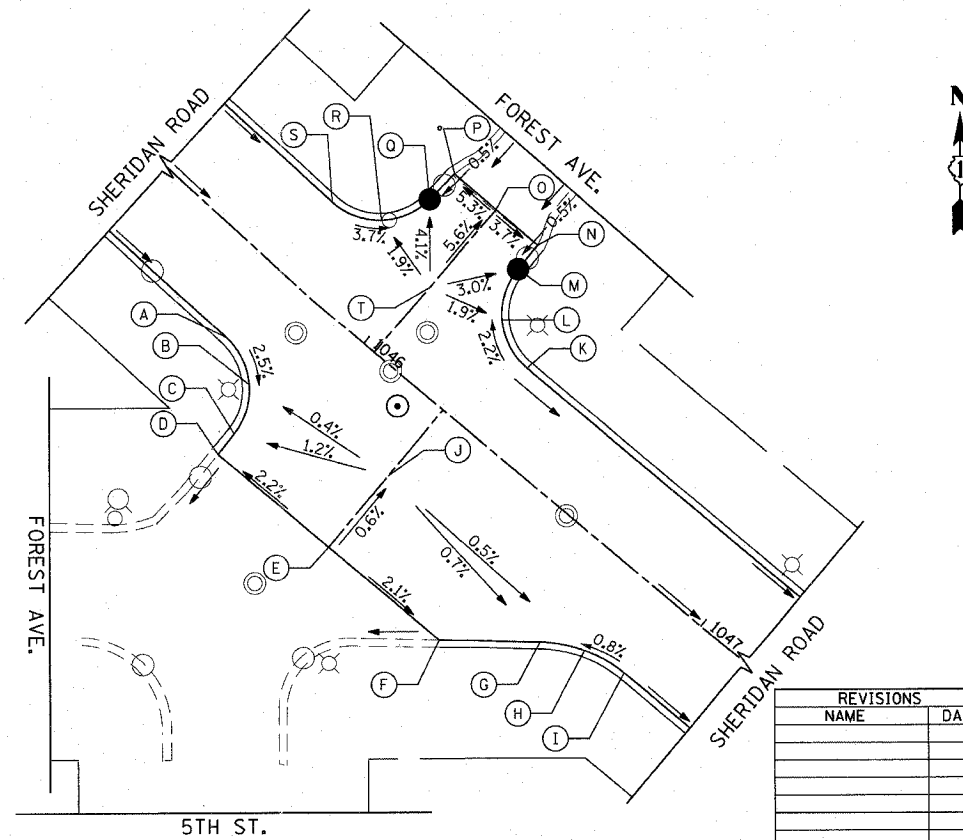
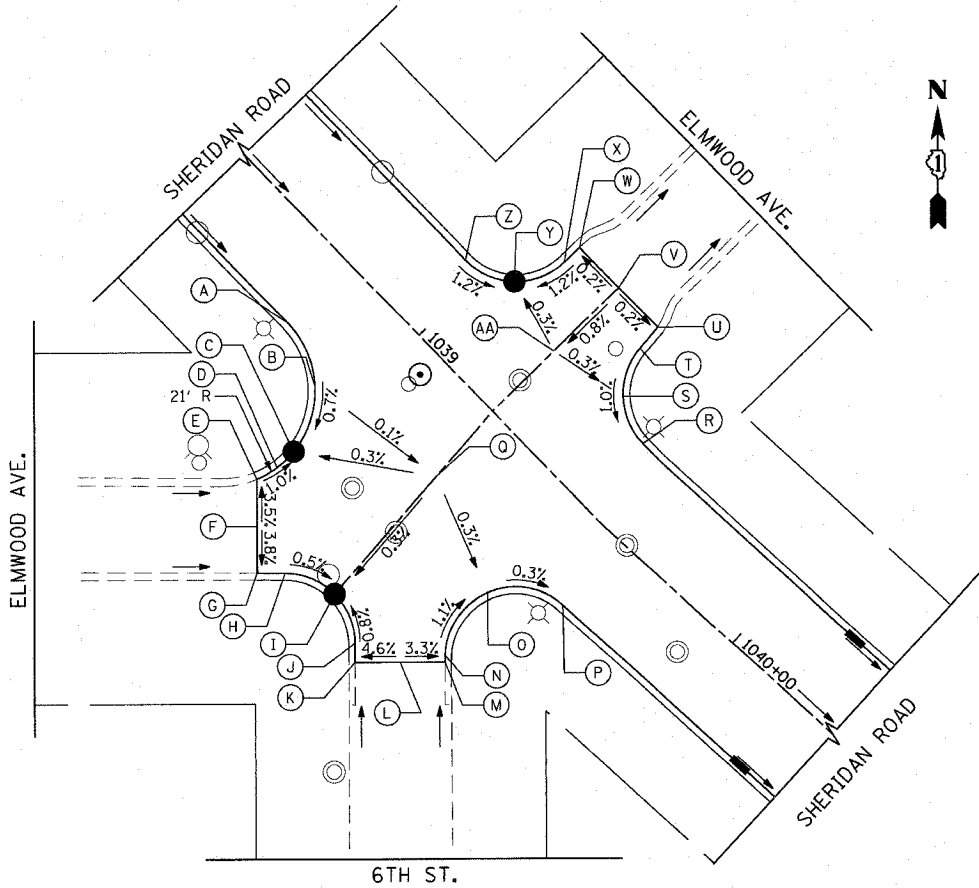
| STATION | OFFSET | ELEVATION |
|---------|------------|-----------------------|
| A | 1028+14.61 | 19.50' RT 607.88 |
| B | 1028+28.79 | 25.40' RT 607.76 |
| C | 1028+34.61 | 39.60' RT 608.10 |
| D | 1028+34.59 | 41.81' RT 608.15 (ME) |
| E | 1028+44.65 | 41.79' RT 608.43 (ME) |
| F | 1028+54.71 | 41.78' RT 608.16 (ME) |
| G | 1028+54.71 | 39.51' RT 608.13 |
| H | 1028+60.56 | 25.36' RT 607.89 |
| I | 1028+70.18 | 20.02' RT 607.73 |
| J | 1028+74.71 | 19.50' RT 607.79 |
| K | 1028+44.65 | 19.50' RT 607.81 |



| STATION | OFFSET | ELEVATION |
|---------|------------|-----------------------|
| A | 1032+40.42 | 19.50' RT 609.61 |
| B | 1032+58.50 | 31.61' RT 609.74 |
| C | 1032+58.58 | 55.27' RT 609.61 |
| D | 1032+57.57 | 57.71' RT 609.59 (ME) |
| E | 1032+74.06 | 63.32' RT 609.45 (ME) |
| F | 1032+91.64 | 68.98' RT 608.96 (ME) |
| G | 1032+97.42 | 42.99' RT 609.09 |
| H | 1033+07.93 | 26.10' RT 608.98 |
| I | 1033+13.00 | 22.81' RT 608.95 |
| J | 1033+26.70 | 19.50' RT 609.01 |
| K | 1033+12.54 | 19.50' RT 609.00 |
| L | 1032+82.45 | 19.50' RT 609.27 |
| M | 1032+78.54 | 19.50' RT 609.31 |
| N | 1032+44.54 | 19.50' RT 609.62 |
| O | 1032+78.75 | 38.84' RT 609.52 |

ME = MATCH EXISTING

| STATION | OFFSET | ELEVATION |
|---------|------------|-----------------------|
| A | 1038+77.28 | 19.50' RT 607.42 |
| B | 1038+91.84 | 25.01' RT 607.31 |
| C | 1038+99.11 | 38.79' RT 607.26 |
| D | 1038+99.11 | 44.05' RT 607.26 |
| E | 1038+97.83 | 49.15' RT 607.31 (ME) |
| F | 1039+05.53 | 56.55' RT 607.68 (ME) |
| G | 1039+13.22 | 63.95' RT 607.28 (ME) |
| H | 1039+17.66 | 59.41' RT 607.25 |
| I | 1039+28.86 | 54.58' RT 607.18 |
| J | 1039+40.20 | 59.05' RT 607.28 |
| K | 1039+43.46 | 62.18' RT 607.31 (ME) |
| L | 1039+50.54 | 54.82' RT 607.78 (ME) |
| M | 1039+57.61 | 47.46' RT 607.44 (ME) |
| N | 1039+56.51 | 46.35' RT 607.43 |
| O | 1039+52.85 | 29.38' RT 607.21 |
| P | 1039+65.59 | 19.50' RT 607.16 |
| Q | 1039+22.07 | 19.50' RT 607.29 |
| R | 1039+53.06 | 19.50' LT 607.20 |
| S | 1039+42.29 | 23.66' LT 607.23 |
| T | 1039+37.13 | 33.98' LT 607.37 |
| U | 1039+36.54 | 40.22' LT 607.42 (ME) |
| V | 1039+23.81 | 40.15' LT 607.45 (ME) |
| W | 1039+11.09 | 40.07' LT 607.43 (ME) |
| X | 1039+11.03 | 35.32' LT 607.40 |
| Y | 1039+06.28 | 24.12' LT 607.22 |
| Z | 1038+95.04 | 19.50' LT 607.37 |
| AA | 1039+23.93 | 19.50' LT 607.28 |



| STATION | OFFSET | ELEVATION |
|---------|------------|-----------------------|
| A | 1045+75.98 | 19.50' RT 606.71 |
| B | 1045+86.05 | 23.84' RT 606.41 |
| C | 1045+90.53 | 34.68' RT 606.11 |
| D | 1045+90.66 | 40.55' RT 605.97 (ME) |
| E | 1046+23.53 | 40.55' RT 606.69 (ME) |
| F | 1046+56.40 | 40.55' RT 606.00 (ME) |
| G | 1046+74.29 | 26.27' RT 606.18 |
| H | 1046+83.38 | 21.24' RT 606.27 |
| I | 1046+93.63 | 19.50' RT 606.35 |
| J | 1046+23.53 | 19.50' RT 606.56 |
| K | 1046+32.12 | 19.50' LT 606.54 |
| L | 1046+20.83 | 24.16' LT 606.27 |
| M | 1046+16.12 | 35.44' LT 606.00 |
| N | 1046+16.09 | 42.41' LT 606.03 (ME) |
| O | 1046+03.62 | 42.56' LT 606.49 (ME) |
| P | 1045+91.15 | 42.72' LT 605.83 (ME) |
| Q | 1045+90.49 | 34.69' LT 605.80 |
| R | 1046+84.15 | 23.96' LT 606.26 |
| S | 1045+73.07 | 19.50' LT 606.71 |
| T | 1046+03.34 | 19.50' LT 606.62 |

| REVISIONS | NAME | DATE |
|-----------|------|------|
| | | |
| | | |
| | | |
| | | |
| | | |
| | | |
| | | |
| | | |
| | | |
| | | |
| | | |

ILLINOIS DEPARTMENT OF TRANSPORTATION
 INTERSECTION DETAILS
 SHERIDAN ROAD

DATE 7/13/07
 DRAWN BY LTD
 CHECKED BY BJL

20' 0 20'
 HORIZ. 1"=20'

PLOT DATE = 7/12/2007
 FILE NAME = g:\a065\0005\work\sherdans\intersections2.dwg
 USER NAME = bjozmen

1051 PERIMETER DRIVE, SUITE 1025
 SCHALBURG, ILLINOIS 60175
 (847) 865-8600

