

F.A.U. RTE.	SECTION	COUNTY	TOTAL SHEETS	SHEET NO.
3509	00-00173-00-FP	COOK	246	114
STA.		TO STA.		
FED. ROAD DIST. NO. 7		ILLINOIS FED. AID PROJECT		

STATION	OFFSET	ELEVATION
A	1058+97.48	19.50' RT 603.46
B	1059+19.17	24.93' RT 603.57
C	1059+65.74	39.92' RT 603.68
D	1059+39.29	46.30' RT 603.72 (ME)
E	1059+62.30	47.64' RT 604.42 (ME)
F	1059+81.33	48.75' RT 604.31 (ME)
G	1059+81.38	48.11' RT 604.28
H	1059+91.23	27.75' RT 603.18
I	1060+12.14	19.50' RT 603.11
J	1059+62.05	19.50' RT 603.26

STATION	OFFSET	ELEVATION
K	1061+20.73	19.50' LT 602.79
L	1061+09.69	23.92' LT 602.82
M	1061+04.75	34.73' LT 603.00
N	1061+04.51	38.63' LT 603.06 (ME)
O	1060+92.23	38.55' LT 603.81 (ME)
P	1060+79.89	38.46' LT 603.02 (ME)
Q	1060+79.64	34.47' LT 602.92
R	1060+74.61	23.83' LT 602.82
S	1060+63.67	19.50' LT 602.96
T	1060+92.36	19.50' LT 602.87

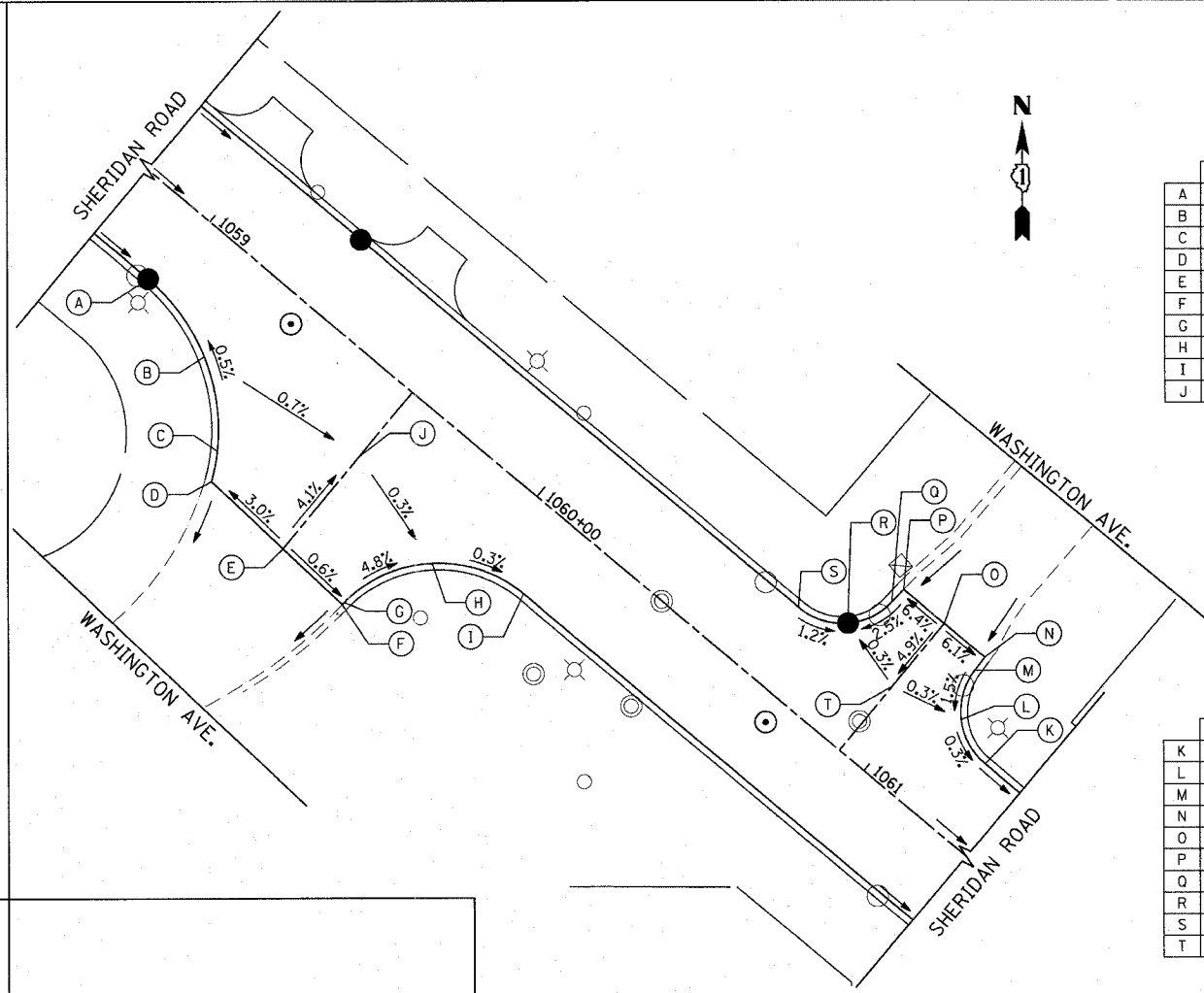
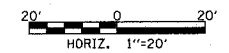
ME = MATCH EXISTING

STATION	OFFSET	ELEVATION
A	1065+28.83	19.50' RT 602.75
B	1065+47.71	22.84' RT 602.50
C	1065+64.29	32.46' RT 602.25 (ME)
D	1065+96.86	32.46' RT 603.10 (ME)
E	1066+29.42	32.46' RT 603.32 (ME)
F	1066+40.71	22.92' RT 603.35
G	1066+54.84	19.50' RT 603.37
H	1066+47.12	19.50' RT 603.40
I	1066+13.12	19.50' RT 603.11
J	1065+96.86	19.50' RT 602.96
K	1065+79.12	19.50' RT 602.79
L	1066+56.23	19.50' RT 603.36
M	1066+61.94	21.72' RT 603.23
N	1066+87.87	48.71' RT 602.48
O	1066+92.68	49.71' RT 602.36
P	1067+20.75	36.07' RT 602.66
Q	1067+00.00	19.50' RT 603.23

REVISIONS	
NAME	DATE

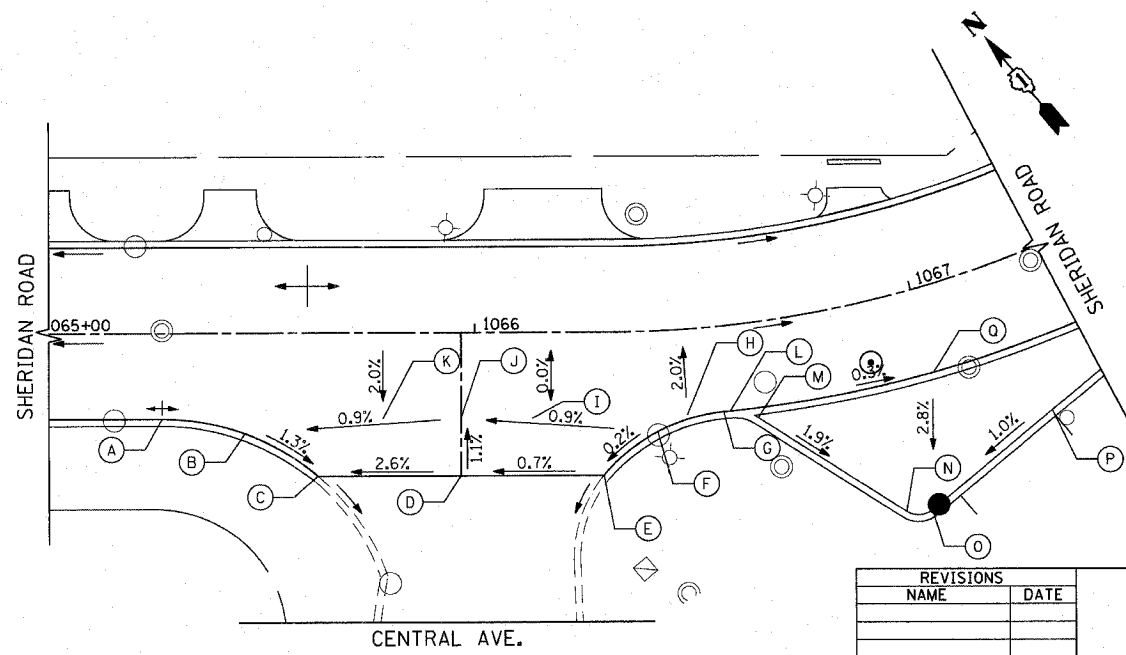
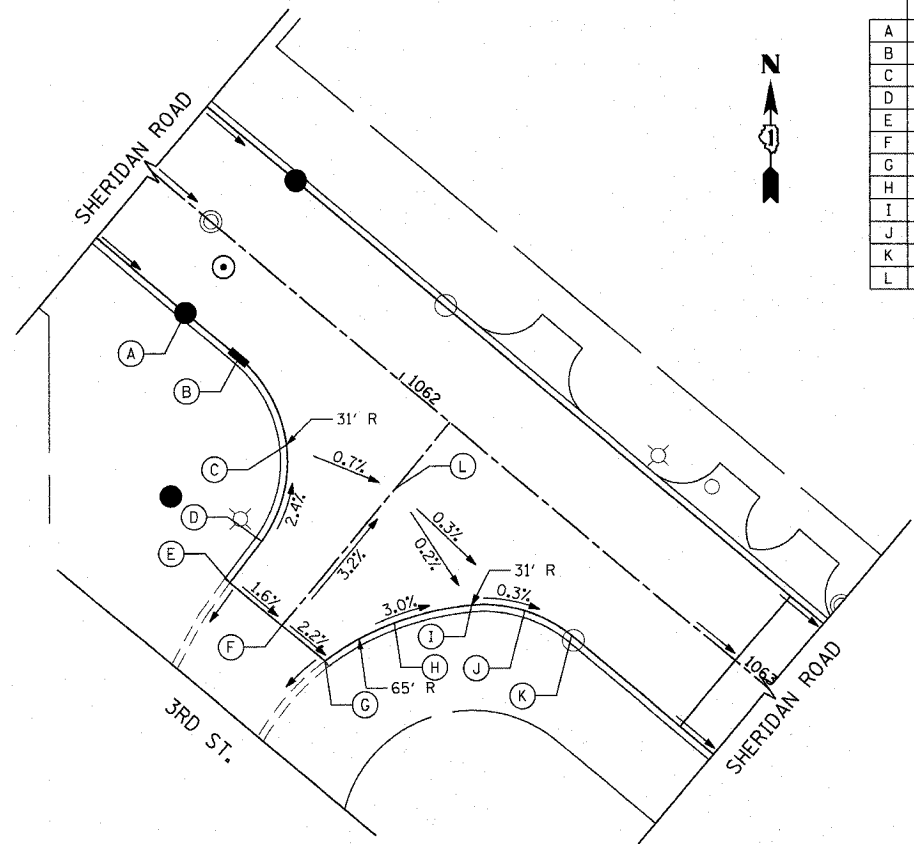
ILLINOIS DEPARTMENT OF TRANSPORTATION  
**INTERSECTION DETAILS**  
 SHERIDAN ROAD

DATE 7/13/07  
 DRAWN BY LTD  
 CHECKED BY BJL



SEE SHEET 117 FOR LAKE AVE INTERSECTION DETAIL

STATION	OFFSET	ELEVATION
A	1061+53.00	19.50' RT 602.69
B	1061+68.88	19.50' RT 602.64
C	1061+89.95	27.76' RT 603.19
D	1061+99.79	48.15' RT 603.75
E	1062+00.29	60.00' RT 604.03 (ME)
F	1062+15.72	60.00' RT 603.79 (ME)
G	1062+28.56	60.00' RT 603.51 (ME)
H	1062+34.97	43.13' RT 603.16
I	1062+45.78	28.67' RT 602.43
J	1062+55.87	21.88' RT 602.39
K	1062+67.79	19.50' RT 602.35
L	1062+15.34	19.50' RT 602.50



PLT DATE = 7/12/2007  
 FILE NAME = g:\cadd\83964\road\sherdan\intersection\3rd.st  
 PLOT SCALE = 28.0000 / IN.  
 USER NAME = bjohnson

1061 PERIMETER DRIVE SUITE 1028  
 SCHAMBERG, ILLINOIS 60173  
 (847) 905-9800

