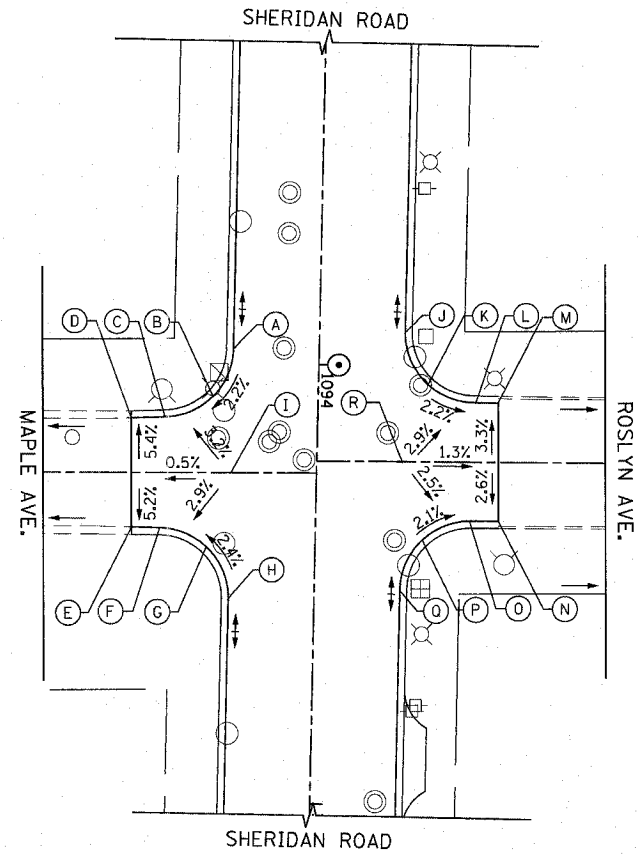
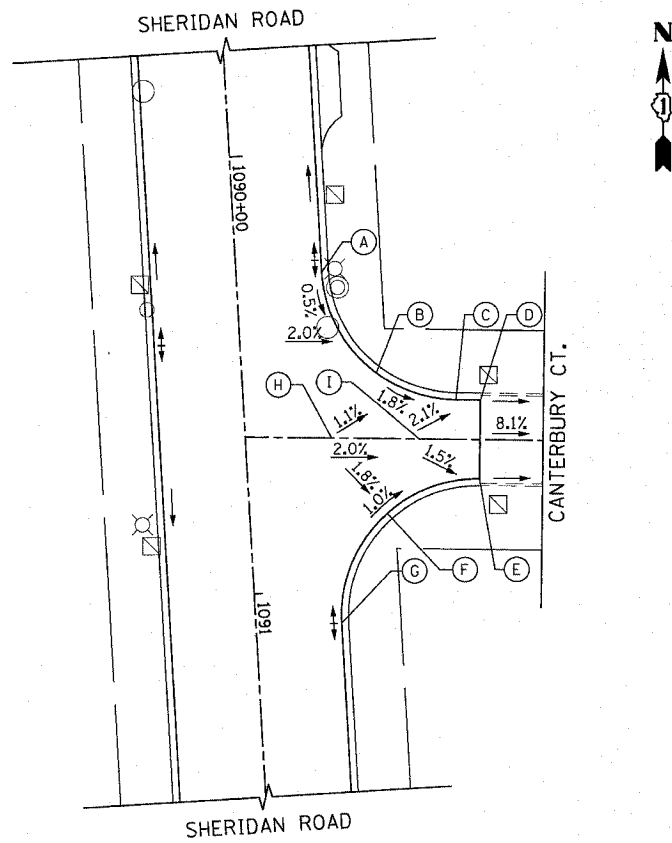


F.A.U.I. RTE.	SECTION	COUNTY	TOTAL SHEETS	SHEET NO.
3509	00-00173-00-FP	COOK	246	116

STA. TO STA.
FED. ROAD DIST. NO. 7 ILLINOIS FED. AID PROJECT

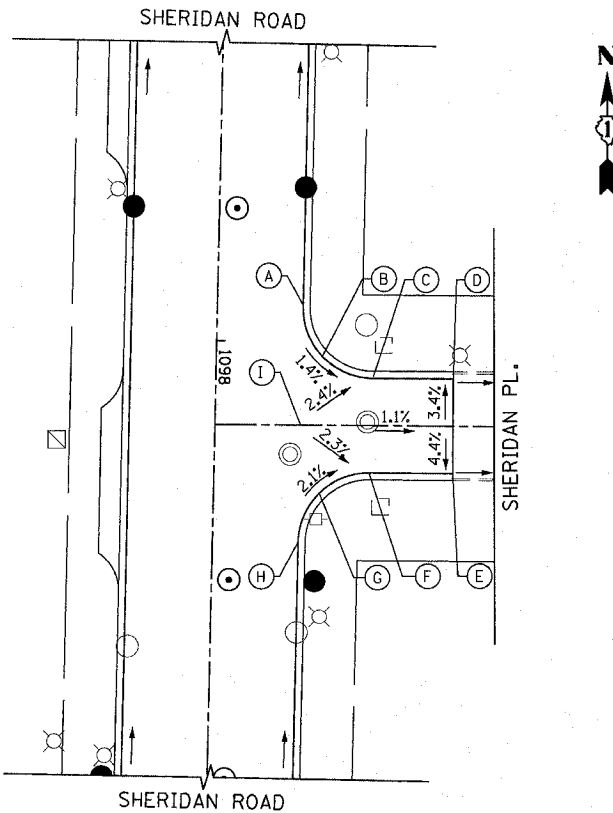
	STATION	OFFSET	ELEVATION
A	1090+27.56	19.50' LT	616.79
B	1090+48.69	27.81' LT	616.59
C	1090+58.48	48.29' LT	616.17
D	1090+58.88	53.89' LT	616.07 (ME)
E	1090+76.79	52.65' LT	616.17 (ME)
F	1090+81.74	33.07' LT	616.42
G	1091+07.74	19.50' LT	616.67
H	1090+65.50	19.50' LT	616.79
I	1090+66.74	37.46' LT	616.45



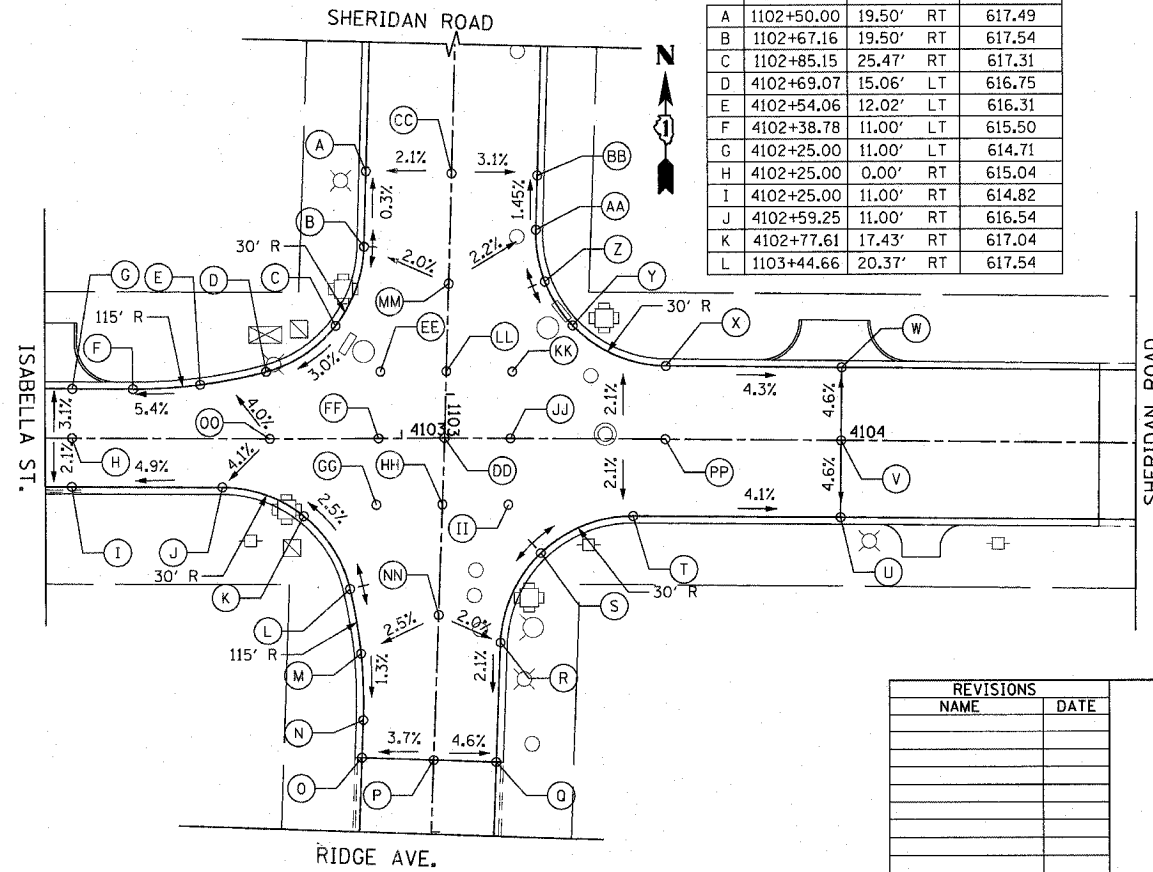
	STATION	OFFSET	ELEVATION
A	1093+96.76	19.50' RT	616.66
B	1094+07.78	23.93' RT	616.39
C	1094+12.71	34.76' RT	616.11
D	1094+13.07	42.43' RT	615.94 (ME)
E	1094+37.86	41.83' RT	615.97 (ME)
F	1094+37.89	35.43' RT	616.13
G	1094+42.60	24.16' RT	616.43
H	1094+53.89	19.50' RT	616.74
I	1094+25.07	19.50' RT	616.73
J	1093+92.10	19.50' LT	616.64
K	1094+03.43	24.21' LT	616.37
L	1094+08.10	35.56' LT	616.11
M	1094+08.08	40.95' LT	615.98 (ME)
N	1094+34.95	41.59' LT	616.08 (ME)
O	1094+35.03	35.28' LT	616.21
P	1094+39.80	24.11' LT	616.48
Q	1094+51.03	19.50' LT	616.74
R	1094+21.81	19.50' LT	616.72

ME = MATCH EXISTING

	STATION	OFFSET	ELEVATION
A	1097+91.77	19.50' LT	617.23
B	1098+03.11	24.22' LT	617.05
C	1098+07.90	35.75' LT	616.86
D	1098+07.61	54.00' LT	616.60 (ME)
E	1098+28.90	54.32' LT	616.49 (ME)
F	1098+29.16	35.29' LT	616.89
G	1098+33.92	24.11' LT	617.16
H	1098+45.16	19.50' LT	617.43
I	1098+18.65	19.50' LT	617.33



	STATION	OFFSET	ELEVATION
A	1102+50.00	19.50' RT	617.49
B	1102+67.16	19.50' RT	617.54
C	1102+85.15	25.47' RT	617.31
D	4102+69.07	15.06' LT	616.75
E	4102+54.06	12.02' LT	616.31
F	4102+38.78	11.00' LT	615.50
G	4102+25.00	11.00' LT	614.71
H	4102+25.00	0.00' RT	615.04
I	4102+25.00	11.00' RT	614.82
J	4102+59.25	11.00' RT	616.54
K	4102+77.61	17.43' RT	617.04
L	1103+44.66	20.37' RT	617.54



	STATION	OFFSET	ELEVATION
M	1103+59.67	17.33' RT	617.35
N	1103+74.95	16.32' RT	617.24
O	1103+83.65	16.32' RT	617.11 (ME)
P	1103+83.65	0.00' RT	617.71 (ME)
Q	1103+83.66	14.25' LT	617.06 (ME)
R	1103+56.02	14.26' LT	617.55
S	1103+35.11	22.77' LT	617.70
T	4103+52.79	17.40' RT	617.41
U	4104+00.00	17.35' RT	615.47
V	4104+00.00	0.00' RT	616.27
W	4104+00.00	16.46' LT	615.51
X	4103+60.09	16.50' LT	617.21
Y	1102+83.75	28.47' LT	617.47
Z	1102+74.00	21.86' LT	617.56
AA	1102+62.35	19.50' LT	617.48
BB	1102+50.00	19.50' LT	617.30
CC	1102+50.00	0.00' RT	617.88
DD	1103+09.77	0.00' RT	618.01
EE	1102+95.24	15.00' RT	617.60
FF	1103+10.36	15.00' RT	617.79
GG	1103+25.37	15.00' RT	617.45
HH	1103+24.78	0.00' RT	617.98
II	1103+24.39	15.00' LT	617.82
JJ	1103+09.49	15.00' LT	618.04
KK	1102+94.49	15.00' LT	617.72
LL	1102+94.76	0.00' RT	618.01
MM	1102+75.00	0.00' RT	617.96
NN	1103+50.00	0.00' RT	617.87
OO	4102+70.00	0.00' RT	617.15
PP	4103+60.00	0.00' RT	617.65

REVISIONS	NAME	DATE

ILLINOIS DEPARTMENT OF TRANSPORTATION
INTERSECTION DETAILS
SHERIDAN ROAD

DATE 7/13/07
DRAWN BY LTD
CHECKED BY BJL

HORIZ. 1"=20'

PLOT DATE = 7/12/2007
FILE NAME = g:\c065\0095_road\sherdan\intersections\sherdan
SCHAUMBURG, ILLINOIS 60173
USER NAME = gjohnson

651 PERIMETER DRIVE, SUITE 1025
SCHAUMBURG, ILLINOIS 60173
(847) 905-9800

