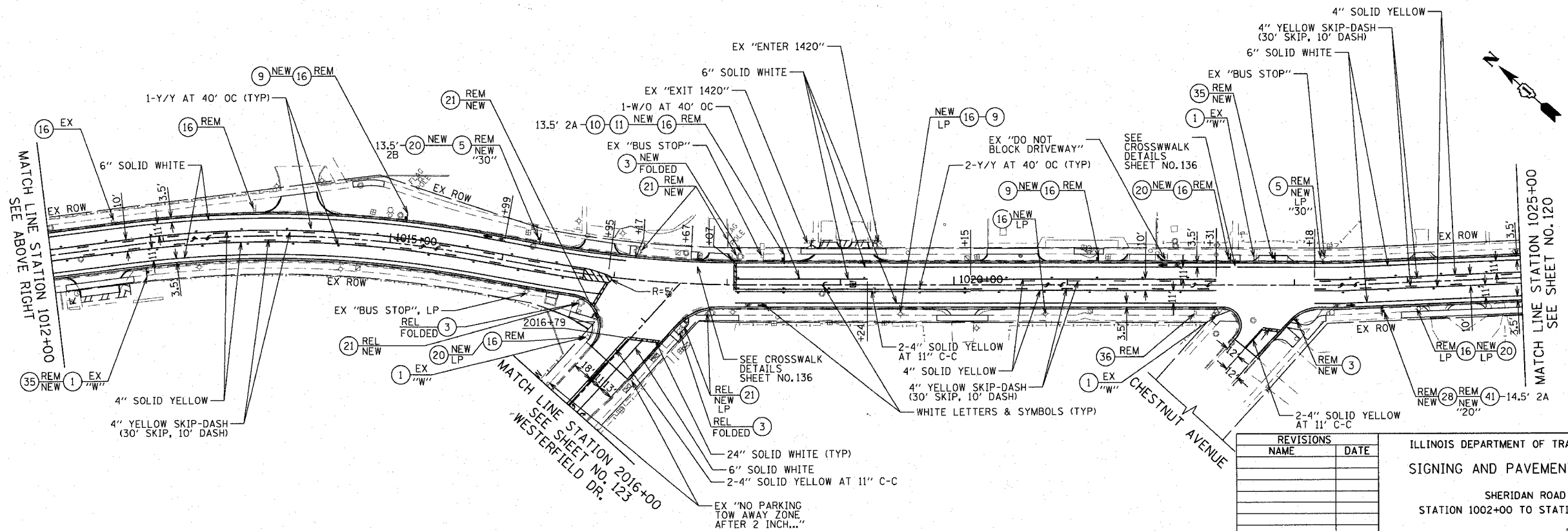
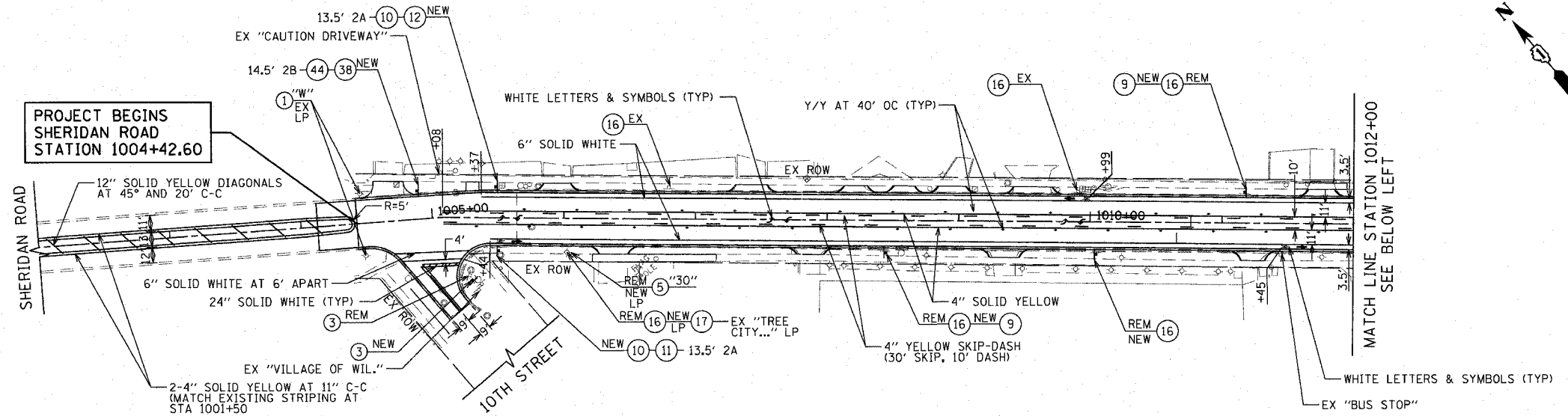


F.A. RTE.	SECTION	COUNTY	TOTAL SHEETS	SHEET NO.
3509	00-00773-00-FP	COOK	246	119
STA. 1002+00		TO STA. 1025+00		
FED. ROAD DIST. NO. 7		ILLINOIS FED. AID PROJECT		

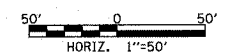
- NOTES:**
- FOR COMBINATION SIGNS, HEIGHT AND SIGN TYPES IDENTIFIED ON THE SHEETS SHALL BE USED.
 - SEE SHEET NO. 118 FOR AN INDEX OF SIGNS AND OTHER LEGENDS.



REVISIONS	
NAME	DATE

ILLINOIS DEPARTMENT OF TRANSPORTATION
SIGNING AND PAVEMENT MARKING
 SHERIDAN ROAD
 STATION 1002+00 TO STATION 1025+00

DATE 7/13/07
 DRAWN BY LTD
 CHECKED BY BJL



PLOT DATE = 7/12/2007
 FILE NAME = g:\v\06\10005\road\sherasign\sign119.dwg
 USER NAME = djohnson

1051 PERIMETER DRIVE, SUITE 1025
 SCHAMBERG, ILLINOIS 60173
 (847) 895-8600

