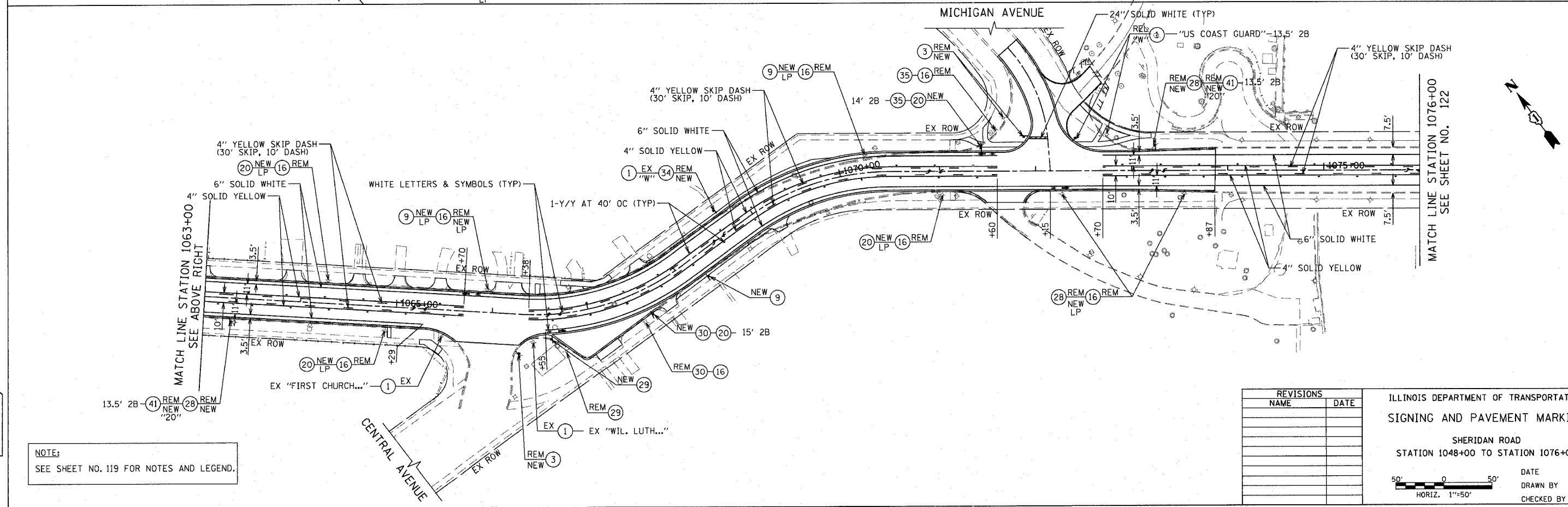
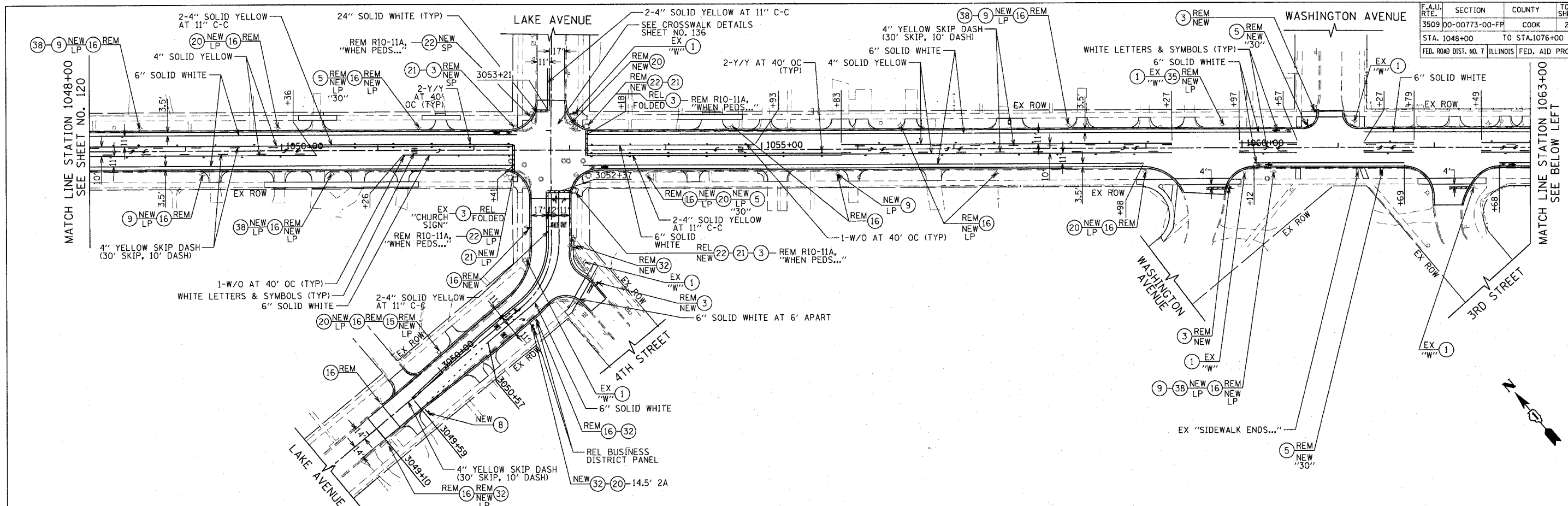


F.A.U. RTE.	SECTION	COUNTY	TOTAL SHEETS	SHEET NO.
3509	00-00773-00-FP	COOK	246	121
STA. 1048+00		TO STA. 1076+00		
FED. ROAD DIST. NO. 7		ILLINOIS FED. AID PROJECT		



NOTE:
SEE SHEET NO. 119 FOR NOTES AND LEGEND.

REVISIONS	
NAME	DATE

ILLINOIS DEPARTMENT OF TRANSPORTATION
SIGNING AND PAVEMENT MARKING

SHERIDAN ROAD
STATION 1048+00 TO STATION 1076+00

DATE 7/13/07
DRAWN BY LTD
CHECKED BY BJL

50' 0 50'
HORIZ. 1"=50'

PLOT DATE = 7/12/2007
FILE NAME = g:\c068\8085\road\sherdan\ltd\ltd3.shx
PLOT NAME = sherdan / IN
USER NAME = bjoelme

1051 PERIMETER DRIVE SUITE 1025
SCHAMUNBURG, ILLINOIS 60173
(847) 805-8800

