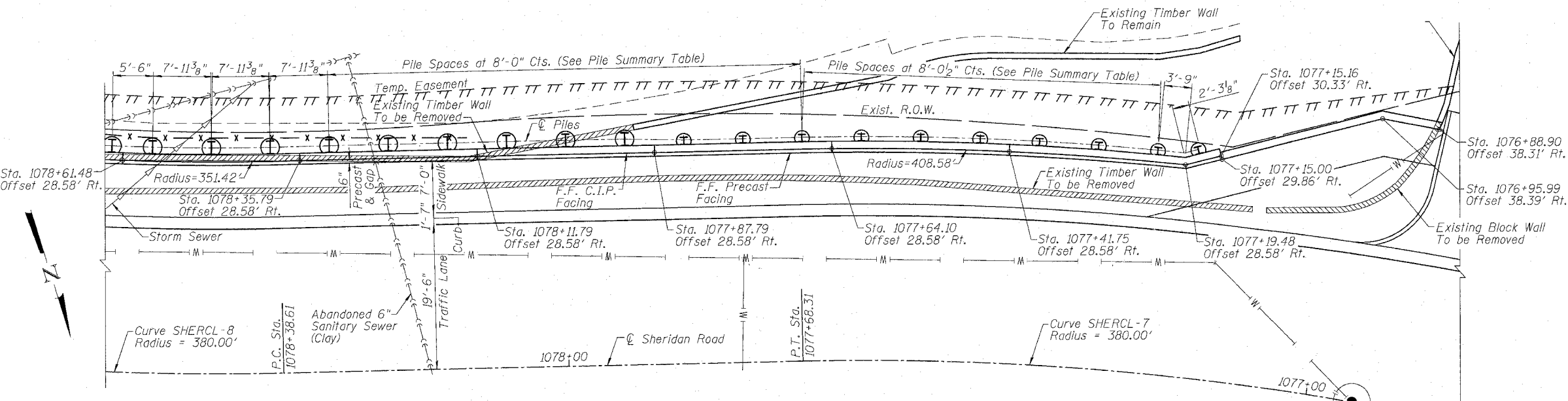
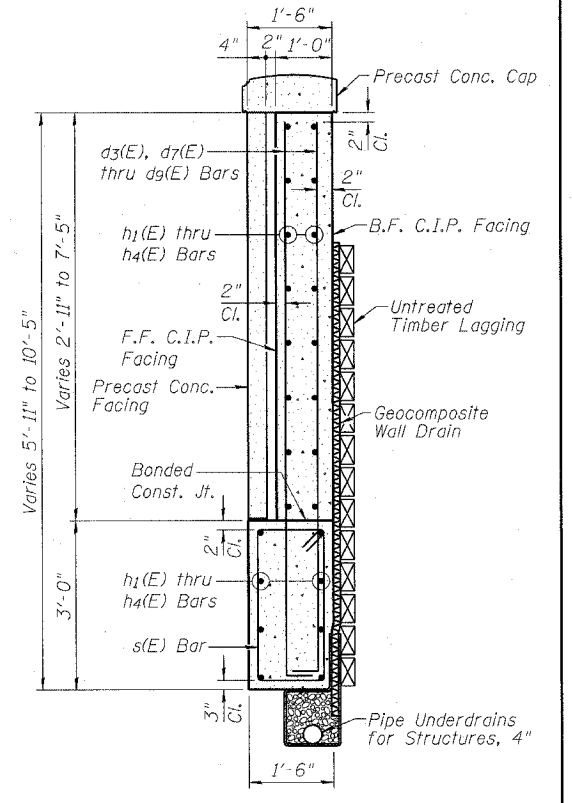


ELEVATION



PLAN



SECTION B-B

LEGEND:

- Timber Wall Removal paid for as "Retaining Wall Removal".
- Segmental Block Wall Removal paid for as "Retaining Wall Removal".

Notes:

1. Stations and offsets are along the front face of the Cast-in-Place Facing.
2. Panel lengths are measured along the front face of the Cast-in-Place facing.
3. In the Pile Summary table, stations and offsets are given at the center of pile.
4. See Sheet 4 of 9 for Construction and Expansion Joint details, Pipe Underdrain details, Bar Bends and Bill of Material.
5. See Sheet 134 for Precast Concrete Facing, Precast Concrete Cap and connection details.
6. Cost of removing any conflicting portions of the abandoned pipes shall be paid for as "Plug Existing Sanitary Sewers".

PILE SUMMARY

Pile Number	Station	Offset (Ft. Rt.)	Pile Size	Bottom of Drilled Shaft	Top of Drilled Shaft	Top of Pile	Length (Ft.)	Encasement Diameter
21	1078+57.16	30.475	W21x101	581.17	600.58	608.66	27.49	2'-6"
22	1078+48.52	30.475	W21x101	581.17	600.58	608.69	27.52	2'-6"
23	1078+39.88	30.475	W21x101	581.17	600.58	608.74	27.57	2'-6"
24	1078+31.79	30.475	W21x101	581.17	600.58	608.79	27.62	2'-6"
25	1078+23.79	30.475	W21x101	581.17	600.58	608.84	27.67	2'-6"
26	1078+15.79	30.475	W21x101	581.17	600.58	608.89	27.72	2'-6"
27	1078+07.79	30.475	W21x101	581.17	600.58	608.93	27.76	2'-6"
28	1077+99.79	30.475	W21x101	581.17	600.58	608.97	27.80	2'-6"
29	1077+91.79	30.475	W21x101	581.17	600.58	608.51	27.34	2'-6"
30	1077+83.79	30.121	W12x106	582.50	600.83	608.06	25.56	2'-0"

Pile Number	Station	Offset (Ft. Rt.)	Pile Size	Bottom of Drilled Shaft	Top of Drilled Shaft	Top of Pile	Length (Ft.)	Encasement Diameter
31	1077+75.79	30.121	W12x106	582.50	600.83	607.61	25.11	2'-0"
32	1077+67.82	30.121	W12x106	582.50	600.83	607.15	24.65	2'-0"
33	1077+60.37	30.100	W12x79	584.50	600.83	606.73	22.23	2'-0"
34	1077+52.92	30.100	W12x79	584.50	600.83	606.31	21.81	2'-0"
35	1077+45.47	30.100	W12x79	584.50	600.83	605.67	21.17	2'-0"
36	1077+38.02	30.087	W12x53	588.00	601.08	604.89	16.89	2'-0"
37	1077+30.57	30.087	W12x53	588.00	601.08	604.70	16.70	2'-0"
38	1077+23.12	30.087	W12x53	588.00	601.08	604.50	16.50	2'-0"
39	1077+18.08	30.750	W12x53	588.00	601.08	603.83	15.83	2'-0"

DESIGNED	MDS
CHECKED	SLC
DRAWN	MDS
CHECKED	SLC

PLAN AND ELEVATION II
 RETAINING WALL ALONG SHERIDAN ROAD
 F.A.P. ROUTE 3509 SECTION 00-00173-00-FP
 COOK COUNTY
 STATION 1077+15.00 TO STATION 1080+25.00

b:\holman 1/12/2007 10:09:03 AM - g:\c06\0006\Structural\Sheets\Wall\Elevation 2.sht