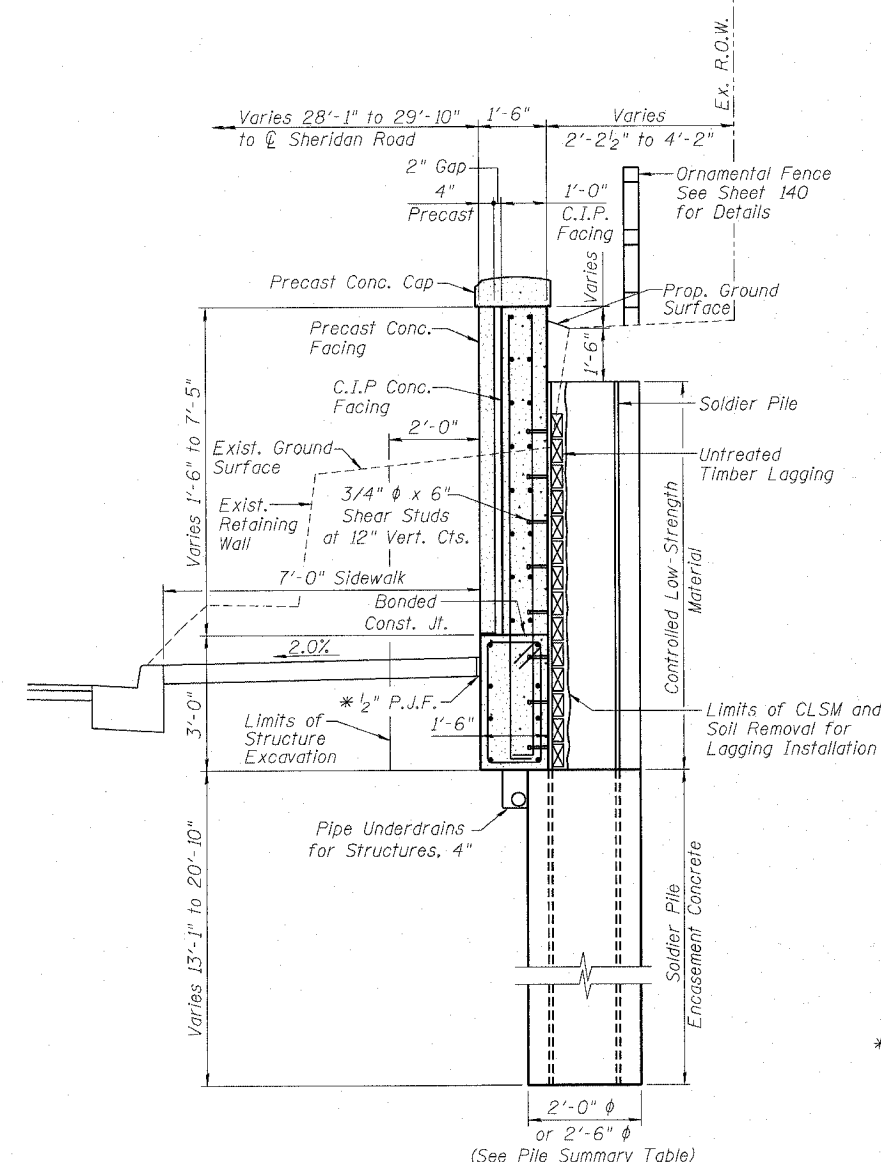


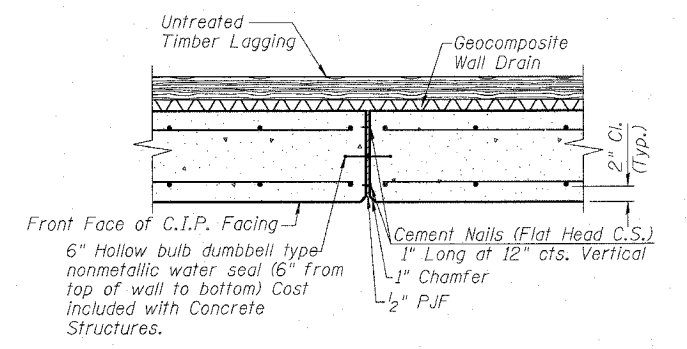
BILL OF MATERIAL

BAR	NO.	SIZE	LENGTH	SHAPE
d(E)	18	#5	4'-11"	□
d1(E)	50	#5	5'-2"	□
d2(E)	50	#5	5'-9"	□
d3(E)	112	#5	6'-4"	□
d4(E)	50	#5	7'-10"	□
d5(E)	50	#5	9'-4"	□
d6(E)	50	#5	10'-7"	□
d7(E)	150	#5	10'-10"	□
d8(E)	50	#5	9'-7"	□
d9(E)	50	#5	8'-7"	□
h(E)	14	#5	9'-7"	□
h1(E)	174	#5	26'-2"	□
h2(E)	48	#5	23'-7"	□
h3(E)	8	#5	6'-11"	□
h4(E)	8	#5	6'-10"	□
h5(E)	16	#6	23'-7"	□
h6(E)	8	#6	26'-2"	□
s(E)	315	#5	8'-5"	□

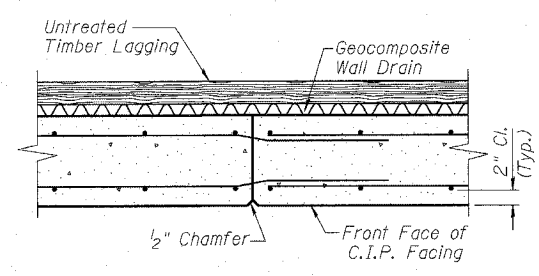
DESCRIPTION	UNIT	QUANTITY
Structure Excavation	Cu. Yd.	244
Concrete Structures	Cu. Yd.	38
Stud Shear Connectors	Each	272
Untreated Timber Lagging	Sq. Ft.	1531
Furnishing Soldier Piles (W Section)	Foot	862
Reinforcement Bars, Epoxy Coated	Pound	15,330
Geocomposite Wall Drain	Sq. Yd.	123
Pipe Underdrains for Structures, 4"	Foot	301
Drilling and Setting Soldier Piles	Cu. Ft.	3562



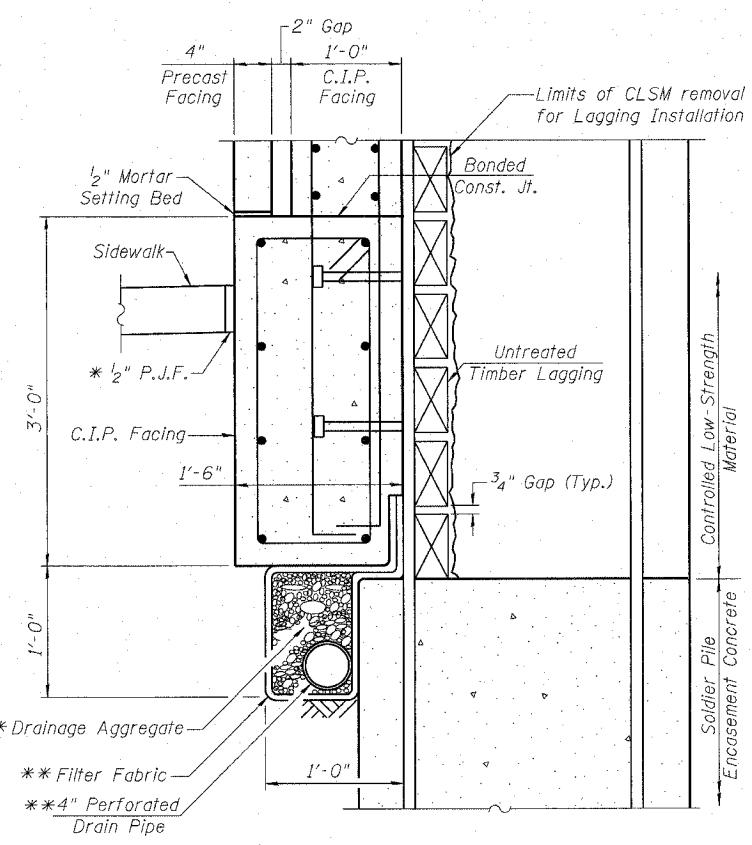
TYPICAL SECTION THRU WALL



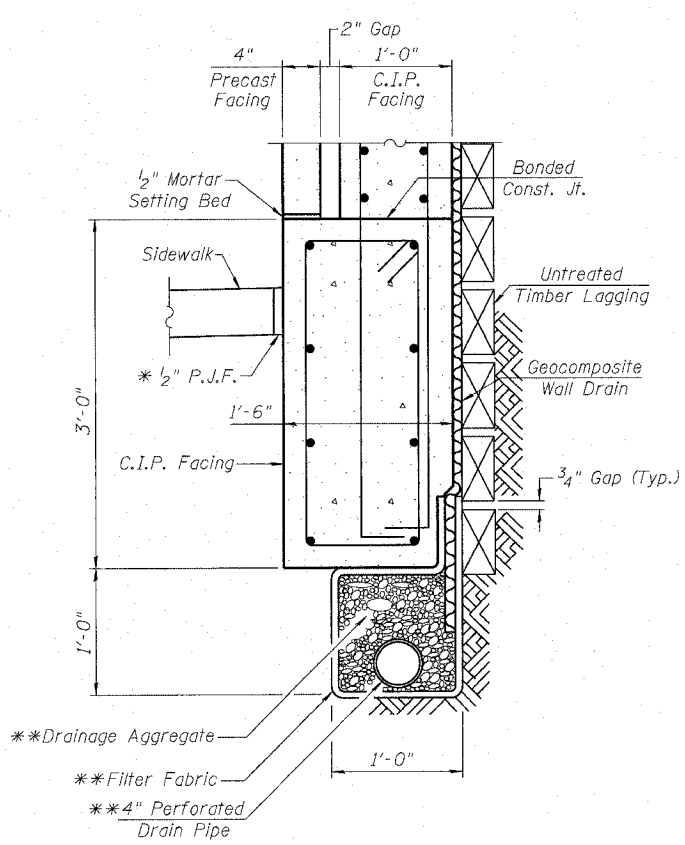
EXPANSION JOINT DETAIL



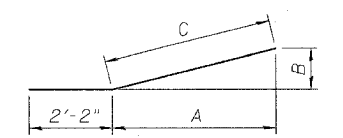
CONSTRUCTION JOINT DETAIL



AT SOLDIER PILES

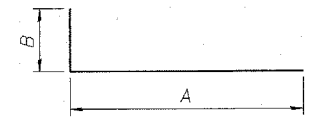


BETWEEN SOLDIER PILES



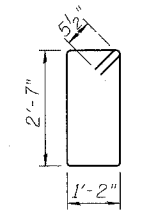
BARS h3(E) AND h4(E)

BAR	A	B	C	LENGTH
h3(E)	4'-5 5/8"	1'-7 1/2"	4'-9"	6'-11"
h4(E)	4'-4 5/8"	1'-7 1/8"	4'-8"	6'-10"



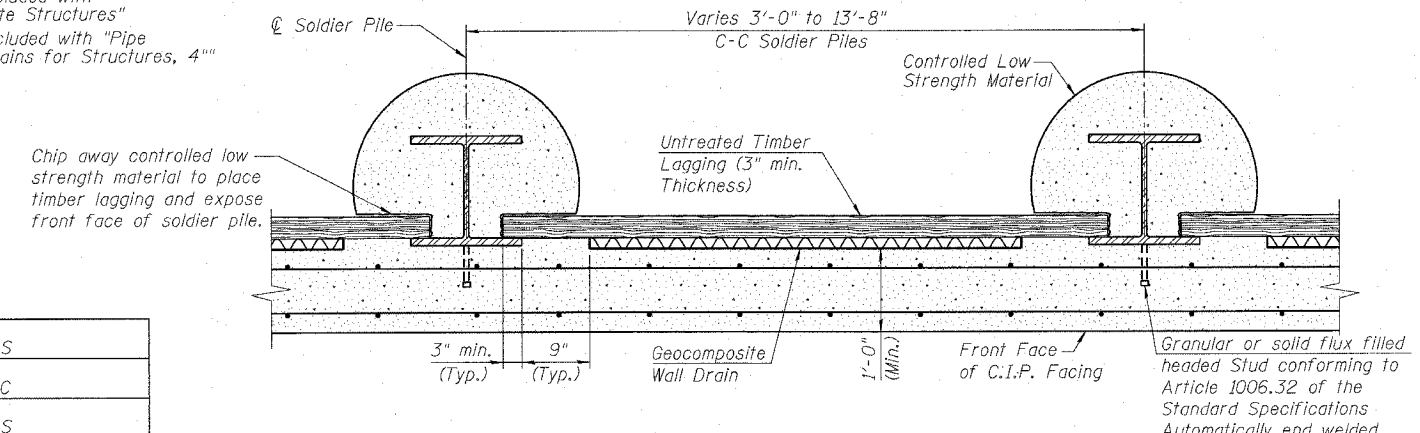
BARS d(E) THRU d9(E)

BAR	B	A	LENGTH
d(E)	10"	4'-1"	4'-11"
d1(E)	10"	4'-4"	5'-2"
d2(E)	10"	4'-11"	5'-9"
d3(E)	10"	5'-6"	6'-4"
d4(E)	10"	7'-0"	7'-10"
d5(E)	10"	8'-6"	9'-4"
d6(E)	10"	9'-9"	10'-7"
d7(E)	10"	10'-0"	10'-10"
d8(E)	10"	8'-9"	9'-7"
d9(E)	10"	7'-9"	8'-7"



BARS s(E)

* Cost included with "Concrete Structures"
 ** Cost included with "Pipe Underdrains for Structures, 4"



SECTION THRU DRILLED SOLDIER PILE WALL

DESIGNED	MDS
CHECKED	SLC
DRAWN	MDS
CHECKED	SLC

Notes:
 See Sheet 134 for details of Precast Concrete Facing, Precast Concrete Cap and connection details.

SOLDIER PILE DETAILS

RETAINING WALL ALONG SHERIDAN ROAD
 F.A.P. ROUTE 3509 SECTION 00-00173-00-FP
 COOK COUNTY
 STATION 1077+15.00 TO STATION 1080+25.00