

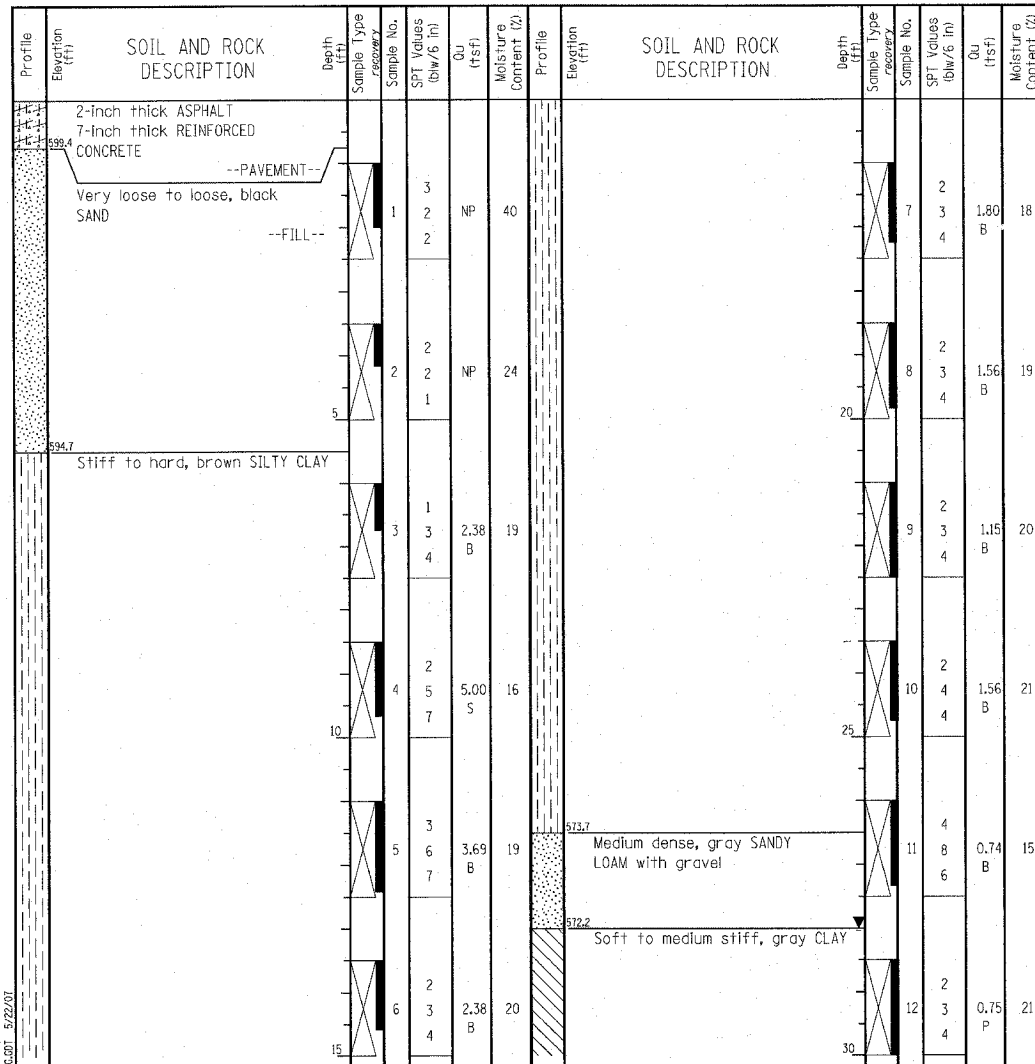
W Wang Engineering, INC.
Consulting Geotechnical and Environmental Engineers
wangeng@wangeng.com
1145 Main Street
Lombard, IL 60148
Telephone: 630 953-9928
Fax: 630 953-9938

BORING LOG RW-01
WEI Job No.: 790-17-01

Datum: NGVD
Elevation: 600.17 ft
North: 1970638.52 ft
East: 1160444.62 ft
Station: 1077+47.13
Offset: 17.56 RT

Client: TranSystems Corporation
Project: Sheridan Road Improvements
Location: Wilmette, IL

Page 1 of 2



| GENERAL NOTES | | WATER LEVEL DATA | |
|---------------------------|---------------------------------------|-------------------|---------------------------------------|
| Begin Drilling | 10-05-2006 | Complete Drilling | 10-05-2006 |
| Drilling Contractor | Precon Drilling | Drill Rig | CME-75 TMR |
| Driller | J&R | Logger | DC |
| Checked by | BC | Drilling Method | 3.25" HSA; backfilled upon completion |
| Drilling Method | 3.25" HSA; backfilled upon completion | | |
| While Drilling | DRY | | |
| At Completion of Drilling | 28.00 ft | | |
| Time After Drilling | NA | | |
| Depth to Water | NA | | |

The stratification lines represent the approximate boundary between soil types; the actual transition may be gradual.

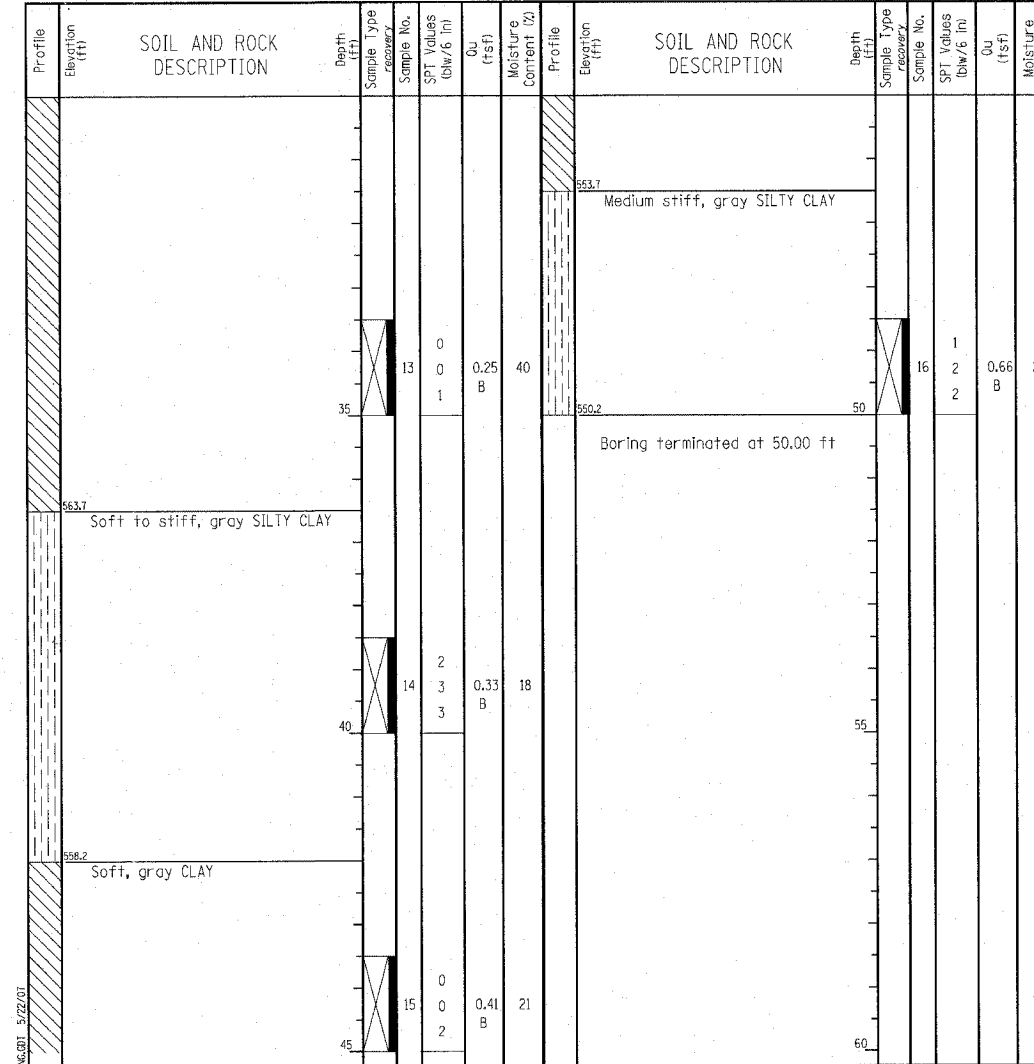
W Wang Engineering, INC.
Consulting Geotechnical and Environmental Engineers
wangeng@wangeng.com
1145 Main Street
Lombard, IL 60148
Telephone: 630 953-9928
Fax: 630 953-9938

BORING LOG RW-01
WEI Job No.: 790-17-01

Datum: NGVD
Elevation: 600.17 ft
North: 1970638.52 ft
East: 1160444.62 ft
Station: 1077+47.13
Offset: 17.56 RT

Client: TranSystems Corporation
Project: Sheridan Road Improvements
Location: Wilmette, IL

Page 2 of 2



| GENERAL NOTES | | WATER LEVEL DATA | |
|---------------------------|---------------------------------------|-------------------|---------------------------------------|
| Begin Drilling | 10-05-2006 | Complete Drilling | 10-05-2006 |
| Drilling Contractor | Precon Drilling | Drill Rig | CME-75 TMR |
| Driller | J&R | Logger | DC |
| Checked by | BC | Drilling Method | 3.25" HSA; backfilled upon completion |
| Drilling Method | 3.25" HSA; backfilled upon completion | | |
| While Drilling | DRY | | |
| At Completion of Drilling | 28.00 ft | | |
| Time After Drilling | NA | | |
| Depth to Water | NA | | |

The stratification lines represent the approximate boundary between soil types; the actual transition may be gradual.

DESIGNED MDS
CHECKED SLC
DRAWN MDS
CHECKED SLC

BORING LOGS I
RETAINING WALL ALONG SHERIDAN ROAD
F.A.P. ROUTE 3509 SECTION 00-00173-00-FP
COOK COUNTY
STATION 1077+15.00 TO STATION 1080+25.00

TranSystems
3051 PERIMETER DRIVE, SUITE 1025
SCHMIDGALL, IL 60173-5058
TEL (847) 605-9600
FAX (847) 605-9630

b:\preman 7/12/2007 10:05:15 AM - g:\vado6\0005\Structural\Sheets\SoilBoring_Lsht