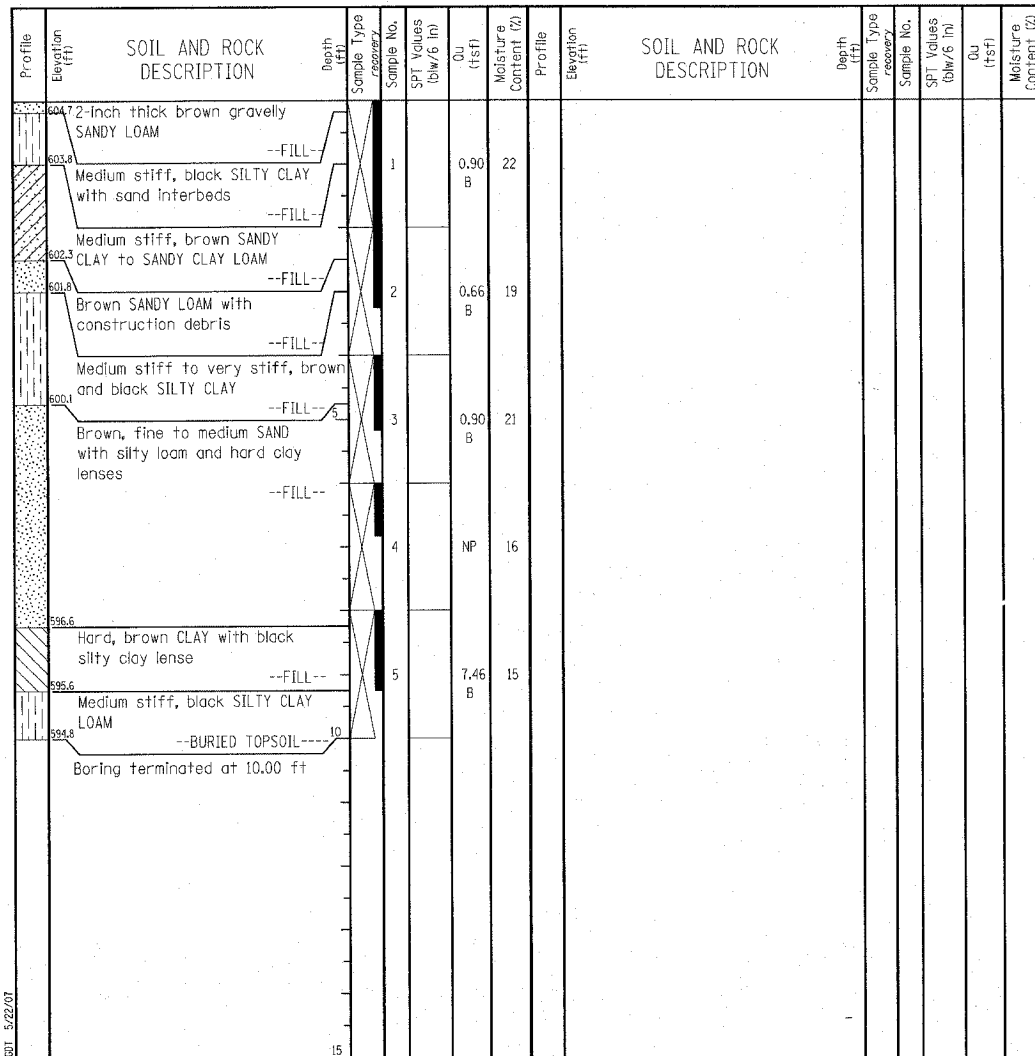


W Wang Engineering, INC.
Consulting Geotechnical and Environmental Engineers
wangeng3@wangeng.com
1145 Main Street
Lombard, IL 60148
Telephone: 630 953-9928
Fax: 630 953-9938

BORING LOG HA-01
WEI Job No.: 790-17-01

Datum: NGVD
Elevation: 604.82 ft
North: 1970607.85 ft
East: 1160476.35 ft
Station: 1077+84.05
Offset: 39.29

Client: TranSystems Corporation
Project: Sheridan Road Improvements
Location: Wilmette, IL



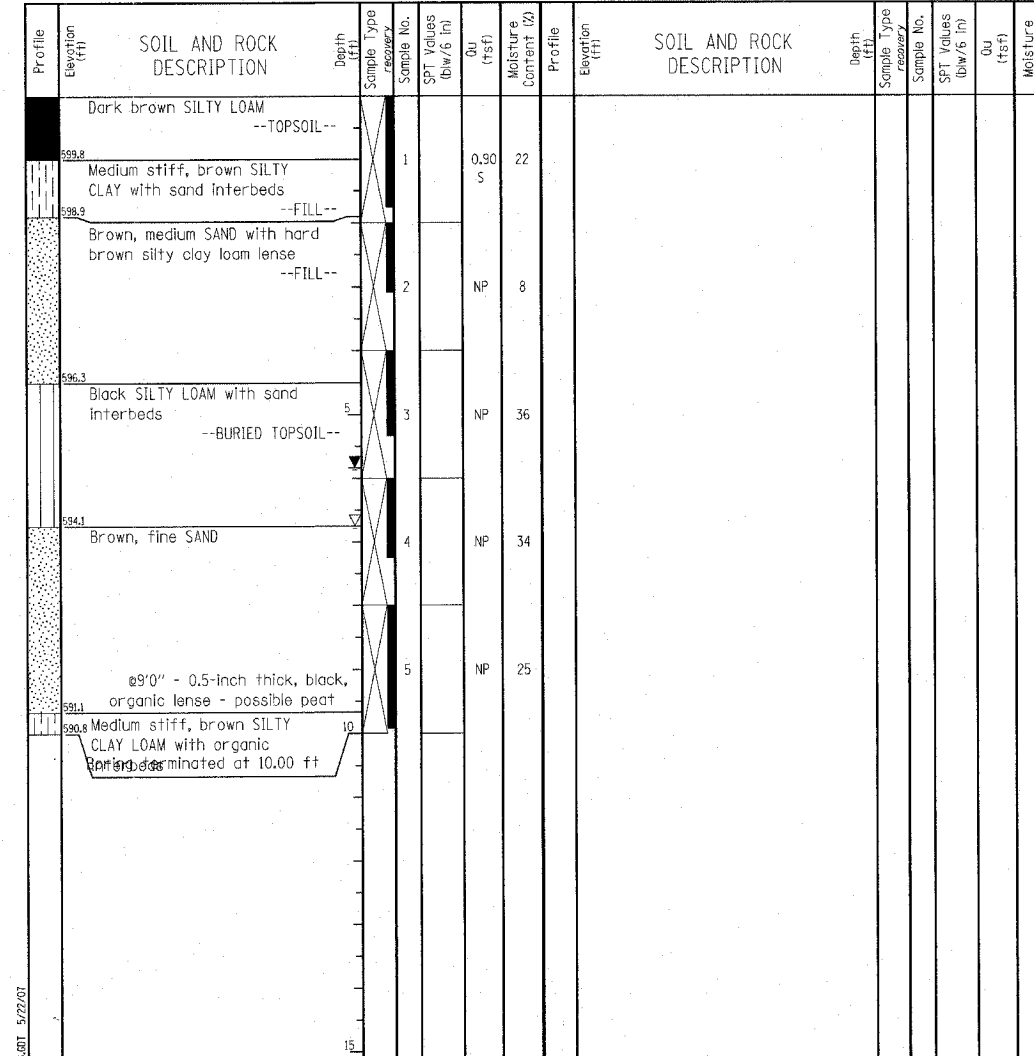
GENERAL NOTES		WATER LEVEL DATA	
Begin Drilling	10-25-2006	Complete Drilling	10-25-2006
Drilling Contractor	Precon Drilling	Drill Rig	Pneumatic Hammer
Driller	J&R	Logger	JK
Checked by	WW	Depth to Water	NA
Drilling Method 2" x 2" split spoon sampler; backfilled upon completion		The stratification lines represent the approximate boundary between soil types; the actual transition may be gradual.	

W Wang Engineering, INC.
Consulting Geotechnical and Environmental Engineers
wangeng3@wangeng.com
1145 Main Street
Lombard, IL 60148
Telephone: 630 953-9928
Fax: 630 953-9938

BORING LOG HA-02
WEI Job No.: 790-17-01

Datum: NGVD
Elevation: 600.81 ft
North: 1970567.82 ft
East: 1160617.36 ft
Station: 1079+40.45
Offset: 32.98

Client: TranSystems Corporation
Project: Sheridan Road Improvements
Location: Wilmette, IL



GENERAL NOTES		WATER LEVEL DATA	
Begin Drilling	10-25-2006	Complete Drilling	10-25-2006
Drilling Contractor	Precon Drilling	Drill Rig	Pneumatic Hammer
Driller	J&R	Logger	JK
Checked by	WW	Depth to Water	NA
Drilling Method 2" x 2" split spoon sampler; backfilled upon completion		The stratification lines represent the approximate boundary between soil types; the actual transition may be gradual.	

DESIGNED MDS
CHECKED SLC
DRAWN MDS
CHECKED SLC

BORING LOGS V
RETAINING WALL ALONG SHERIDAN ROAD
F.A.P. ROUTE 3509 SECTION 00-00173-00-FP
COOK COUNTY
STATION 1077+15.00 TO STATION 1080+25.00

TranSystems
851 PERIMETER DRIVE, SUITE 1026
SCHMIDT, IL 60173-8058
TEL (847) 605-9600
FAX (847) 605-9630

b:\p\m\7/12/2007 10:05:31AM - g:\vcd06\0005\Structural\Sheet\Soil\Boring_V.sht