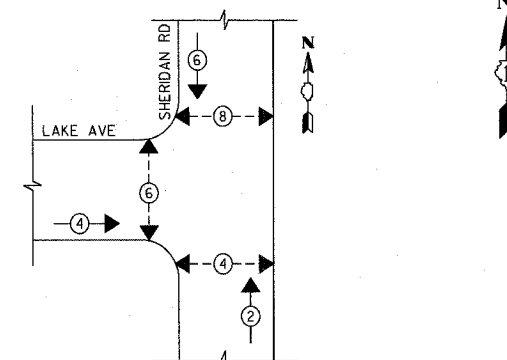


F.A.U. RTE.	SECTION	COUNTY	TOTAL SHEETS	SHEET NO.
3509	00-00173-00-FP	COOK	246	143
STA.		TO STA.		
FED. ROAD DIST. NO. 7		ILLINOIS FED. AID PROJECT		

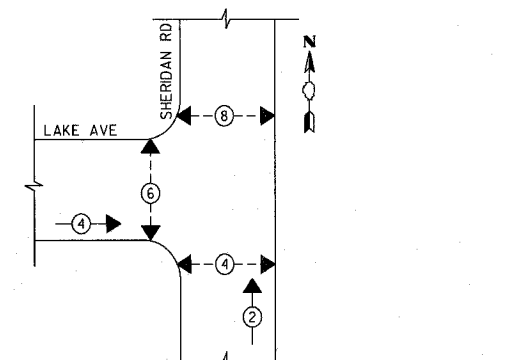
NOTES:
 PUSH BUTTON "B" SHALL PLACE A CALL IN PHASES 4 AND 6
 PUSH BUTTON "C" SHALL PLACE A CALL IN PHASES 6 AND 8

TEMPORARY CONTROLLER SEQUENCE
 PRE-STAGE, STAGES 1A, 1B, WINTER SHUTDOWN, 4 AND POST STAGE 4



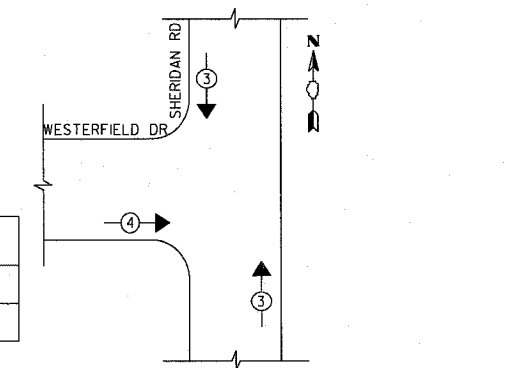
PHASE DESIGNATION DIAGRAM

TEMPORARY CONTROLLER SEQUENCE
 STAGES 2A AND 2B



PHASE DESIGNATION DIAGRAM

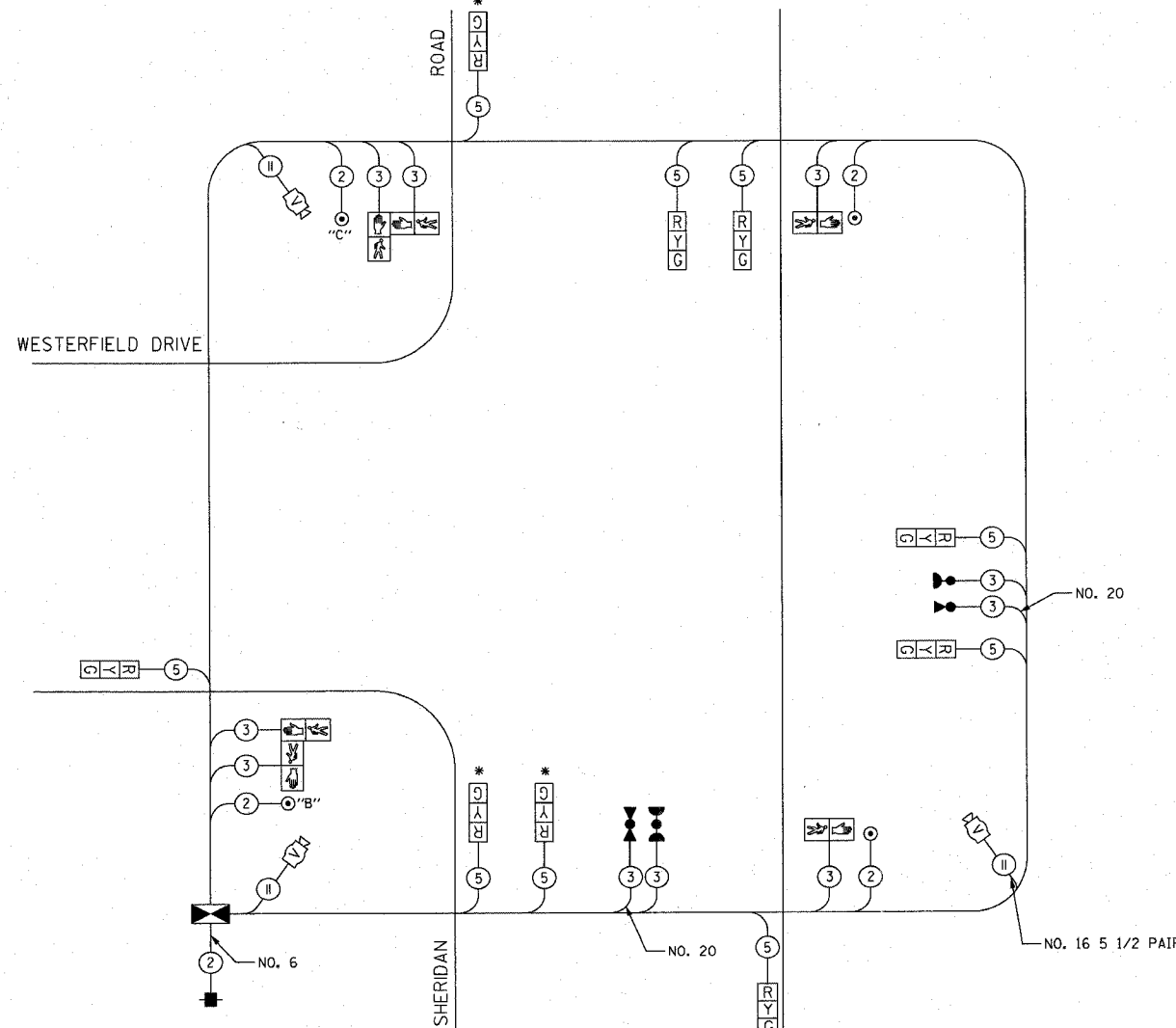
PROPOSED
 EMERGENCY VEHICLE PREEMPTION SEQUENCE



EMERGENCY VEHICLE PREEMPTOR	3	4
MOVEMENT	↓	→

CONSTRUCTION NOTES:

- DURING THE MAINTENANCE OF TRAFFIC PRE-STAGE AND STAGES 1, 2, 3 AND 4, THE SIGNAL HEADS SHALL BE MOVED AS NECESSARY TO ALIGN WITH THE TRAFFIC LANES.
- THESE SIGNAL HEADS SHALL BE BAGGED DURING MAINTENANCE OF TRAFFIC STAGE 2A AND 2B DUE TO THE TRAFFIC BEING ONE-WAY NORTHBOUND.
- DURING THE MAINTENANCE OF TRAFFIC STAGES 3, 4, AND POST-STAGE 4, THE SIGNAL HEADS SHALL PLACED TO ALIGN WITH THE PROPOSED LANE CONFIGURATION..



CABLE PLAN

TEMPORARY CABLE DIAGRAM LEGEND

- [R] TEMPORARY TRAFFIC SIGNAL SECTION OR PEDESTRIAN SIGNAL SECTION 12" (300mm)
- [X] TEMPORARY CONTROLLER CABINET
- [S] TEMPORARY SERVICE INSTALLATION
- (5) INDICATES NUMBER OF CONDUCTORS IN CABLE. ALL CONDUCTORS TO BE NUMBER 14 AWG WIRE UNLESS OTHERWISE NOTED
- [EVL] EMERGENCY VEHICLE LIGHT DETECTOR
- [CB] CONFIRMATION BEACON
- [VIL] VEHICLE DETECTOR, INDUCTION LOOP
- [PBD] PUSHBUTTON DETECTOR
- [12"] 12" (300mm) PEDESTRIAN SIGNAL SECTION
- [VMS] MICROWAVE VEHICLE SENSOR
- [VD] VIDEO DETECTOR

PLOT DATE = 7/12/2007
 FILE NAME = G:\CD\85\0085\Road\Sheets\ts\cp\temp\cableplan1.dwg
 PLOT SCALE = 5/8" = 1' / IN.
 USER NAME = bjoirien

1001 PERIMETER DRIVE, SUITE 1025
 SHAWNEEBURG, ILLINOIS 60173
 (815) 935-8800



TYPE	NO. LAMPS	WATTAGE		%OPERATION	TOTAL WATTAGE
		INCAND.	LED		
SIGNAL (RED)	6	135	17	0.5	51
(YELLOW)	6	135	25	0.25	37.5
(GREEN)	6	135	15	0.25	22.5
ARROW	0	135	15	0.25	0
PED SIGNAL	6	90	25	1.00	150
CONTROLLER ILLUM. SIGN	1	100	100	1.00	100
FLASHER				0.50	--
ENERGY COSTS TO:					TOTAL= 361

VILLAGE OF WILMETTE
 1200 WILMETTE AVENUE
 WILMETTE, IL 60091
 ENERGY SUPPLY CONTACT: MR. LARRY SHANK
 PHONE: (847) 816-5465
 COMPANY: COMED

NAME	DATE

ILLINOIS DEPARTMENT OF TRANSPORTATION

TEMPORARY CABLE PLAN AND
 TEMPORARY PHASE DESIGNATION DIAGRAM

SHERIDAN ROAD AND WESTERFIELD DRIVE

SCALE NOT TO SCALE
 DATE 7/12/2007

DRAWN BY SRS
 DESIGNED BY SRS
 CHECKED BY KMM