

F.A. RTE.	SECTION	COUNTY	TOTAL SHEETS	SHEET NO.
3509	00-00173-00-FP	COOK	246	147
STA.		TO STA.		
FED. ROAD DIST. NO.		ILLINOIS FED. AID PROJECT		

NOTES FOR TEMPORARY TRAFFIC SIGNALS

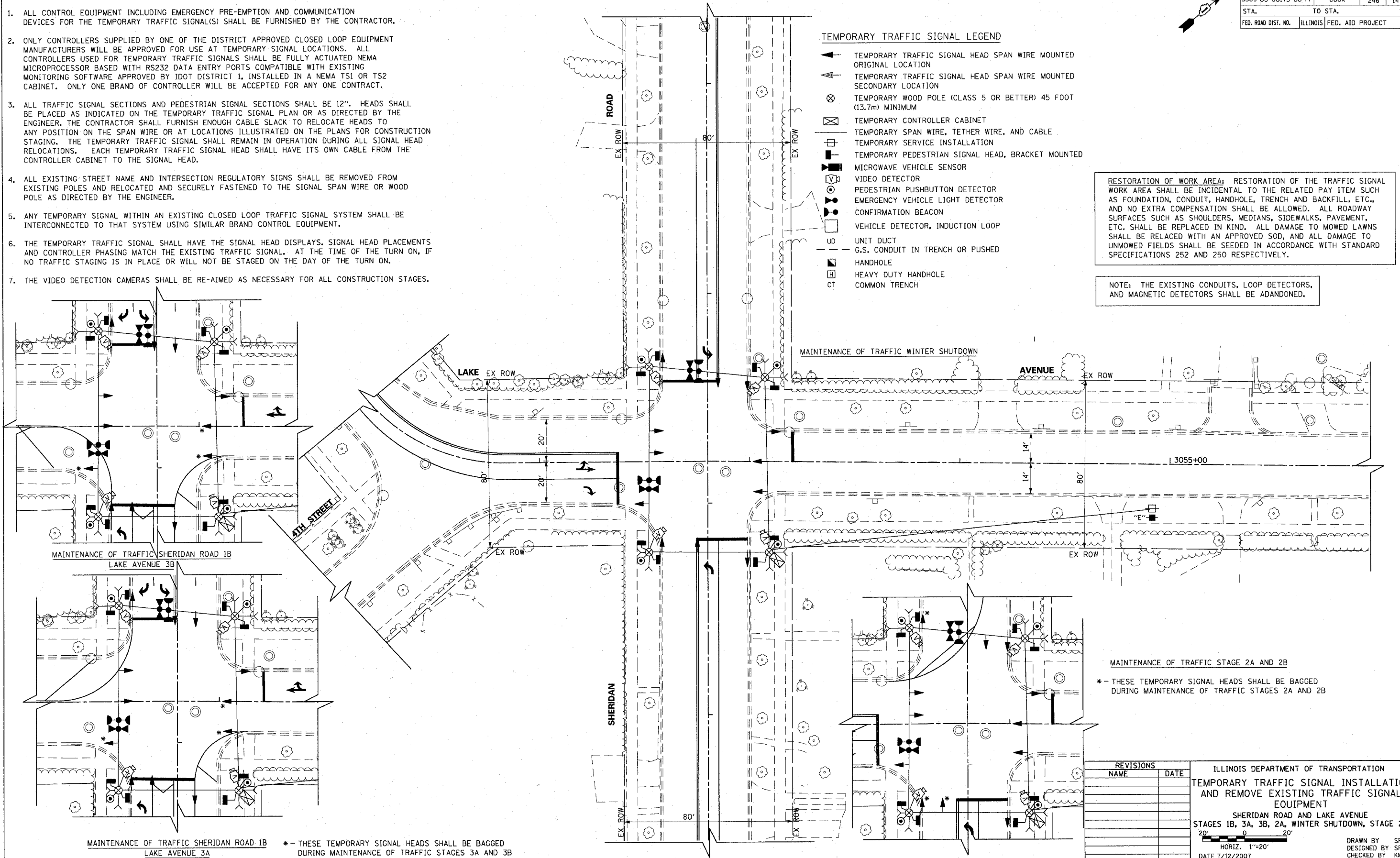
1. ALL CONTROL EQUIPMENT INCLUDING EMERGENCY PRE-EMPTION AND COMMUNICATION DEVICES FOR THE TEMPORARY TRAFFIC SIGNAL(S) SHALL BE FURNISHED BY THE CONTRACTOR.
2. ONLY CONTROLLERS SUPPLIED BY ONE OF THE DISTRICT APPROVED CLOSED LOOP EQUIPMENT MANUFACTURERS WILL BE APPROVED FOR USE AT TEMPORARY SIGNAL LOCATIONS. ALL CONTROLLERS USED FOR TEMPORARY TRAFFIC SIGNALS SHALL BE FULLY ACTUATED NEMA MICROPROCESSOR BASED WITH RS232 DATA ENTRY PORTS COMPATIBLE WITH EXISTING MONITORING SOFTWARE APPROVED BY IDOT DISTRICT 1, INSTALLED IN A NEMA T51 OR T52 CABINET. ONLY ONE BRAND OF CONTROLLER WILL BE ACCEPTED FOR ANY ONE CONTRACT.
3. ALL TRAFFIC SIGNAL SECTIONS AND PEDESTRIAN SIGNAL SECTIONS SHALL BE 12". HEADS SHALL BE PLACED AS INDICATED ON THE TEMPORARY TRAFFIC SIGNAL PLAN OR AS DIRECTED BY THE ENGINEER. THE CONTRACTOR SHALL FURNISH ENOUGH CABLE SLACK TO RELOCATE HEADS TO ANY POSITION ON THE SPAN WIRE OR AT LOCATIONS ILLUSTRATED ON THE PLANS FOR CONSTRUCTION STAGING. THE TEMPORARY TRAFFIC SIGNAL SHALL REMAIN IN OPERATION DURING ALL SIGNAL HEAD RELOCATIONS. EACH TEMPORARY TRAFFIC SIGNAL HEAD SHALL HAVE ITS OWN CABLE FROM THE CONTROLLER CABINET TO THE SIGNAL HEAD.
4. ALL EXISTING STREET NAME AND INTERSECTION REGULATORY SIGNS SHALL BE REMOVED FROM EXISTING POLES AND RELOCATED AND SECURELY FASTENED TO THE SIGNAL SPAN WIRE OR WOOD POLE AS DIRECTED BY THE ENGINEER.
5. ANY TEMPORARY SIGNAL WITHIN AN EXISTING CLOSED LOOP TRAFFIC SIGNAL SYSTEM SHALL BE INTERCONNECTED TO THAT SYSTEM USING SIMILAR BRAND CONTROL EQUIPMENT.
6. THE TEMPORARY TRAFFIC SIGNAL SHALL HAVE THE SIGNAL HEAD DISPLAYS, SIGNAL HEAD PLACEMENTS AND CONTROLLER PHASING MATCH THE EXISTING TRAFFIC SIGNAL. AT THE TIME OF THE TURN ON, IF NO TRAFFIC STAGING IS IN PLACE OR WILL NOT BE STAGED ON THE DAY OF THE TURN ON.
7. THE VIDEO DETECTION CAMERAS SHALL BE RE-AIMED AS NECESSARY FOR ALL CONSTRUCTION STAGES.

TEMPORARY TRAFFIC SIGNAL LEGEND

- ▲ TEMPORARY TRAFFIC SIGNAL HEAD SPAN WIRE MOUNTED ORIGINAL LOCATION
- ▲ TEMPORARY TRAFFIC SIGNAL HEAD SPAN WIRE MOUNTED SECONDARY LOCATION
- ⊗ TEMPORARY WOOD POLE (CLASS 5 OR BETTER) 45 FOOT (13.7m) MINIMUM
- ☒ TEMPORARY CONTROLLER CABINET
- TEMPORARY SPAN WIRE, TETHER WIRE, AND CABLE
- ☐ TEMPORARY SERVICE INSTALLATION
- ☐ TEMPORARY PEDESTRIAN SIGNAL HEAD, BRACKET MOUNTED
- ☐ MICROWAVE VEHICLE SENSOR
- ☐ VIDEO DETECTOR
- ☐ PEDESTRIAN PUSHBUTTON DETECTOR
- ☐ EMERGENCY VEHICLE LIGHT DETECTOR
- ☐ CONFIRMATION BEACON
- ☐ VEHICLE DETECTOR, INDUCTION LOOP
- UD UNIT DUCT
- G.S. CONDUIT IN TRENCH OR PUSHED
- ☐ HANDHOLE
- ☐ HEAVY DUTY HANDHOLE
- CT COMMON TRENCH

RESTORATION OF WORK AREA: RESTORATION OF THE TRAFFIC SIGNAL WORK AREA SHALL BE INCIDENTAL TO THE RELATED PAY ITEM SUCH AS FOUNDATION, CONDUIT, HANDHOLE, TRENCH AND BACKFILL, ETC., AND NO EXTRA COMPENSATION SHALL BE ALLOWED. ALL ROADWAY SURFACES SUCH AS SHOULDERS, MEDIANS, SIDEWALKS, PAVEMENT, ETC. SHALL BE REPLACED IN KIND. ALL DAMAGE TO MOWED LAWNS SHALL BE RELACED WITH AN APPROVED SOD, AND ALL DAMAGE TO UNMOWED FIELDS SHALL BE SEEDED IN ACCORDANCE WITH STANDARD SPECIFICATIONS 252 AND 250 RESPECTIVELY.

NOTE: THE EXISTING CONDUITS, LOOP DETECTORS, AND MAGNETIC DETECTORS SHALL BE ADANDONED.



MAINTENANCE OF TRAFFIC STAGE 2A AND 2B
 * - THESE TEMPORARY SIGNAL HEADS SHALL BE BAGGED DURING MAINTENANCE OF TRAFFIC STAGES 2A AND 2B

MAINTENANCE OF TRAFFIC SHERIDAN ROAD 1B LAKE AVENUE 3A * - THESE TEMPORARY SIGNAL HEADS SHALL BE BAGGED DURING MAINTENANCE OF TRAFFIC STAGES 3A AND 3B

REVISIONS		ILLINOIS DEPARTMENT OF TRANSPORTATION TEMPORARY TRAFFIC SIGNAL INSTALLATION AND REMOVE EXISTING TRAFFIC SIGNAL EQUIPMENT SHERIDAN ROAD AND LAKE AVENUE STAGES 1B, 3A, 3B, 2A, WINTER SHUTDOWN, STAGE 2B
NAME	DATE	
		<p>HORIZ. 1"=20' DATE 7/12/2007</p>

DRAWN BY SRS
 DESIGNED BY SRS
 CHECKED BY KMM

PLOT DATE = 7/12/2007
 FILE NAME = g:\cadd\83964\road\sherdan\temp_ave2.dgn
 PLOT SCALE = 20.0000 / IN.
 USER NAME = E:\jmc

1051 PERIMETER DRIVE, SUITE 1025
 SHALIMBURG, ILLINOIS 60173
 (847) 605-9800

