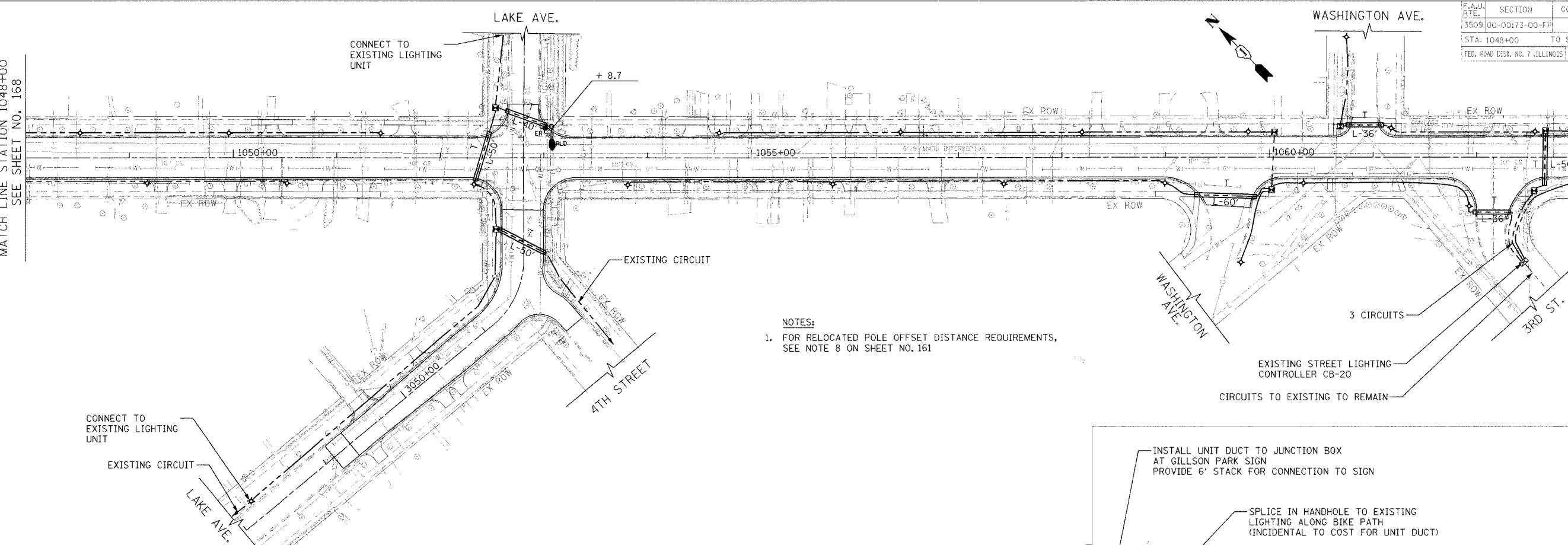


F.A.U. RTE.	SECTION	COUNTY	TOTAL SHEETS	SHEET NO.
3509	00-00173-00-FP	COOK	246	169
STA. 1048+00		TO STA. 1076+00		
FED. ROAD DIST. NO. 7 (ILLINOIS) FED. AID PROJECT				

PLT DATE = 04/08/17  
 FILE NAME = 04/08/17-083904-Proposed Lighting  
 PLOT SCALE = 50,000% / IN.  
 USER NAME = mjg@transys.com

MATCH LINE STATION 1048+00  
 SEE SHEET NO. 168

MATCH LINE STATION 1063+00  
 SEE BELOW LEFT



- NOTES:
- FOR RELOCATED POLE OFFSET DISTANCE REQUIREMENTS, SEE NOTE 8 ON SHEET NO. 161

CONNECT TO EXISTING LIGHTING UNIT

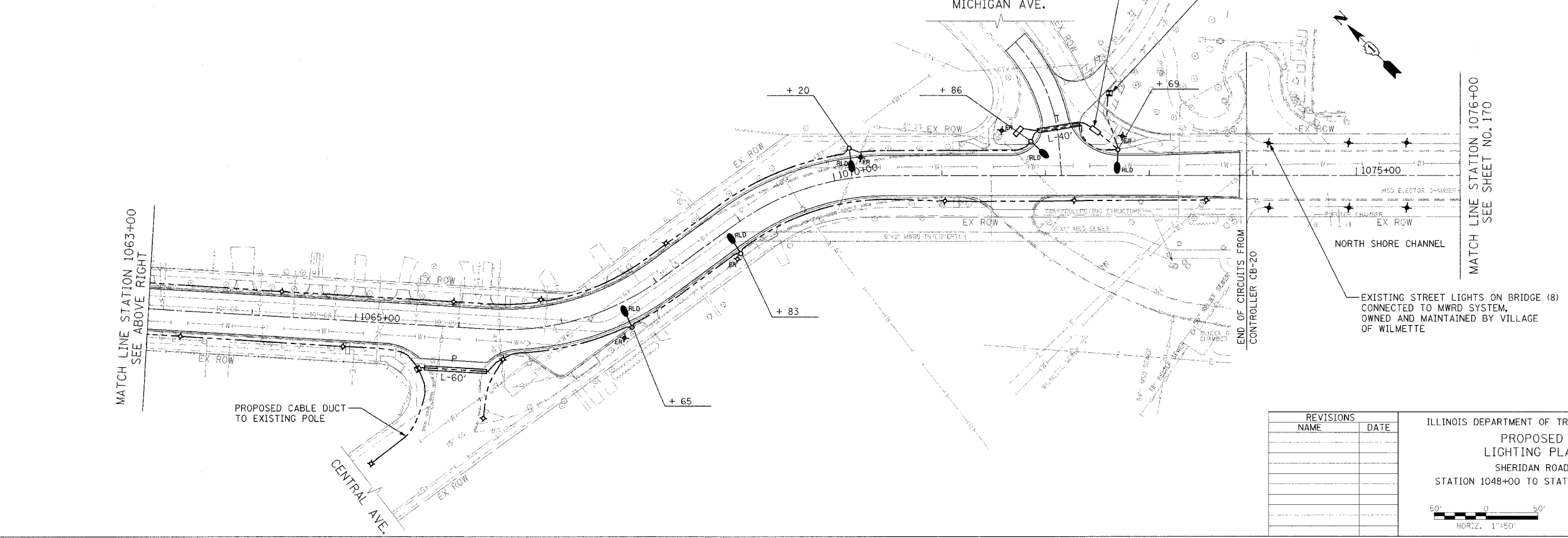
EXISTING CIRCUIT

INSTALL UNIT DUCT TO JUNCTION BOX AT GILLSON PARK SIGN  
 PROVIDE 6' STACK FOR CONNECTION TO SIGN

SPLICE IN HANDHOLE TO EXISTING LIGHTING ALONG BIKE PATH (INCIDENTAL TO COST FOR UNIT DUCT)

MATCH LINE STATION 1063+00  
 SEE ABOVE RIGHT

MATCH LINE STATION 1076+00  
 SEE SHEET NO. 170



PROPOSED CABLE DUCT TO EXISTING POLE

END OF CIRCUITS FROM CONTROLLER CB-20

EXISTING STREET LIGHTS ON BRIDGE (8) CONNECTED TO MWRD SYSTEM, OWNED AND MAINTAINED BY VILLAGE OF WILMETTE

1051 PERIMETER DRIVE, SUITE 1025  
 SCHAMBERG, ILLINOIS 60173  
 (847) 605-9800



REVISIONS	
NAME	DATE

ILLINOIS DEPARTMENT OF TRANSPORTATION  
 PROPOSED LIGHTING PLAN  
 SHERIDAN ROAD  
 STATION 1048+00 TO STATION 1076+00



DATE 7/30/17  
 DRAWN BY AJP  
 CHECKED BY RJG