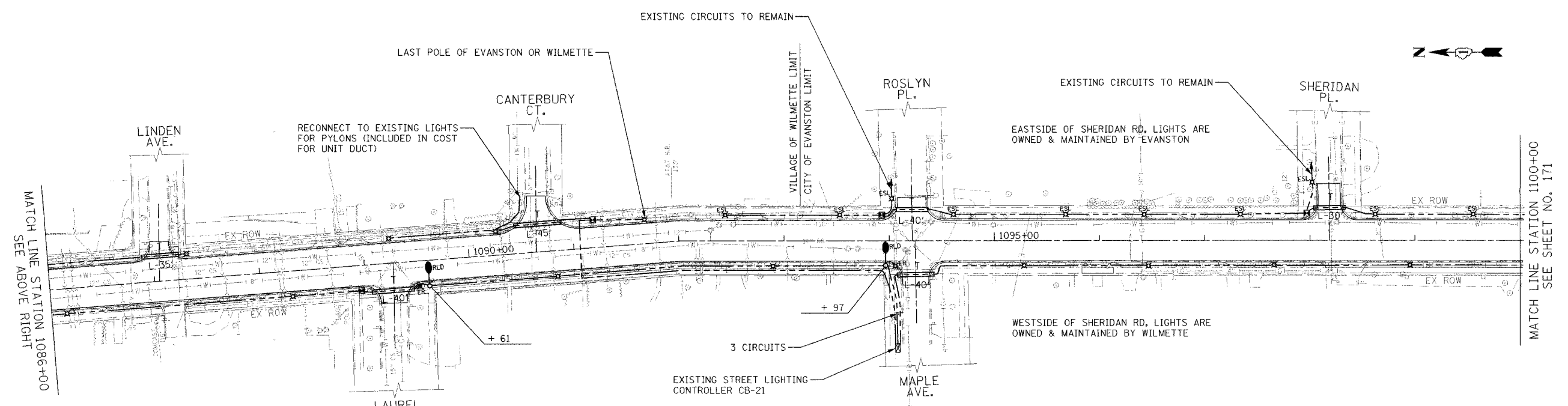
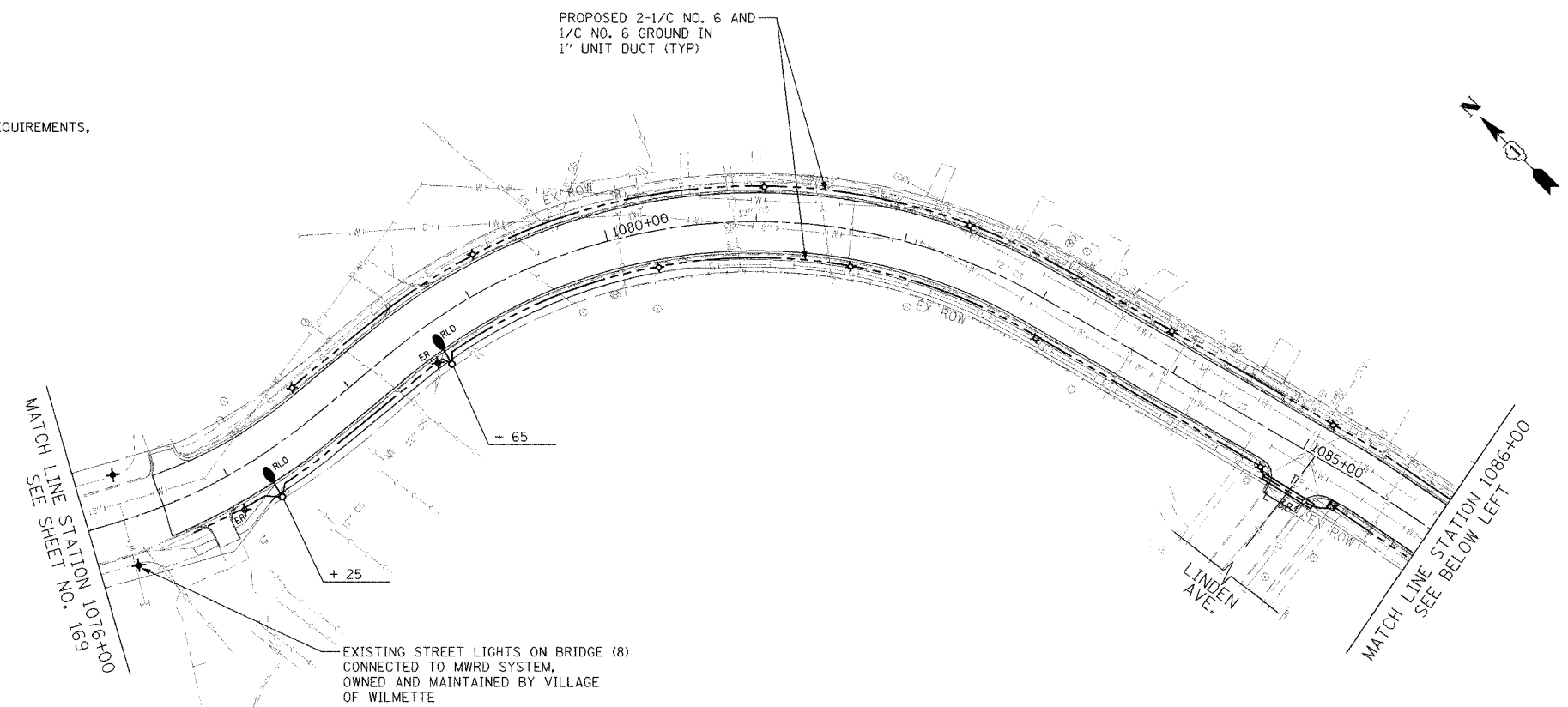


F.A.M. RTE.	SECTION	COUNTY	TOTAL SHEETS	SHEET NO.
3509	00-00173-00-FP	COOK	246	170
STA. 1076+00		TO STA. 1100+00		
FED. ROAD DIST. NO. 7 ILLINOIS FED. AID PROJECT				

PLOT DATE = 8/6/2007
 FILE NAME = D:\A005\0005\wood\sheet\VP-1.dwg
 PLOT SCALE = 840000 / 1
 USER NAME = n.j.gonzalez

- NOTES:
- FOR RELOCATED POLE OFFSET DISTANCE REQUIREMENTS, SEE NOTE 8 ON SHEET NO. 161



1051 PERIMETER DRIVE, SUITE 1025
 SCHAMBERG, ILLINOIS 60173
 (847) 506-9600



REVISIONS	
NAME	DATE

ILLINOIS DEPARTMENT OF TRANSPORTATION
PROPOSED LIGHTING PLAN
 SHERIDAN ROAD
 STATION 1076+00 TO STATION 1100+00

DATE: 7/30/07
 DRAWN BY: AJP
 CHECKED BY: RJG

HORIZ. 1"=50'