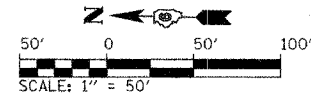


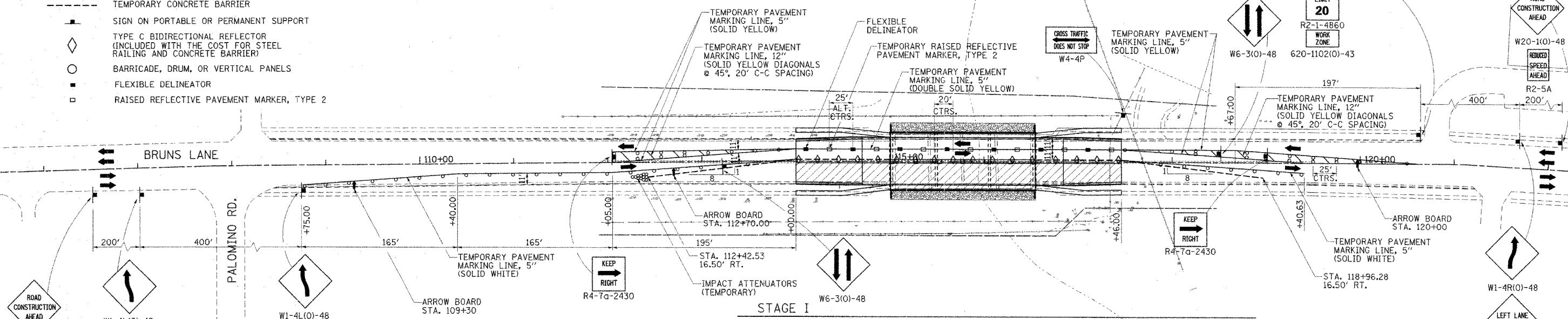
F.A.U. RTE.	SECTION #	COUNTY	TOTAL SHEETS	SHEET NO.
05-00444-00-BR		SANGAMON	33	5
STA.	TO STA.			
FED. ROAD DIST. NO. ILLINOIS FED. AID PROJECT				
*CITY OF SPRINGFIELD				

LEGEND

- WORK AREA
- TEMPORARY CONCRETE BARRIER
- SIGN ON PORTABLE OR PERMANENT SUPPORT
- TYPE C BIDIRECTIONAL REFLECTOR (INCLUDED WITH THE COST FOR STEEL RAILING AND CONCRETE BARRIER)
- BARRICADE, DRUM, OR VERTICAL PANELS
- FLEXIBLE DELINEATOR
- RAISED REFLECTIVE PAVEMENT MARKER, TYPE 2



STAGE I - TRAFFIC CONTROL



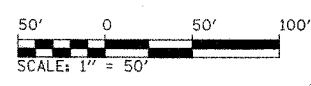
STAGE I - TRAFFIC CONTROL ITEMS

TEMPORARY STEEL RAILING	146	FOOT
TEMPORARY PAVEMENT MARKING - LINE 5"	2,448	FOOT
TEMPORARY PAVEMENT MARKING - LINE 12"	133	FOOT
TEMPORARY CONCRETE BARRIER	312.5	FOOT
TEMPORARY RAISED REFLECTIVE PAVEMENT MARKER	7	EACH
FLEXIBLE DELINEATORS	7	EACH
IMPACT ATTENUATORS (TEMPORARY)	1	EACH

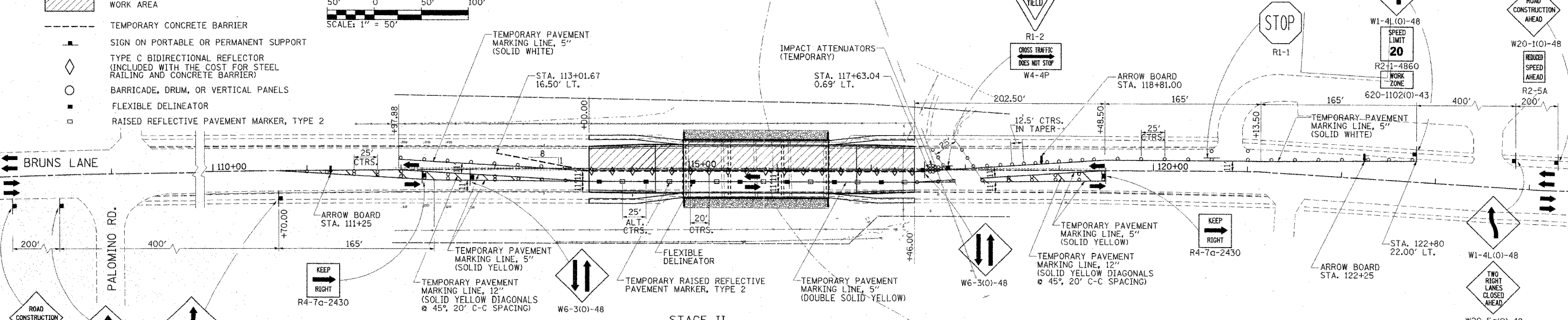
- STAGE I WORK IN STAGE I SHALL CONSIST OF THE FOLLOWING:
1. INSTALLATION OF TEMPORARY STEEL RAILING, CONCRETE BARRIER, ADVANCE WARNING SIGNS, BARRICADES, TEMPORARY IMPACT ATTENUATORS, TEMPORARY PAVEMENT MARKINGS, FLEXIBLE DELINEATORS, AND TYPE C REFLECTORS AS SHOWN ON STAGE I TRAFFIC CONTROL PLAN.
 2. REMOVAL OF EXISTING PAVEMENT MARKING THAT WILL CONFLICT WITH STAGE I TEMPORARY PAVEMENT MARKING.
 3. REMOVAL OF THE SOUTHBOUND BRIDGE DECK, SUBSTRUCTURE AND THE APPROACH PAVEMENTS.
 4. CONSTRUCTION OF THE NEW SOUTHBOUND SUBSTRUCTURE, SUPERSTRUCTURE AND APPROACH PAVEMENTS.

LEGEND

- WORK AREA
- TEMPORARY CONCRETE BARRIER
- SIGN ON PORTABLE OR PERMANENT SUPPORT
- TYPE C BIDIRECTIONAL REFLECTOR (INCLUDED WITH THE COST FOR STEEL RAILING AND CONCRETE BARRIER)
- BARRICADE, DRUM, OR VERTICAL PANELS
- FLEXIBLE DELINEATOR
- RAISED REFLECTIVE PAVEMENT MARKER, TYPE 2



STAGE II - TRAFFIC CONTROL



STAGE II - TRAFFIC CONTROL ITEMS

TEMPORARY PAVEMENT MARKING - LINE 5"	2,506	FOOT
TEMPORARY PAVEMENT MARKING - LINE 12"	131	FOOT
RELOCATE TEMPORARY CONCRETE BARRIER	312.5	FOOT
TEMPORARY CONCRETE BARRIER	150	FOOT
TEMPORARY RAISED REFLECTIVE PAVEMENT MARKER	7	EACH
FLEXIBLE DELINEATORS	7	EACH
RELOCATE IMPACT ATTENUATORS (TEMPORARY)	1	EACH

- STAGE II WORK IN STAGE II SHALL CONSIST OF THE FOLLOWING:
1. REMOVAL OF STAGE I TEMPORARY PAVEMENT MARKINGS, FLEXIBLE DELINEATORS AND TEMPORARY RAISED MARKERS.
 2. RELOCATION AND INSTALLATION OF TEMPORARY CONCRETE BARRIER, ADVANCE WARNING SIGNS, BARRICADES AND TEMPORARY IMPACT ATTENUATORS AS SHOWN ON THE STAGE II TRAFFIC CONTROL PLAN.
 3. INSTALLATION OF THE TEMPORARY PAVEMENT MARKINGS, FLEXIBLE DELINEATORS AND RAISED PAVEMENT MARKINGS.
 4. REMOVAL OF THE NORTHBOUND BRIDGE DECK, SUBSTRUCTURE, AND APPROACH PAVEMENTS.
 5. CONSTRUCTION OF THE NEW NORTHBOUND SUBSTRUCTURE, SUPERSTRUCTURE AND APPROACH PAVEMENTS.
 6. REMOVAL OF ALL TEMPORARY MARKING AND INSTALLATION OF PERMANENT PAVEMENT MARKINGS.

REVISIONS	
NAME	DATE

CITY OF SPRINGFIELD, ILLINOIS

MAINTENANCE OF TRAFFIC

SCALE: NONE
DATE: 6/19/07

DRAWN BY: GLD
CHECKED BY: SPH

L:\Springfield\0502503\Draw\Sheets\MOT_BR-UNSL.dgn 6/12/2007