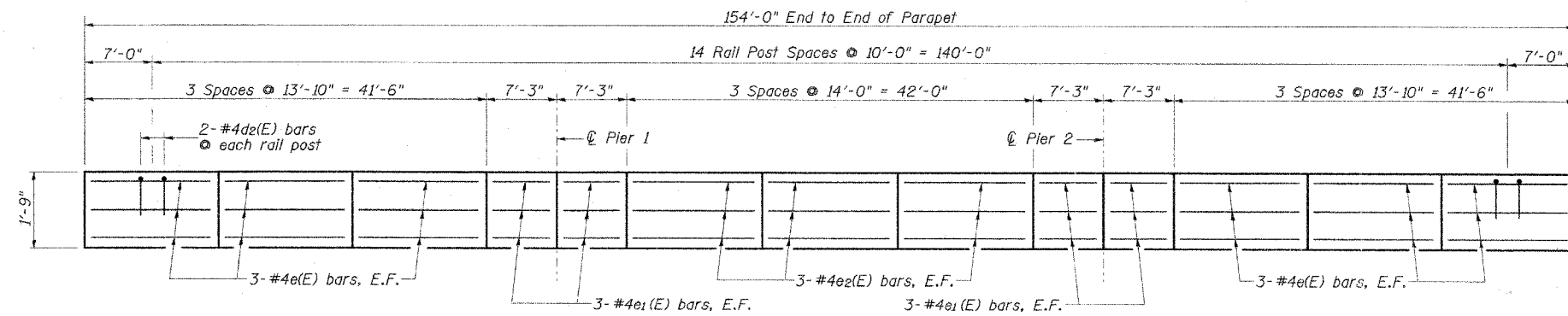
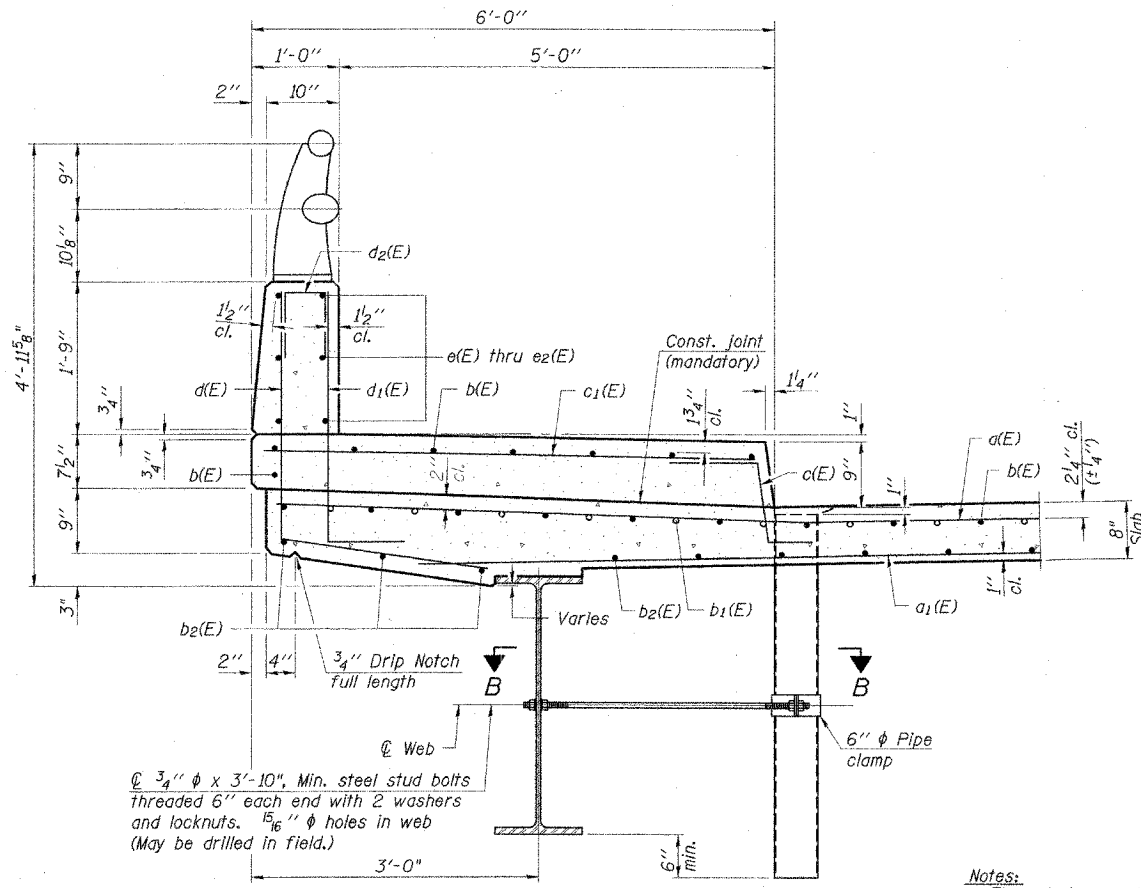


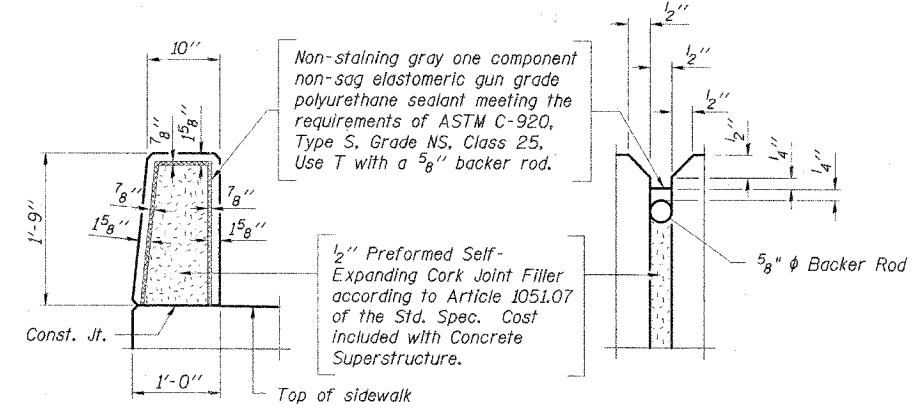
F.A.U. RTE.	SECTION #	COUNTY	TOTAL SHEETS	SHEET NO.
05-00444-00-BR		SANGAMON	33	17
STA.	TO STA.			
FED. ROAD DIST. NO. ILLINOIS FED. AID PROJECT				
CITY OF SPRINGFIELD SHEET 11 OF 24 SHEETS				



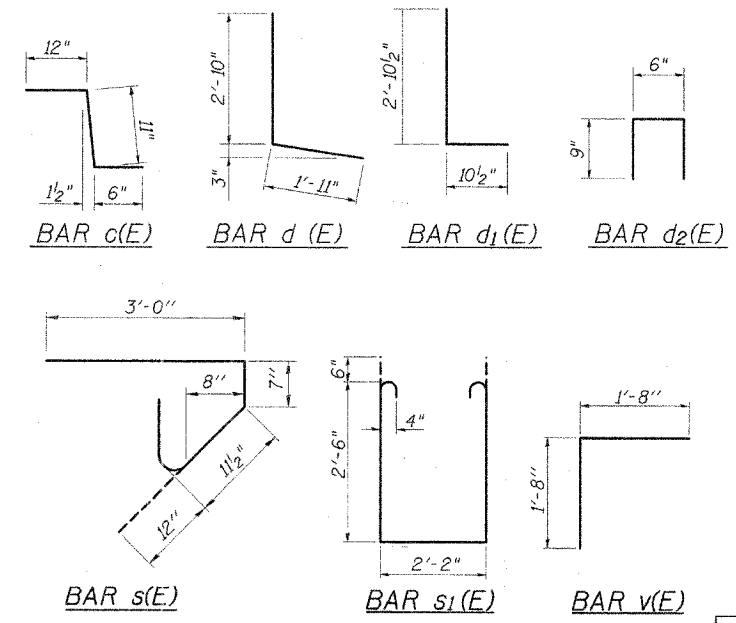
**INSIDE ELEVATION OF PARAPET**  
(East parapet shown, West opposite)



**SECTION THRU SIDEWALK**



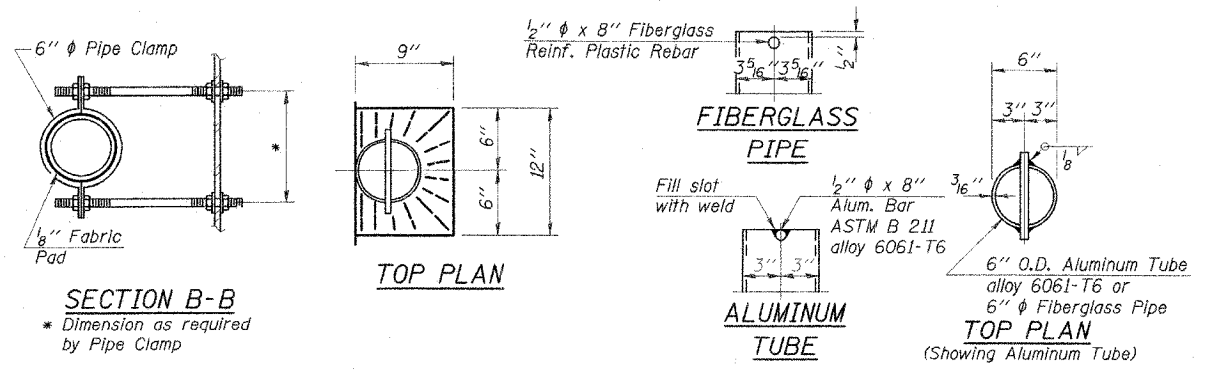
**PARAPET JOINT DETAILS**



**SUPERSTRUCTURE BILL OF MATERIAL**

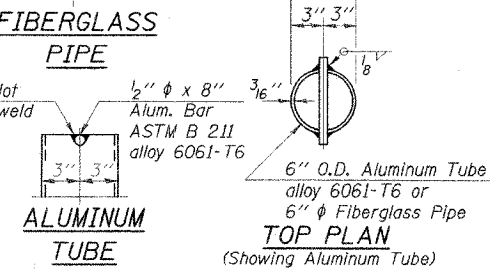
Bar	No.	Size	Length	Shape
a(E)	284	#5	29'-8"	—
a1(E)	284	#5	32'-8"	—
a2(E)	185	#5	29'-2"	—
a3(E)	185	#5	32'-2"	—
b(E)	474	#5	27'-5"	—
b1(E)	122	#6	32'-6"	—
b2(E)	420	#5	23'-10"	—
c(E)	308	#5	2'-5"	┌
c1(E)	308	#5	5'-7"	┌
d(E)	308	#4	4'-9"	┌
d1(E)	308	#6	3'-9"	┌
d2(E)	60	#4	2'-0"	┌
e(E)	72	#4	13'-6"	—
e1(E)	48	#4	6'-11"	—
e2(E)	36	#4	13'-8"	—
m(E)	4	#6	28'-8"	—
m1(E)	4	#6	32'-8"	—
m2(E)	6	#6	28'-8"	—
m3(E)	6	#6	32'-8"	—
m4(E)	40	#6	9'-3"	—
m5(E)	16	#6	6'-0"	—
m6(E)	4	#6	2'-8"	—
m7(E)	2	#6	1'-4"	—
m8(E)	2	#6	4'-4"	—
s(E)	138	#5	5'-7"	┐
s1(E)	122	#4	8'-2"	┐
v(E)	102	#5	3'-4"	┌
Reinforcement Bars, Epoxy Coated		Pound	70,290	
Concrete Superstructure		Cu. Yd.	331.7	
Bar Splicers		Each	587	

**Notes:**  
Floor drains need not be painted.  
Fiberglass pipe shall conform to ASTM D 2996, with short-time rupture strength hoop tensile stress of 30,000 p.s.i. minimum.



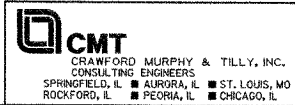
**SECTION B-B**  
\* Dimension as required by Pipe Clamp

**TOP PLAN**



**ALUMINUM TUBE TOP PLAN**  
(Showing Aluminum Tube)

REVISIONS	
NAME	DATE



CITY OF SPRINGFIELD, ILLINOIS  
**PARAPET DETAILS**  
FAU 8006-BRUNS LANE OVER SPRING CREEK  
SECTION 05-00444-00-BR  
SANGAMON COUNTY  
STATION 115+77.50 S.N. 084-6017  
SCALE: NONE DRAWN BY: GLD  
DATE: 6/19/07 CHECKED BY: WK