

MUNICIPALITY	SECTION	COUNTY	TOTAL SHEETS	SHEET NO.
QUINCY	06-00300-00-LS	ADAMS	69	1

INDEX OF SHEETS

- 1 COVER SHEET
- 2 GENERAL NOTES
- 3 LEGEND
- 4-10 SUMMARY OF QUANTITIES
- 11-25 SCHEDULE OF QUANTITIES
- 26-27 TYPICAL SECTIONS
- 28 HORIZONTAL/VERTICAL CONTROL
- 29-35 PLAN AND PROFILE
- 36 INTERSECTION DETAILS - 5TH & MAINE
- 37 INTERSECTION DETAILS - 6TH & MAINE
- 38 INTERSECTION DETAILS - 7TH & MAINE
- 39 INTERSECTION DETAILS - 8TH & MAINE
- 40 INTERSECTION DETAILS - 9TH & MAINE
- 41-42 SIGNAL PLANS - 5TH & MAINE
- 43-44 SIGNAL PLANS - 6TH & MAINE
- 45 SIGNAL PLANS - 7TH & MAINE
- 46-48 SIGNAL PLANS - 8TH & MAINE
- 49-52 LIGHTING CIRCUIT LAYOUT
- 53-54 BASEMENT VAULT DETAILS
- 55-57 PAVEMENT MARKING DETAILS
- 58 MAST ARM DETAILS - 5TH AND MAINE
- 59 ORNAMENTAL LIGHT POLE DETAILS
- 60-66 MISC DETAILS
- 67-69 CROSS SECTIONS - MAINE - 4TH TO 5TH

STATE OF ILLINOIS DEPARTMENT OF TRANSPORTATION DIVISION OF HIGHWAYS

BUREAU OF LOCAL ROADS/STREETS - REGION 4, DISTRICT 6

PROPOSED HIGHWAY PLANS

MAINE STREET BETWEEN 4TH STREET AND 10TH STREET

FAUS ROUTE 7807

JOB # C-96-221-07

QUINCY SECTION 06-00300-00-LS

PROJECT # M-TE-00D6(79)

QUINCY, ADAMS COUNTY, ILLINOIS

STATE OF ILLINOIS TRANSPORTATION ENHANCEMENT PROGRAM

LIST OF STANDARDS

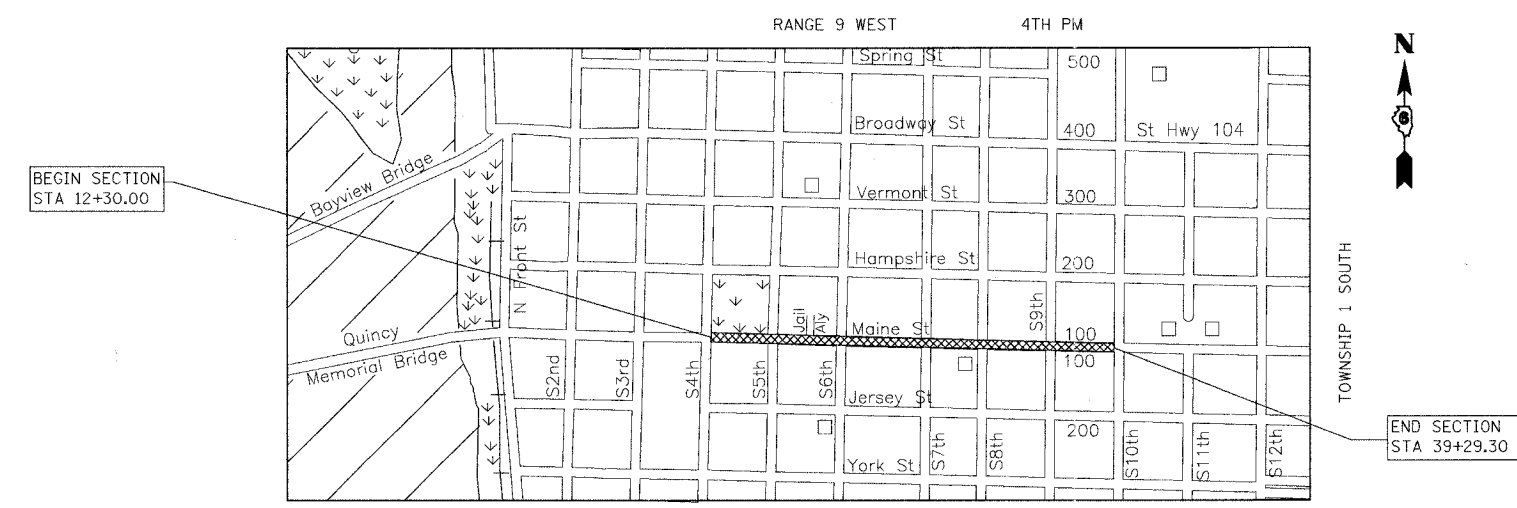
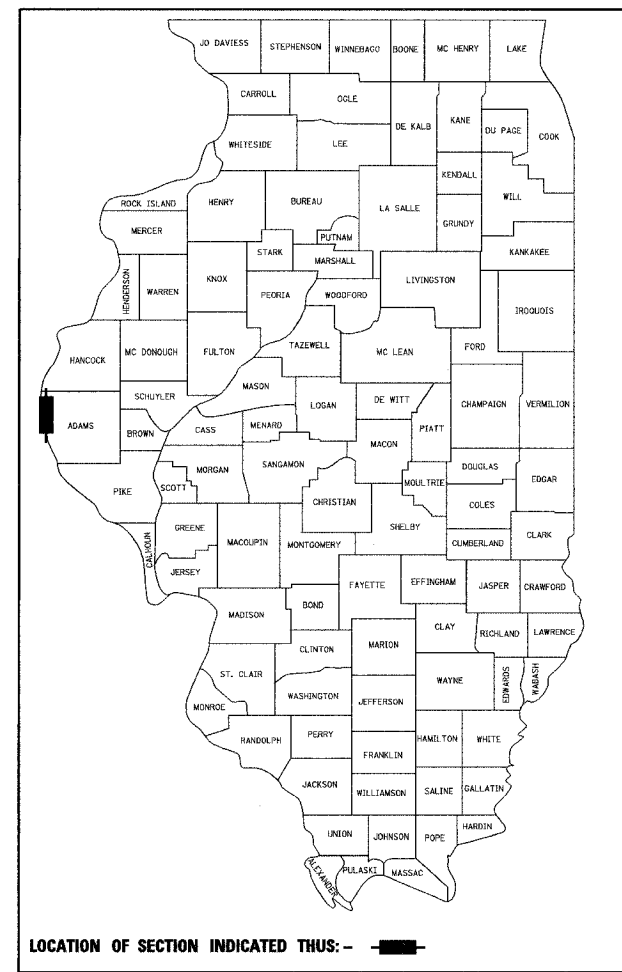
- 424001-04 CURB RAMPS FOR SIDEWALKS
- 602401-01 MANHOLE, TYPE A
- 602701-01 MANHOLE STEPS
- 604001-02 FRAME AND LIDS, TYPE 1
- 606001-03 CONCRETE CURB TYPE B AND COMBINATION CONCRETE CURB AND GUTTER
- 701606-04 URBAN LANE CLOSURE, MULTILANE, 2W WITH MOUNTABLE MEDIAN
- 701701-04 URBAN LANE CLOSURE, MULTILANE INTERSECTION
- 701801-03 LANE CLOSURE MULTILANE, 1W OR 2W CROSSWALK OR SIDEWALK CLOSURE
- 702001-06 TRAFFIC CONTROL DEVICES
- 720006-01 SIGN PANEL ERECTION DETAILS
- 720011 METAL POSTS FOR SIGNS, MARKERS AND DELINEATORS
- 780001-01 TYPICAL PAVEMENT MARKINGS
- 729001 APPLICATIONS OF TYPES A AND B METAL POSTS (FOR SIGNS AND MARKERS)
- 814001-01 HANDHOLES
- 814006-01 DOUBLE HANDHOLES
- 873001-01 TRAFFIC SIGNAL GROUNDING & BONDING
- 877001-02 STEEL MAST ARM ASSEMBLY AND POLE
- 877011-02 STEEL COMBINATION MAST ARM ASSEMBLY AND POLE
- 878001-05 CONCRETE FOUNDATION DETAILS
- 880006 TRAFFIC SIGNAL MOUNTING DETAILS

DESIGN STANDARDS

ROADWAY CLASSIFICATION - URBAN COLLECTOR
 2006 ADT - 8,000
 2026 ADT - 8,000
 DESIGN SPEED - 30 MPH
 POSTED SPEED - 25 MPH
 DESIGN GUIDELINES - URBAN

UTILITY COMPANIES

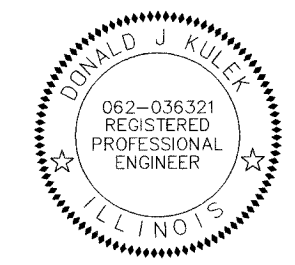
GAS & ELECTRIC - AMERENCIPS
 WATER & SEWER - CITY OF QUINCY
 TELEPHONE - AT+T
 CABLEVISION - INSIGHT



LENGTH OF PROJECT

MAINE STREET	STA 39+29.30
END IMPROVEMENTS	STA 12+30.00
BEGIN IMPROVEMENTS	STA 12+30.00
NET LENGTH OF IMPROVEMENT	2699.30 FT = 0.511 MILE

PLANS PREPARED BY:
PSBA POEPPING, STONE, BACH & ASSOCIATES, INC.
 100 SOUTH 54TH STREET QUINCY, ILLINOIS 62306
 PH: (217) 223-4605 FAX: (217) 223-1546
 E-MAIL: PSBA@PSBA.COM WWW.PSBA.COM



DONALD J. KULEK
 LICENSED PROFESSIONAL ENGINEER
 QUINCY, ILLINOIS
 EXPIRES: 11/30/07
Donald J. Kulek 8/16/07
 SIGNATURE DATE

APPROVED	AUGUST 9 th 20 07	<i>Jeffrey H. Steinbramp</i>	QUINCY CITY ENGINEER
APPROVED	AUGUST 14 th 20 07	<i>Tom J. ...</i>	DISTRICT 6 ENGINEER OF LOCAL ROADS AND STREETS
APPROVED	AUGUST 14 th 20 07	<i>He ...</i>	DISTRICT 6 ENGINEER OF CONSTRUCTION
RELEASED FOR BID BASED UPON LIMITED REVIEW	AUGUST 14 th 20 07	<i>Christine M. Reed</i>	DEPUTY DIRECTOR OF HIGHWAYS, REGION 4 ENGINEER

**STATE OF ILLINOIS
DEPARTMENT OF TRANSPORTATION**

J.U.L.I.E.
 JOINT UTILITY LOCATION INFORMATION FOR EXCAVATION
 1-800-892-0123