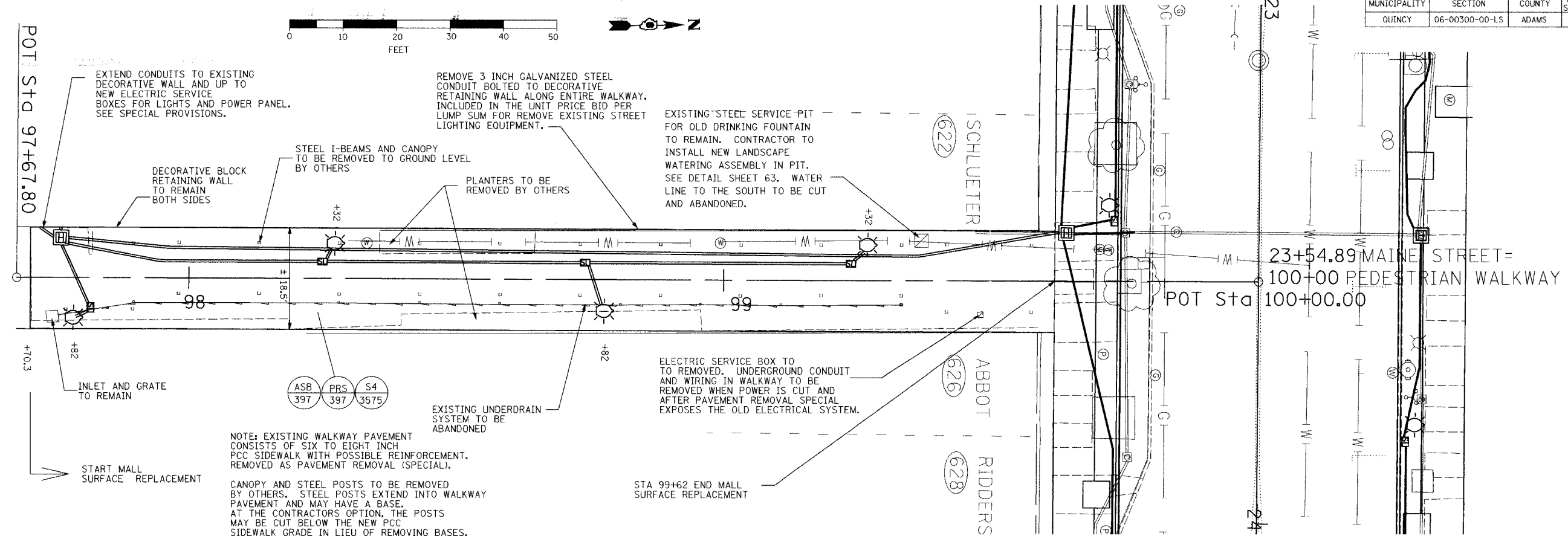
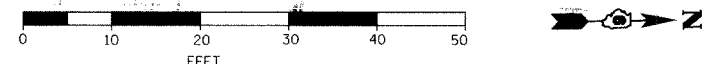


MUNICIPALITY	SECTION	COUNTY	TOTAL SHEETS	SHEET NO.
QUINCY	06-00300-00-LS	ADAMS	69	35



REMOVE 3 INCH GALVANIZED STEEL CONDUIT BOLTED TO DECORATIVE RETAINING WALL ALONG ENTIRE WALKWAY. INCLUDED IN THE UNIT PRICE BID PER LUMP SUM FOR REMOVE EXISTING STREET LIGHTING EQUIPMENT.

EXISTING STEEL SERVICE PIT FOR OLD DRINKING FOUNTAIN TO REMAIN. CONTRACTOR TO INSTALL NEW LANDSCAPE WATERING ASSEMBLY IN PIT. SEE DETAIL SHEET 63. WATER LINE TO THE SOUTH TO BE CUT AND ABANDONED.

DECORATIVE BLOCK RETAINING WALL TO REMAIN BOTH SIDES

STEEL I-BEAMS AND CANOPY TO BE REMOVED TO GROUND LEVEL BY OTHERS

PLANTERS TO BE REMOVED BY OTHERS

INLET AND GRATE TO REMAIN

ELECTRIC SERVICE BOX TO BE REMOVED. UNDERGROUND CONDUIT AND WIRING IN WALKWAY TO BE REMOVED WHEN POWER IS CUT AND AFTER PAVEMENT REMOVAL SPECIAL EXPOSES THE OLD ELECTRICAL SYSTEM.

EXISTING UNDERDRAIN SYSTEM TO BE ABANDONED

NOTE: EXISTING WALKWAY PAVEMENT CONSISTS OF SIX TO EIGHT INCH PCC SIDEWALK WITH POSSIBLE REINFORCEMENT. REMOVED AS PAVEMENT REMOVAL (SPECIAL).

CANOPY AND STEEL POSTS TO BE REMOVED BY OTHERS. STEEL POSTS EXTEND INTO WALKWAY PAVEMENT AND MAY HAVE A BASE. AT THE CONTRACTORS OPTION, THE POSTS MAY BE CUT BELOW THE NEW PCC SIDEWALK GRADE IN LIEU OF REMOVING BASES.

STA 99+62 END MALL SURFACE REPLACEMENT

PLAN	REVISION	DATE
NO.	BY	DATE

PROFILE	REVISION	DATE
NO.	BY	DATE

