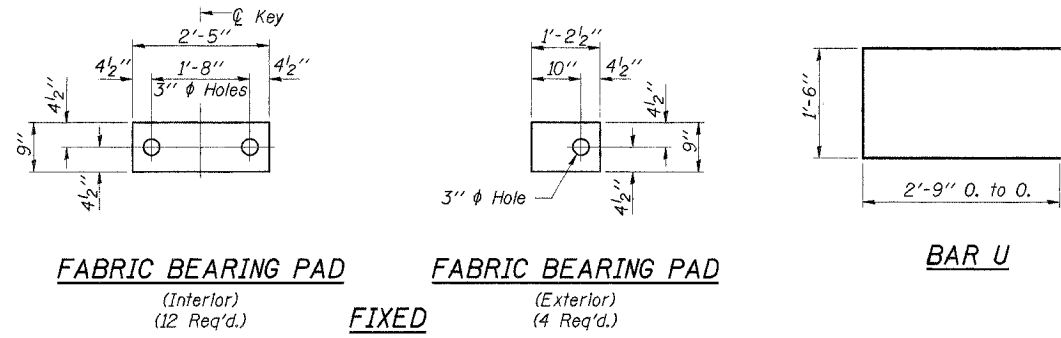


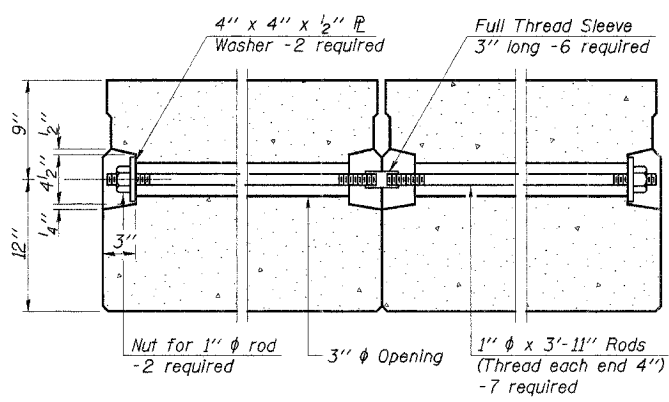
| ROUTE NO. | SECTION | COUNTY | TOTAL SHEETS | SHEET NO. |
|--------------------|----------------|----------|--------------|-----------|
| T.R. 325 | 99-04128-00-BR | CLAY | 13 | 6 |
| ROAD DIST. | | ILLINOIS | HARTER | |
| CONTRACT NO. 95523 | | | | |



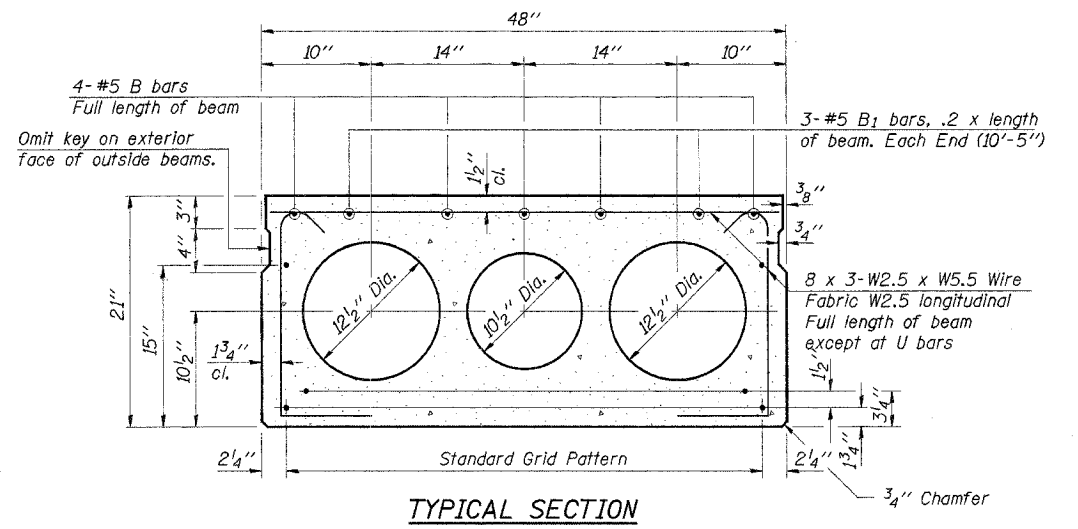
FABRIC BEARING PAD
(Interior)
(12 Req'd.)

FABRIC BEARING PAD
(Exterior)
(4 Req'd.)

BAR U



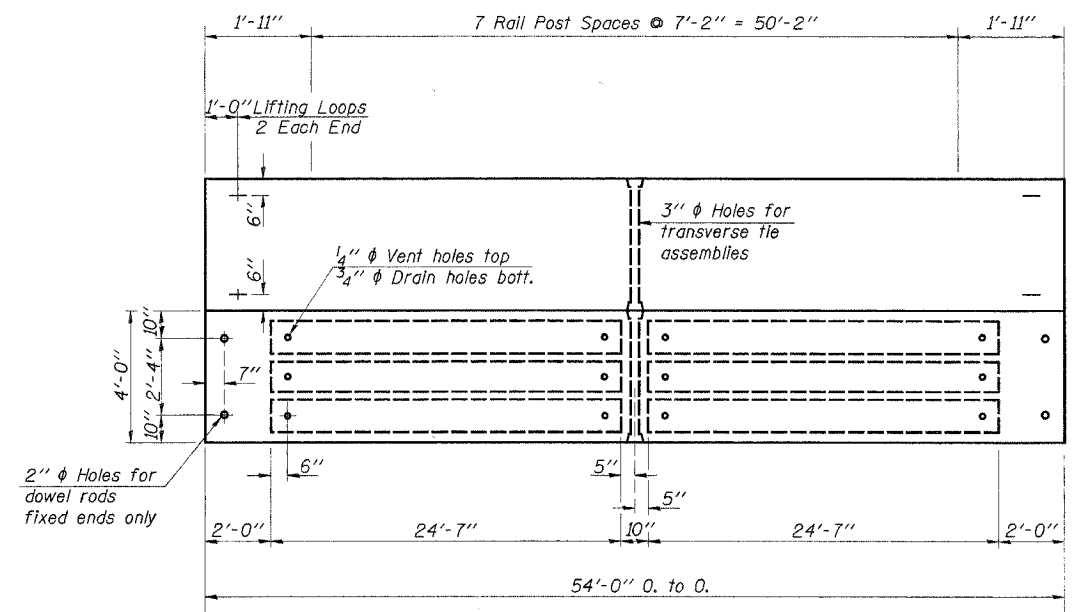
TYPICAL TRANSVERSE TIE ASSEMBLY



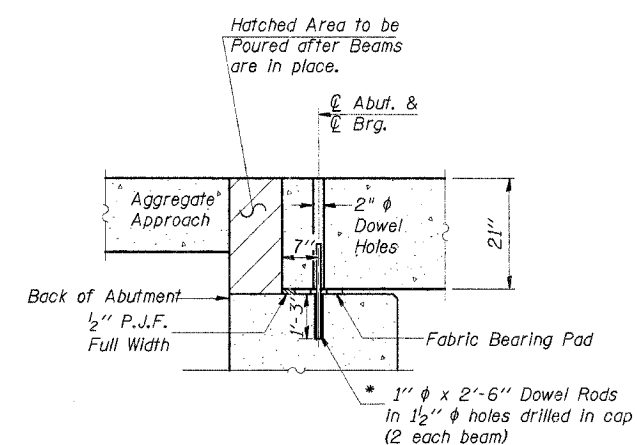
TYPICAL SECTION

21-1/2" ϕ Strands, Each Strand Stressed to 30,900 Lbs.
13-Strands 1 3/4" up, 6-Strands 3/4" up, 2-Strands 15" up.

Note: Place strands symmetrically about ϕ of beam.

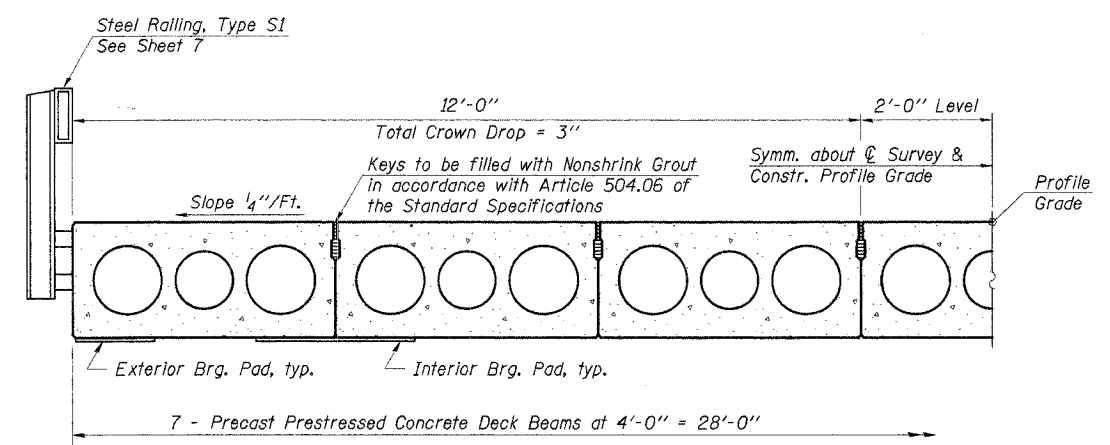


PLAN

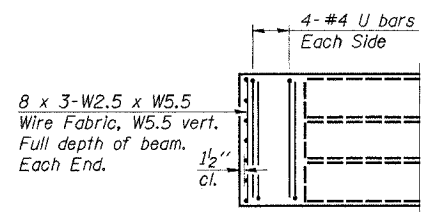


SEC. THRU ABUT.

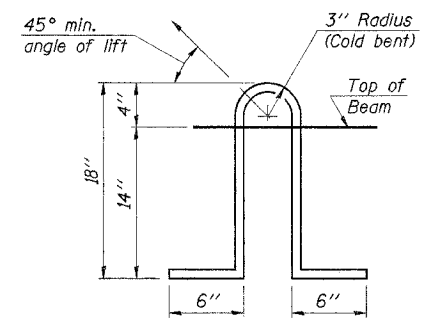
* Dowel Rods to be grouted after beams are in place and allowed to cure (Min. 24 hrs.) prior to grouting the shear keys.



HALF CROSS SECTION



END PLAN



LIFTING LOOP DETAIL

NOTES

Prestressing steel shall be uncoated high strength, low relaxation 7-wire strand, Grade 270. The nominal diameter shall be 5/8" and the nominal cross-sectional area shall be 0.153 sq. in. Lifting loops shall be 3-1/2" ϕ 270 ksi strands, as shown. The 1" ϕ rods in the transverse tie assembly shall be tightened to a snug fit and the threads set. Pockets that receive transverse tie bar on outside shall be filled with grout after transverse tie assembly is in place. Non prestressing steel shall conform to AASHTO M-31 or M-322, Grade 60. The bearing seat surfaces shall be adjusted by shimming to assure firm and even bearing. Two 1/8" fabric adjusting shims of the dimensions of the Exterior Bearing Pad shall be provided for each bearing. (32 Req'd.) Keyway surfaces shall be cleaned to remove form oil or other bond breaking material prior to shipment of the beams. Cleaning shall be done by sandblasting the keyway areas between top of the beam and the bottom edge of the key. Required Release Strength, f'ci, shall be 4,000 p.s.i. See Special Provisions for review and distribution of shop drawings. Rail post anchor devices shall be cast into outside beam as elsewhere specified.

BILL OF MATERIAL

| Item | Unit | Quantity |
|---|---------|----------|
| Precast Prestressed Concrete Deck Beams (21" Depth) | Sq. Ft. | 1,512 |

Estimated Total Weight (One Beam) = 41,200 Pounds

| | |
|----------|--------|
| DESIGNED | F.J.S. |
| CHECKED | S.F.M. |
| DRAWN | S.A.P. |
| CHECKED | S.F.M. |
| PD-4-S | 9-1-03 |

SUPERSTRUCTURE

SECTION 99-04128-00-BR
HARTER ROAD DISTRICT
CLAY COUNTY
STATION 50+00

| | | |
|--|---|--|
| 4440 ASH GROVE SPRINGFIELD, IL 62711 (217) 793-8800 www.fehr-graham.com | FEHR-GRAHAM & ASSOCIATES, LLC ENGINEERING AND SCIENCE CONSULTANTS | JOB NO.: 46861 FILE: 46861SUPER.DGN DATE: 07/05/07 |
|--|---|--|