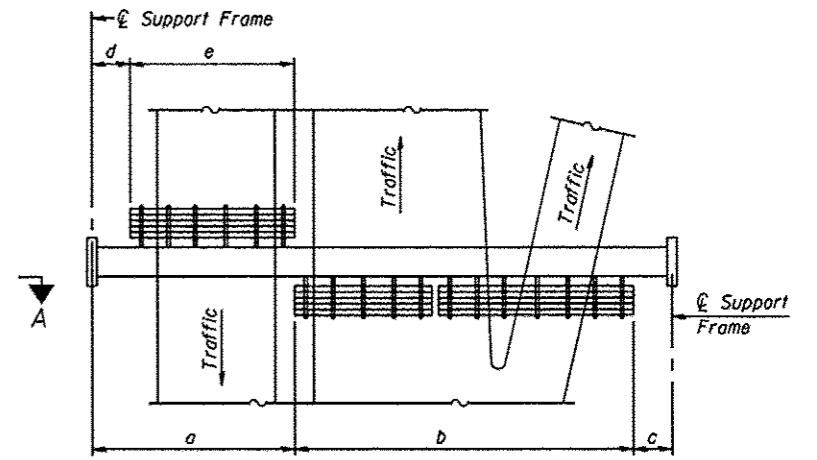


TYPICAL FRONT ELEVATION
 With lights and handrail omitted for clarity.
 For Section B-B, see Base Sheet OS-A-10.

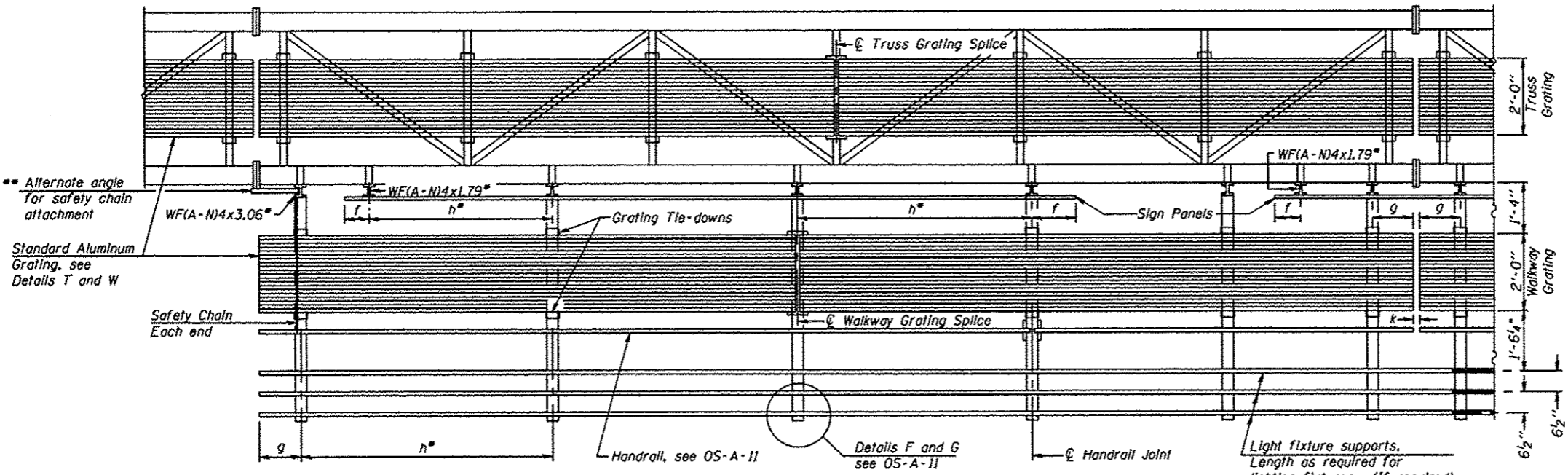


PLAN
WALKWAY AND HANDRAIL SKETCH
 (Road plan beneath truss varies)

BRACKET TABLE

WF(A-N)4x1.79 or WF(A-N)4x3.06 ASTM B308, Alloy 6061-T6		
Sign Width		Number Brackets Required
Greater Than	Less Than or Equal To	
	8'-0"	2
8'-0"	14'-0"	3
14'-0"	20'-0"	4
20'-0"	26'-0"	5
26'-0"	32'-0"	6

- Notes:**
- Space walkway brackets WF(A-N)4x3.06 and sign brackets WF(A-N)4x1.79 for efficiency and within limits shown:
 - f = 12" maximum, 4" minimum (End of sign to ϕ of nearest bracket)
 - g = 12" maximum, 4" minimum (End of walkway grating to ϕ of nearest support bracket)
 - h = 6'-0" maximum (ϕ to ϕ sign and/or walkway support brackets, WF(A-N)4x1.79 or WF(A-N)4x3.06)
 - k = 2" maximum gap between adjacent walkway grating sections and handrail ends
 - If walkway bracket at safety chain location is behind sign, add angle to bracket, see Alternate Safety Chain Attachment on Base Sheet OS-A-11.
- For Details T and W, Section B-B and Grating Splice Details see Base Sheet OS-A-10.
 For Handrail Details see Base Sheet OS-A-11.



SECTION A-A

Handrail and walkway shall span a minimum of three brackets between splices and/or gap joints. Place all sign and walkway brackets as close to panel points as practical. Handrail joints, grating, and light support splices placed as needed.

Structure Number	Station	a	b	c	d	e	Walkway Grating and Handrail Lengths
2S0371074L015.2	636 + 75	26'-0"	42'-0"	18'-0"			42'-0"
2S0371074R012.7	896 + 74	2'-0"	46'-0"	2'-0"			46'-0"

Truss grating to facilitate inspection shall run full length (center to center of support frames) $\pm 12"$ on overhead trusses. Cost of truss grating is included in "Overhead Sign Structure".

Walkway and Truss Grating width dimensions are nominal and may vary $\pm 1/2"$ based on available standard widths.

OS-A-9

1-20-11

FILE NAME *	USER NAME *	DESIGNED -	REVISED -
		CHECKED -	REVISED -
PLOT SCALE *		DRAWN -	REVISED -
PLOT DATE *		CHECKED -	REVISED -

STATE OF ILLINOIS
 DEPARTMENT OF TRANSPORTATION

OVERHEAD SIGN STRUCTURES
 ALUMINUM WALKWAY DETAILS

F.A. RTE.	SECTION	COUNTY	TOTAL SHEETS	SHEET NO.
Various D-2 DVD SIN STR REPL 13-01		Various	25	17
CONTRACT NO. 46214				
ILLINOIS FED. AID PROJECT				