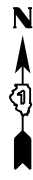
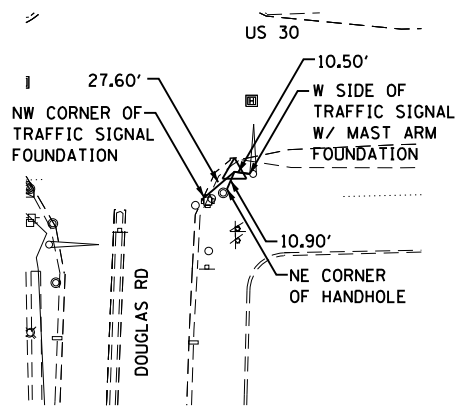
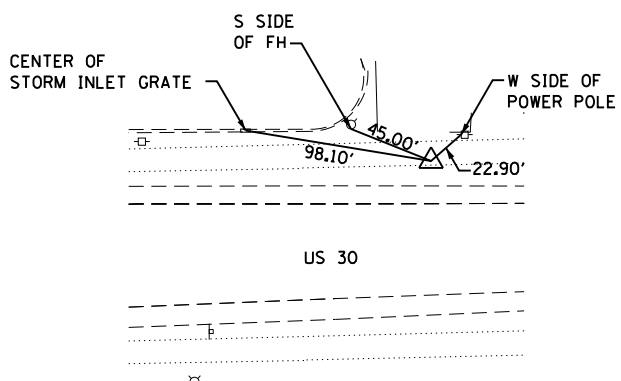


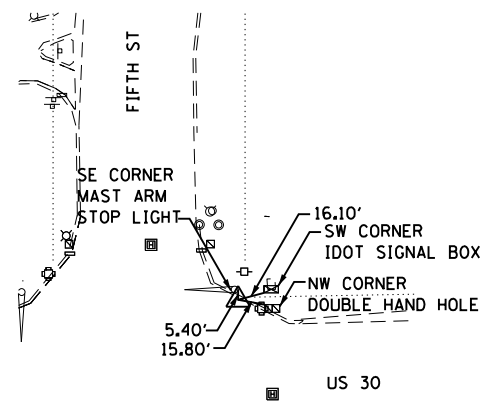
CP 50
REBAR W/ CAP
NORTHING: 1,840,332.638
EASTING: 988,130.719
ELEV.: 673.86
STA.: 359+77
OFF.: 42.59'



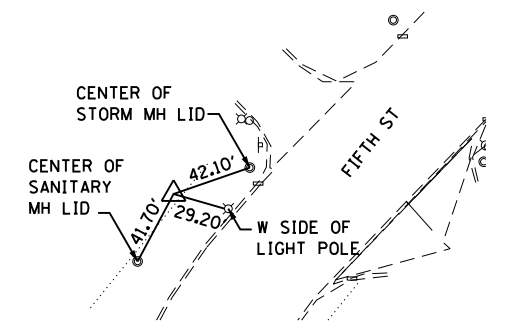
CP 55
REBAR W/ CAP
NORTHING: 1,840,436.337
EASTING: 988,867.448
ELEV.: 670.12
STA.: 367+16
OFF.: 45.80'



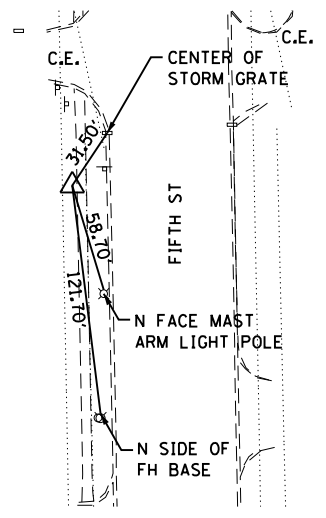
CP 60
REBAR W/ CAP
NORTHING: 1,840,449.331
EASTING: 989,606.645
ELEV.: 670.50
STA.: 374+55
OFF.: 43.46'



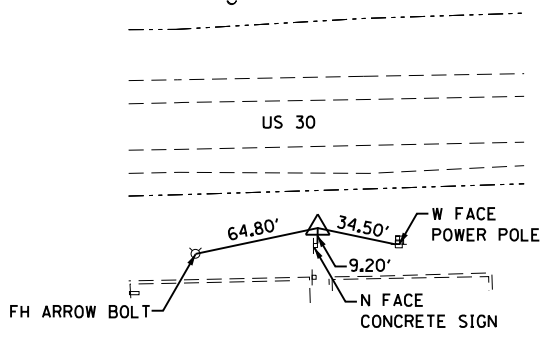
CP 61
REBAR W/ CAP
NORTHING: 1,840,799.890
EASTING: 989,573.438
ELEV.: 671.50
STA.: 374+29
OFF.: 394.63'



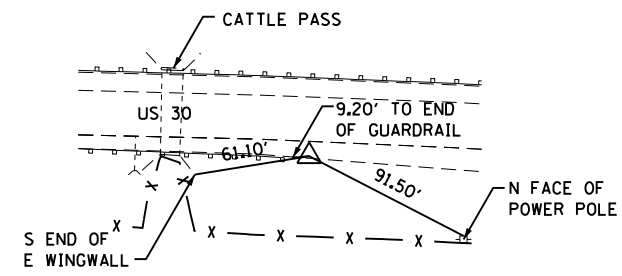
CP 62
REBAR W/ CAP
NORTHING: 1,840,114.275
EASTING: 989,511.448
ELEV.: 669.22
STA.: 502+64
OFF.: 50.96'



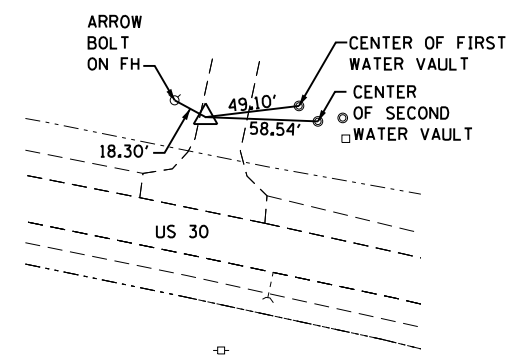
CP 65
REBAR W/ CAP
NORTHING: 1,840,376.223
EASTING: 990,802.238
ELEV.: 667.48
STA.: 386+49
OFF.: 54.44'



CP 70
REBAR W/ CAP
NORTHING: 1,840,425.540
EASTING: 992,089.933
ELEV.: 675.85
STA.: 399+38
OFF.: 19.17'



CP 75
REBAR W/ CAP
NORTHING: 1,840,348.530
EASTING: 993,376.527
ELEV.: 669.43
STA.: 412+23
OFF.: 59.56'



FILE NAME = s:\p1\6300--6395\6346\023\micro\sh1\0180132-sh1-ATB01.dgn

STRAND
ENGINEERS
1170 SOUTH HOUBOLT ROAD
JOLIET, ILLINOIS 60431
(815) 744-4200

USER NAME = amanda.j
DESIGNED MAG
DRAWN B.J.F.
CHECKED S.J.N.
DATE 3/31/10
PLOT SCALE = 100.0000' / 1" =
PLOT DATE = 4/26/2012

DESIGNED MAG
DRAWN B.J.F.
CHECKED S.J.N.
DATE 3/31/10

REVISED -
REVISED -
REVISED -
REVISED -

STATE OF ILLINOIS
DEPARTMENT OF TRANSPORTATION

CONTROL POINT TIES

SCALE: AS SHOWN SHEET NO. OF SHEETS STA. TO STA.

F.A.P. RTE.	SECTION	COUNTY	TOTAL SHEETS	SHEET NO.
349	11 WRS-3	KENDALL	527	69
CONTRACT NO. 60132				
FED. ROAD DIST. NO. 1 ILLINOIS FED. AID PROJECT				