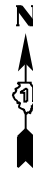
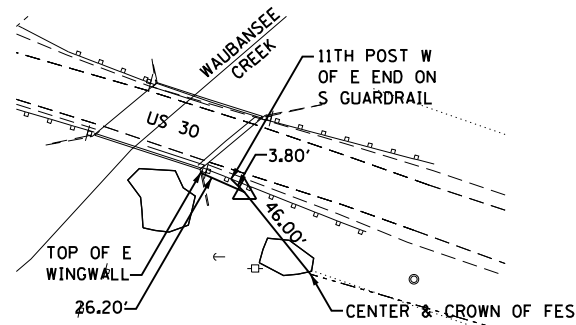


CP 80

REBAR W/ CAP

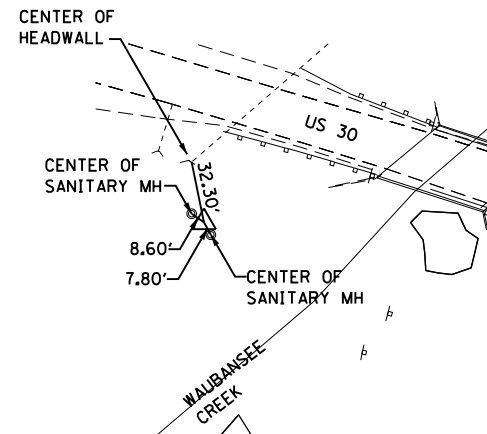
NORTHING: 1,840,051.691
 EASTING: 994,176.150
 ELEV.: 669.25
 STA.: 420+71
 OFF.: 21.53'



CP 83

REBAR W/ CAP

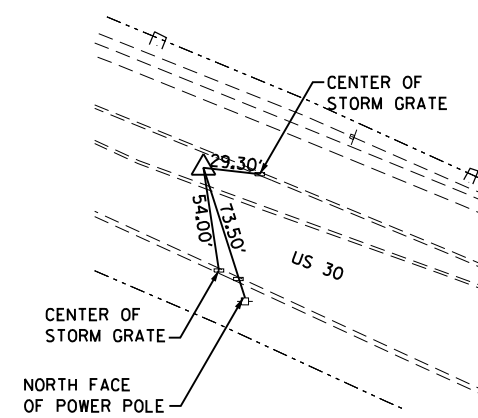
NORTHING: 1,840,058.103
 EASTING: 994,007.737
 ELEV.: 662.36
 STA.: 419+07
 OFF.: 66.01'



CP 85

REBAR W/ CAP

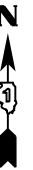
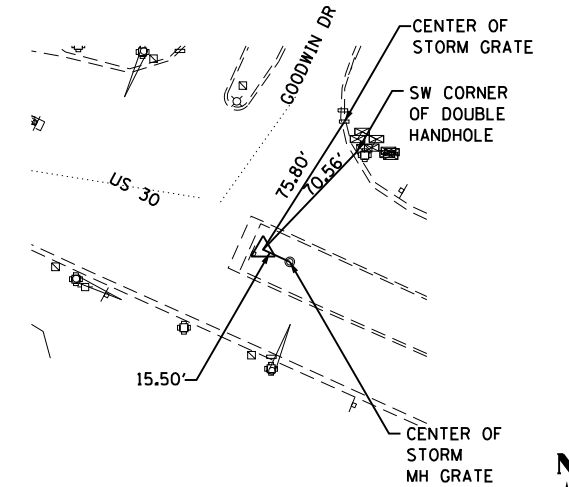
NORTHING: 1,839,805.182
 EASTING: 994,871.689
 ELEV.: 668.28
 STA.: 428+10
 OFF.: 4.12'



CP 90

REBAR W/ CAP

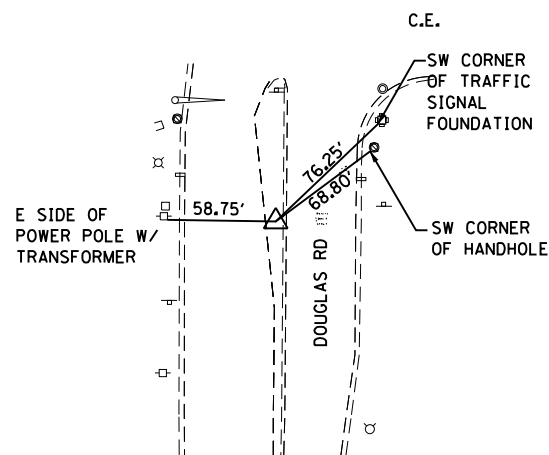
NORTHING: 1,839,515.609
 EASTING: 995,511.705
 ELEV.: 675.08
 STA.: 435+12
 OFF.: 1.17'



CP 200

PK NAIL IN MEDIAN

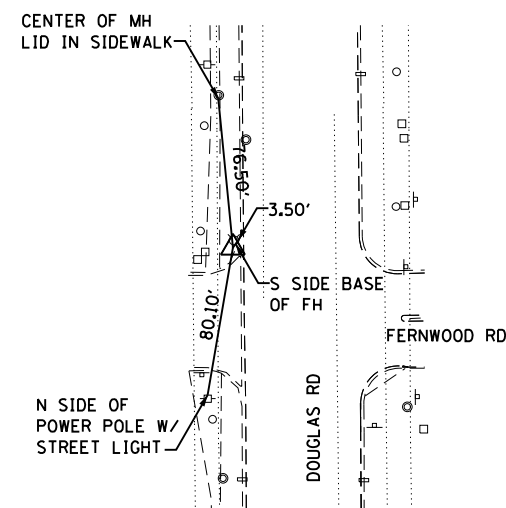
NORTHING: 1,839,813.193
 EASTING: 988,071.683
 ELEV.: 672.55
 STA.: 205+04
 OFF.: 2.77'



CP 205

REBAR W/ CAP

NORTHING: 1,840,856.253
 EASTING: 988,049.406
 ELEV.: 669.16
 STA.: 215+48
 OFF.: 35.70'



BENCHMARKS

BM 6: NW BONET BOLT ON FH W OF AGGREGATE ENTRANCE AT KENDALL POINT BUSINESS CENTER
 STA. 401+49.35, 55.78' RT, EL. 671.60

BM 6.5: FH ARROW BOLT BETWEEN WELL HOUSE ENTRANCE AND BRIDGE ON N SIDE OF US 30.
 STA. 412+05.86, 64.98' LT, EL. 666.14

BM 7: FH ARROW BOLT W OF WELL HOUSE ENTRANCE ON N SIDE OF US 30.
 STA. 417+55.87, 65.95' LT, EL. 671.47

FILE NAME = s:\p\16300-6395\6346\023\micro\sh\168132-sh\168132.dgn



USER NAME = amanda.j
 PLOT SCALE = 100.0000' / 1" =
 PLOT DATE = 4/26/2012

DESIGNED MAG
 DRAWN BJF
 CHECKED SJN
 DATE 3/31/10

REVISED -
 REVISED -
 REVISED -
 REVISED -

**STATE OF ILLINOIS
 DEPARTMENT OF TRANSPORTATION**

CONTROL POINT TIES AND BENCHMARKS

SCALE: AS SHOWN SHEET NO. OF SHEETS STA. TO STA.

F.A.P. RTE.	SECTION	COUNTY	TOTAL SHEETS	SHEET NO.
349	11 WRS-3	KENDALL	527	70
CONTRACT NO. 60132				
FED. ROAD DIST. NO. 1 ILLINOIS FED. AID PROJECT				