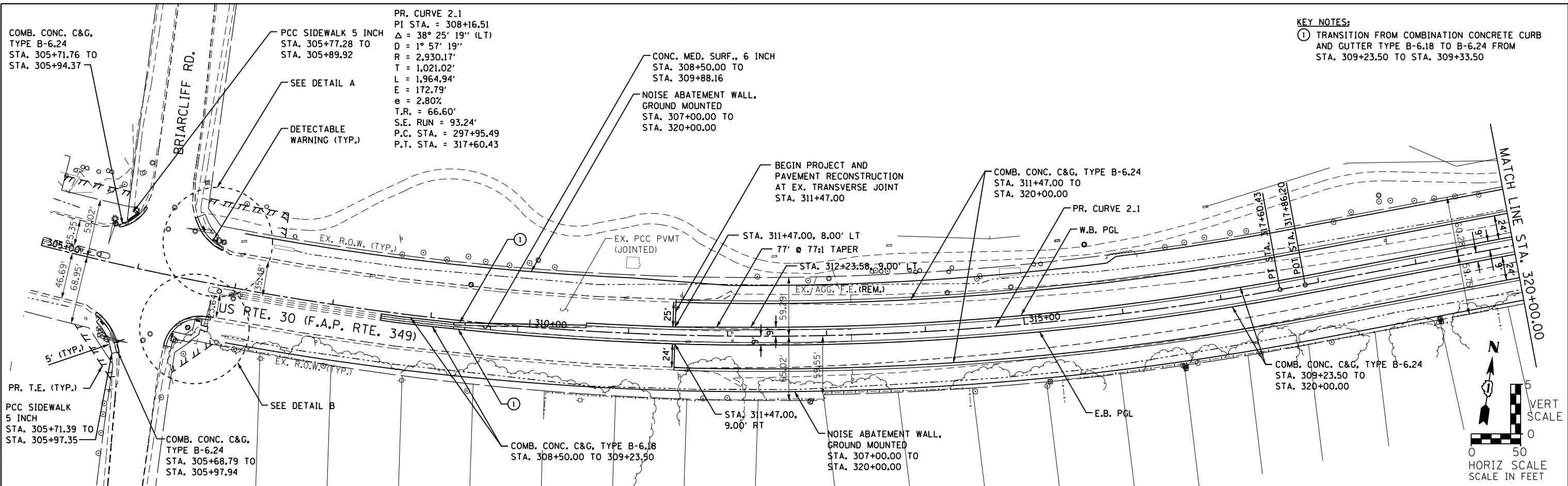
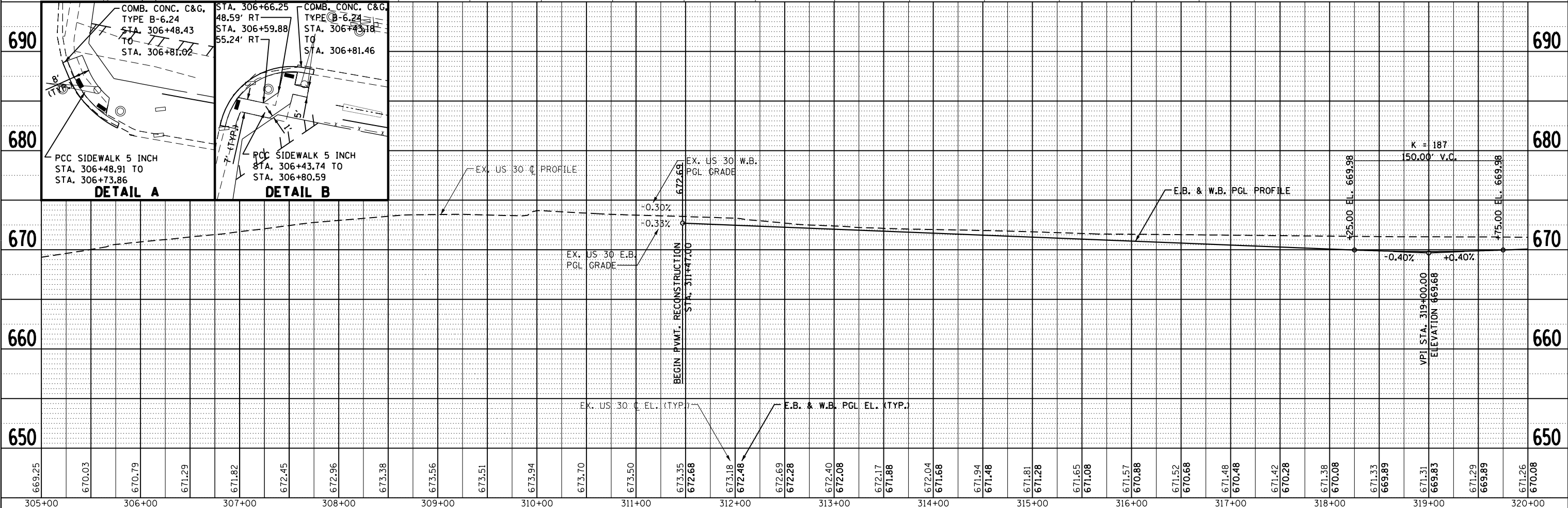
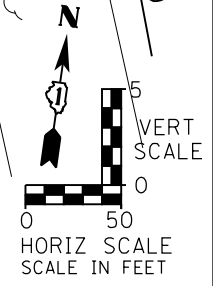


PLAN	SURVEYED	DATE
	PLOTTED	BY
	ALIGNED	CHECKED
	FILED	NO.
	NO. 1	NO. 2
	NO. 3	NO. 4
	NO. 5	NO. 6
	NO. 7	NO. 8
	NO. 9	NO. 10
	NO. 11	NO. 12
	NO. 13	NO. 14
	NO. 15	NO. 16
	NO. 17	NO. 18
	NO. 19	NO. 20
	NO. 21	NO. 22
	NO. 23	NO. 24
	NO. 25	NO. 26
	NO. 27	NO. 28
	NO. 29	NO. 30
	NO. 31	NO. 32
	NO. 33	NO. 34
	NO. 35	NO. 36
	NO. 37	NO. 38
	NO. 39	NO. 40
	NO. 41	NO. 42
	NO. 43	NO. 44
	NO. 45	NO. 46
	NO. 47	NO. 48
	NO. 49	NO. 50
	NO. 51	NO. 52
	NO. 53	NO. 54
	NO. 55	NO. 56
	NO. 57	NO. 58
	NO. 59	NO. 60
	NO. 61	NO. 62
	NO. 63	NO. 64
	NO. 65	NO. 66
	NO. 67	NO. 68
	NO. 69	NO. 70
	NO. 71	NO. 72
	NO. 73	NO. 74
	NO. 75	NO. 76
	NO. 77	NO. 78
	NO. 79	NO. 80
	NO. 81	NO. 82
	NO. 83	NO. 84
	NO. 85	NO. 86
	NO. 87	NO. 88
	NO. 89	NO. 90
	NO. 91	NO. 92
	NO. 93	NO. 94
	NO. 95	NO. 96
	NO. 97	NO. 98
	NO. 99	NO. 100

PROFILE	SURVEYED	DATE
	PLOTTED	BY
	GRADES	CHECKED
	STRUCTURE	NOTATIONS
	NO.	NO.
	NO. 1	NO. 2
	NO. 3	NO. 4
	NO. 5	NO. 6
	NO. 7	NO. 8
	NO. 9	NO. 10
	NO. 11	NO. 12
	NO. 13	NO. 14
	NO. 15	NO. 16
	NO. 17	NO. 18
	NO. 19	NO. 20
	NO. 21	NO. 22
	NO. 23	NO. 24
	NO. 25	NO. 26
	NO. 27	NO. 28
	NO. 29	NO. 30
	NO. 31	NO. 32
	NO. 33	NO. 34
	NO. 35	NO. 36
	NO. 37	NO. 38
	NO. 39	NO. 40
	NO. 41	NO. 42
	NO. 43	NO. 44
	NO. 45	NO. 46
	NO. 47	NO. 48
	NO. 49	NO. 50
	NO. 51	NO. 52
	NO. 53	NO. 54
	NO. 55	NO. 56
	NO. 57	NO. 58
	NO. 59	NO. 60
	NO. 61	NO. 62
	NO. 63	NO. 64
	NO. 65	NO. 66
	NO. 67	NO. 68
	NO. 69	NO. 70
	NO. 71	NO. 72
	NO. 73	NO. 74
	NO. 75	NO. 76
	NO. 77	NO. 78
	NO. 79	NO. 80
	NO. 81	NO. 82
	NO. 83	NO. 84
	NO. 85	NO. 86
	NO. 87	NO. 88
	NO. 89	NO. 90
	NO. 91	NO. 92
	NO. 93	NO. 94
	NO. 95	NO. 96
	NO. 97	NO. 98
	NO. 99	NO. 100



KEY NOTES:
 ① TRANSITION FROM COMBINATION CONCRETE CURB AND GUTTER TYPE B-6.18 TO B-6.24 FROM STA. 309+23.50 TO STA. 309+33.50



669.25	670.03	670.79	671.29	671.82	672.45	672.96	673.38	673.56	673.51	673.94	673.70	673.50	673.35	672.66	673.18	672.48	672.69	672.28	672.40	672.08	672.17	671.88	672.04	671.68	671.94	671.48	671.81	671.28	671.65	671.08	671.57	670.88	671.52	670.68	671.48	670.48	671.42	670.28	671.38	670.08	671.33	669.89	671.31	669.83	671.29	669.89	671.26	670.08
305+00	306+00	307+00	308+00	309+00	310+00	311+00	312+00	313+00	314+00	315+00	316+00	317+00	318+00	319+00	320+00																																	

STRAND ENGINEERS
 1170 SOUTH HOUBOLT ROAD
 JOLIET, ILLINOIS 60431
 (815) 744-4200

USER NAME = amandaj	DESIGNED - MAG	REVISD -
PLOT SCALE = 100.0000' / 1"	CHECKED - SUN	REVISD -
PLOT DATE = 5/10/2012	DRAWN - BJF	REVISD -
	CHECKED - SUN	REVISD -

STATE OF ILLINOIS
 DEPARTMENT OF TRANSPORTATION

SCALE: AS SHOWN	SHEET NO.	OF	SHEETS	STA. 305+00 TO STA. 320+00
-----------------	-----------	----	--------	----------------------------

F.A.P. RTE. 349	SECTION 11 WRS-3	COUNTY KENDALL	TOTAL SHEETS 527	SHEET NO. 77
CONTRACT NO. 60132				
FED. ROAD DIST. NO. 1 ILLINOIS FED. AID PROJECT				