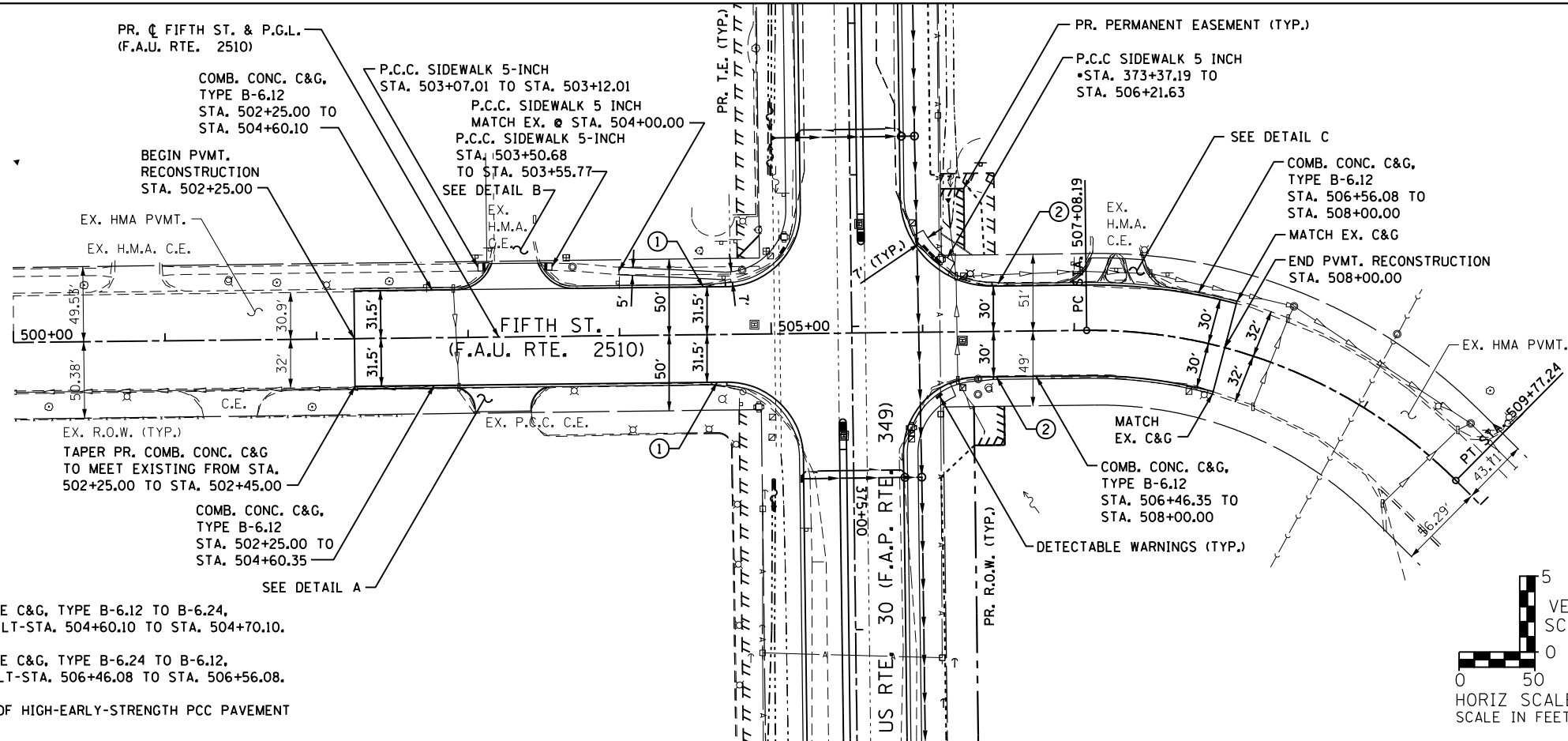


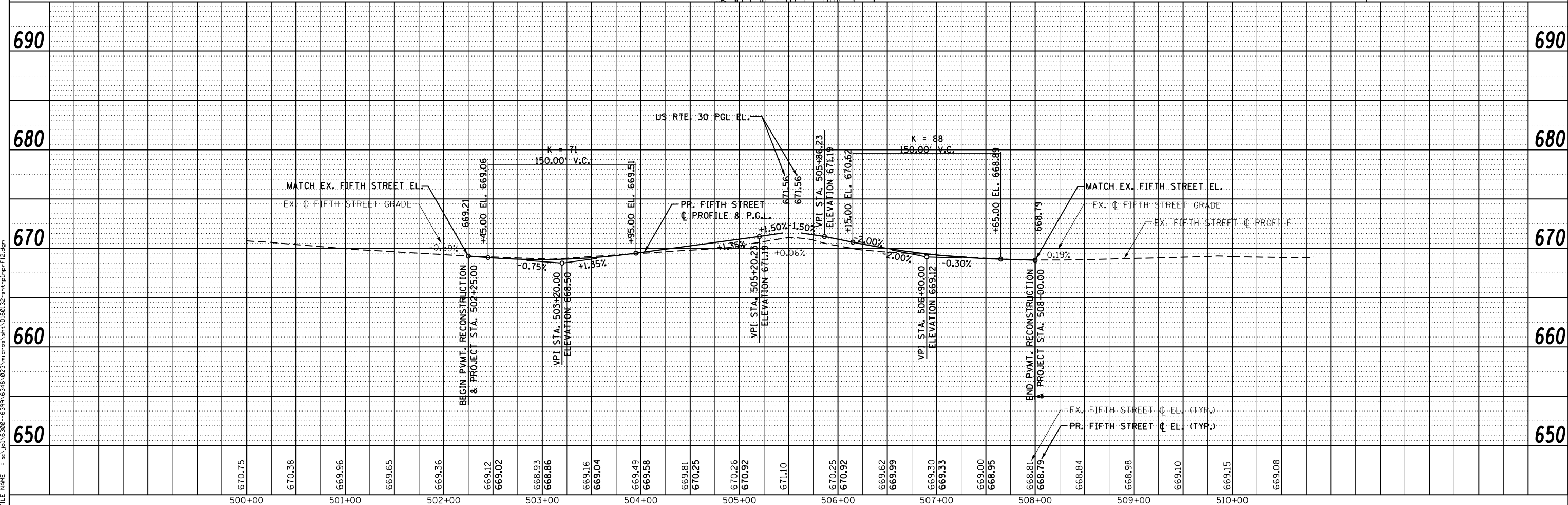
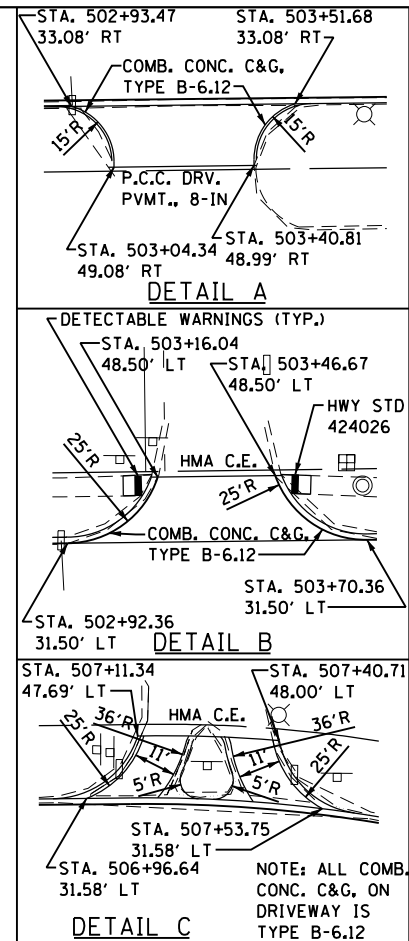
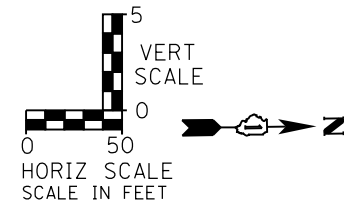
PLAN	SURVEYED	DATE
	PLOTTED	
	NOTE BOOK	
	NO.	
	CHECKED	
	FILE NAME	

PROFILE	SURVEYED	DATE
	PLOTTED	
	NOTE BOOK	
	NO.	
	CHECKED	
	FILE NAME	

FILE NAME = s:\proj\63300-63999\6346\023\microstation\01680132-ahh\p1\pr12.dgn



- NOTES:**
- TRANSITION FROM COMBINATION CONCRETE C&G, TYPE B-6.12 TO B-6.24, RT-STA. 504+60.35 TO STA. 504+70.35, LT-STA. 504+60.10 TO STA. 504+70.10.
 - TRANSITION FROM COMBINATION CONCRETE C&G, TYPE B-6.24 TO B-6.12, RT-STA. 506+36.35 TO STA. 506+46.35, LT-STA. 506+46.08 TO STA. 506+56.08.
 - REFER TO MOT SHEETS FOR LOCATIONS OF HIGH-EARLY-STRENGTH PCC PAVEMENT 9 1/2" (JOINTED)



STRAND ASSOCIATES, INC.
1170 SOUTH HOUBOLT ROAD
JOLIET, ILLINOIS 60431
(815) 744-4200

USER NAME = amandaj	DESIGNED -	REVISED -
	CHECKED -	REVISED -
PLOT SCALE = 100.0000' / 1"	DRAWN -	REVISED -
PLOT DATE = 5/10/2012	CHECKED -	REVISED -

**STATE OF ILLINOIS
DEPARTMENT OF TRANSPORTATION**

FIFTH PLAN AND PROFILE

SCALE: AS SHOWN

SHEET NO.	OF	SHEETS	STA. 500+00 TO STA. 510+00
-----------	----	--------	----------------------------

F.A.P. RTE.	SECTION	COUNTY	TOTAL SHEETS	SHEET NO.
349	11 WRS-3	KENDALL	527	88
CONTRACT NO. 60132				
FED. ROAD DIST. NO. ILLINOIS FED. AID PROJECT				