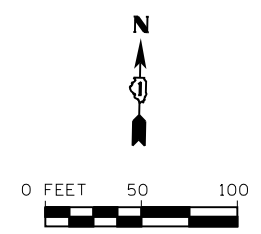
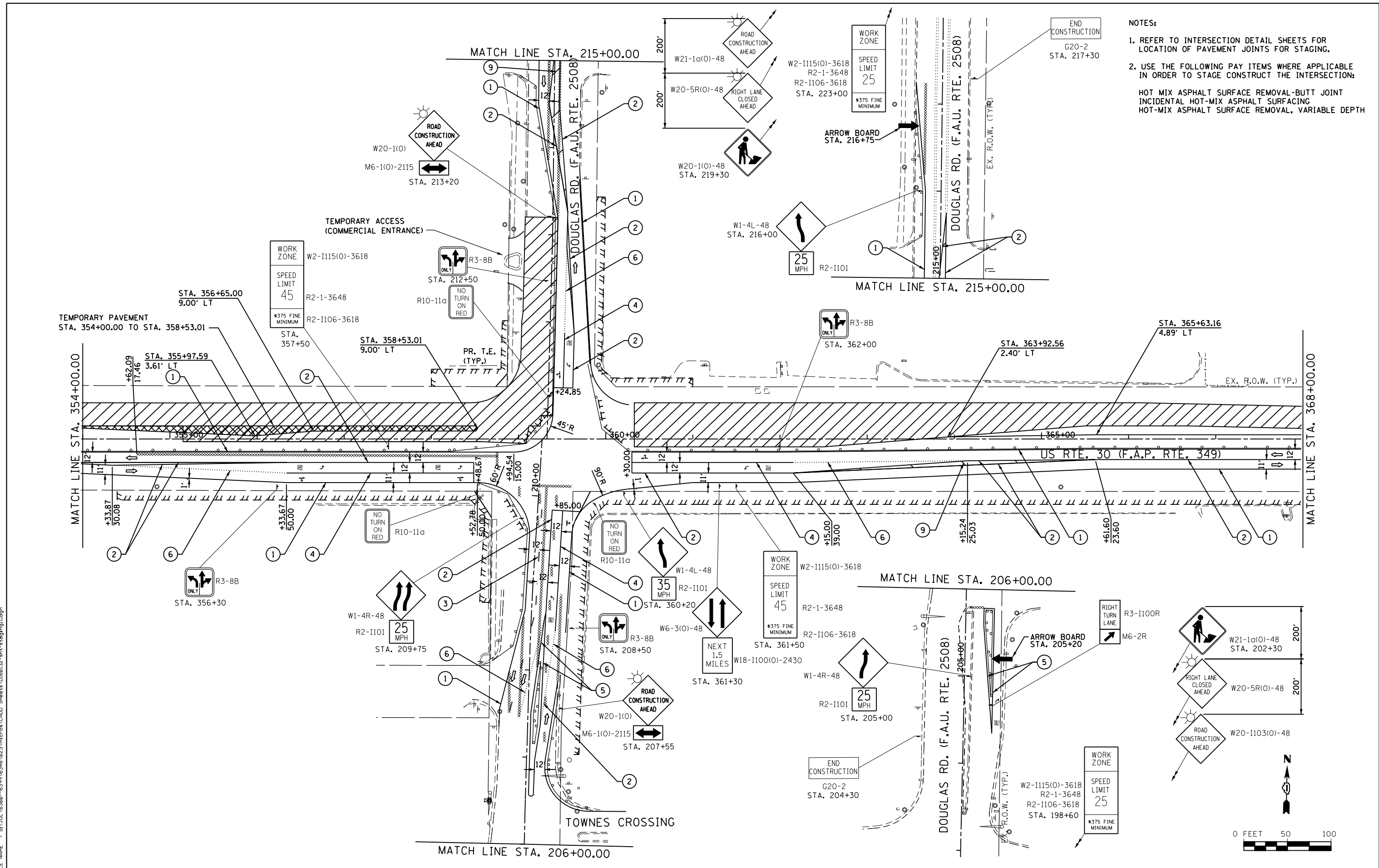


- NOTES:**
- REFER TO INTERSECTION DETAIL SHEETS FOR LOCATION OF PAVEMENT JOINTS FOR STAGING.
  - USE THE FOLLOWING PAY ITEMS WHERE APPLICABLE IN ORDER TO STAGE CONSTRUCT THE INTERSECTION:
- HOT MIX ASPHALT SURFACE REMOVAL-BUTT JOINT  
 INCIDENTAL HOT-MIX ASPHALT SURFACING  
 HOT-MIX ASPHALT SURFACE REMOVAL, VARIABLE DEPTH



FILE NAME = SA\JOL\6300-6399\6346\023\Micro\CAD\ Sheets\0160132-sht-staging1.dgn

**STRAND**  
 ENGINEERS  
 1170 SOUTH HOUBOLT ROAD  
 JOLIET, ILLINOIS 60431  
 (815) 744-4200

USER NAME = amanda.j  
 DESIGNED -  
 DRAWN -  
 PLOT SCALE = 100.0000' / 1" =  
 CHECKED -  
 DATE -  
 PLOT DATE = 8/1/2012

DESIGNED -  
 DRAWN -  
 CHECKED -  
 DATE -  
 REVISED -  
 REVISED -  
 REVISED -  
 REVISED -

**STATE OF ILLINOIS  
 DEPARTMENT OF TRANSPORTATION**

**MAINTENANCE OF TRAFFIC  
 STAGE 1**

SCALE: AS SHOWN SHEET NO. OF SHEETS STA. 354+00.00 TO STA. 368+00.00

F.A.P. RTE.	SECTION	COUNTY	TOTAL SHEETS	SHEET NO.
349	11 WRS-3	KENDALL	527	105
CONTRACT NO. 60132				
FED. ROAD DIST. NO. 1 ILLINOIS FED. AID PROJECT				