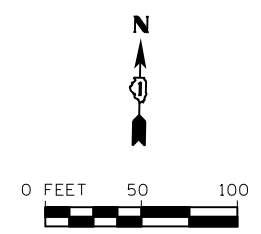
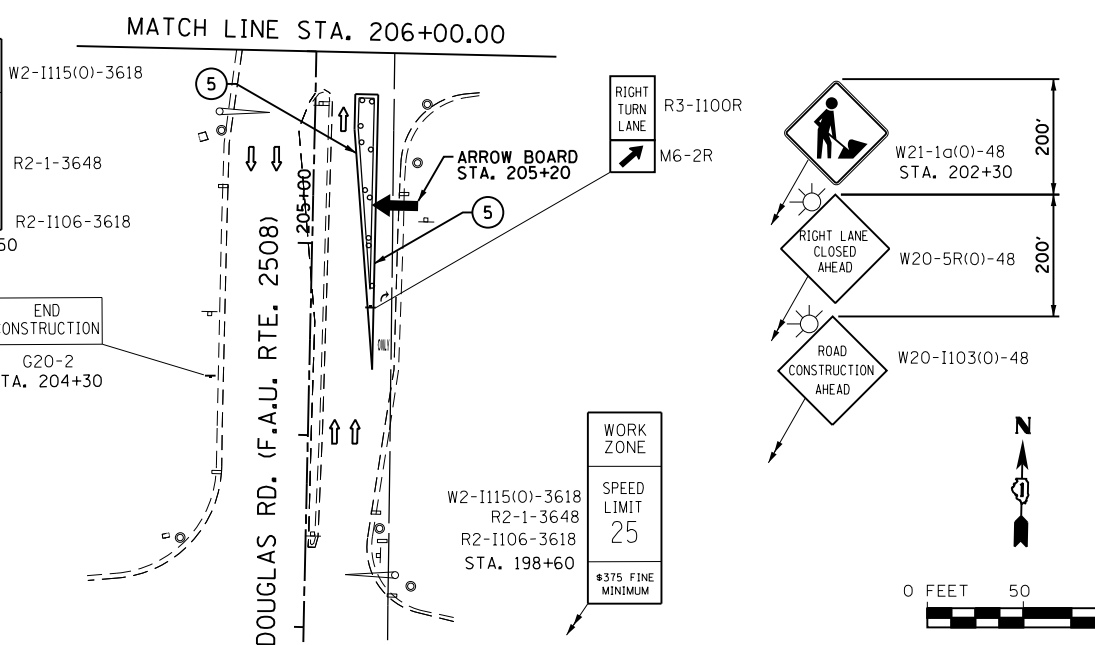
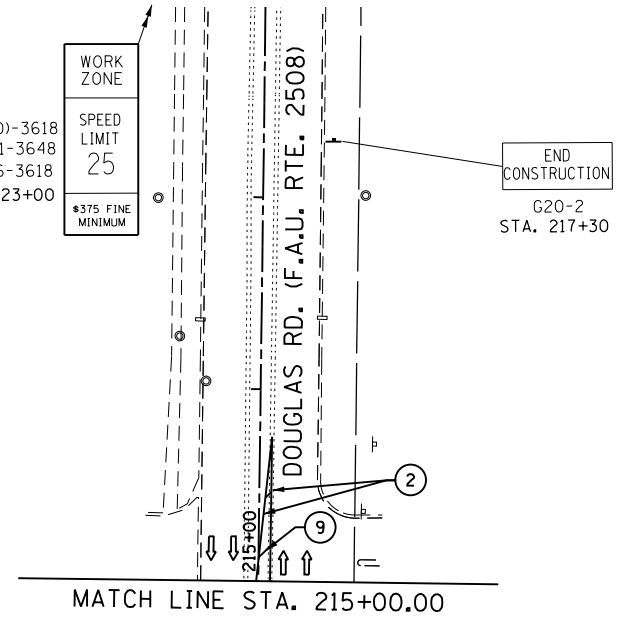
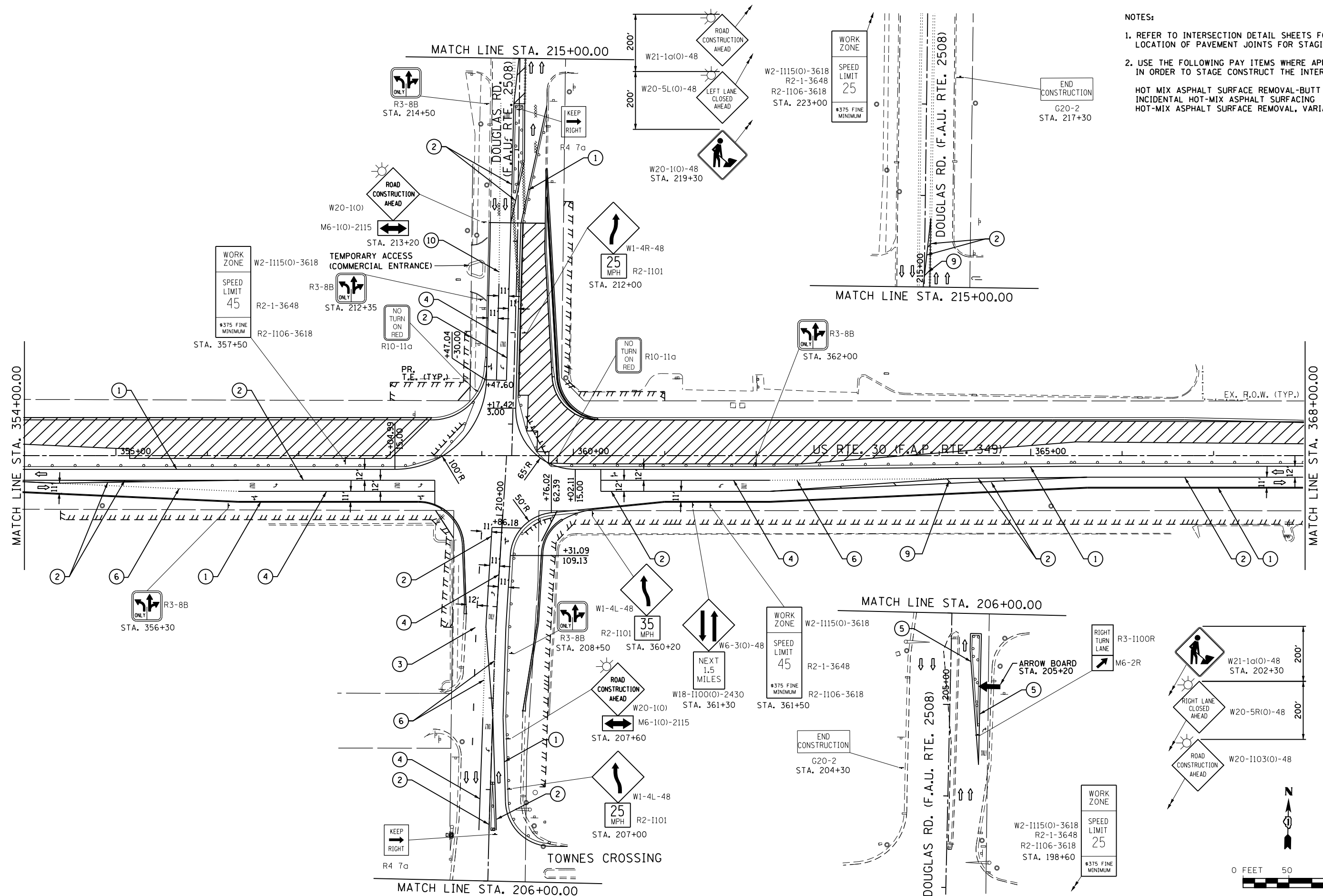


NOTES:

- REFER TO INTERSECTION DETAIL SHEETS FOR LOCATION OF PAVEMENT JOINTS FOR STAGING.
- USE THE FOLLOWING PAY ITEMS WHERE APPLICABLE IN ORDER TO STAGE CONSTRUCT THE INTERSECTION:

HOT MIX ASPHALT SURFACE REMOVAL-BUTT JOINT
 INCIDENTAL HOT-MIX ASPHALT SURFACING
 HOT-MIX ASPHALT SURFACE REMOVAL, VARIABLE DEPTH



FILE NAME = S:\JOL\6300-6399\6346\023\Micro\CAAD Sheets\0160132-sht-staging1b.dgn

STRAND
 ASSOCIATES, INC.
 ENGINEERS

1170 SOUTH HOUBOLT ROAD
 JOLIET, ILLINOIS 60431
 (815) 744-4200

USER NAME = amanda.j	DESIGNED -	REVISED -
PLOT SCALE = 100.0000' / 1"	DRAWN -	REVISED -
PLOT DATE = 8/1/2012	CHECKED -	REVISED -
	DATE -	REVISED -

**STATE OF ILLINOIS
 DEPARTMENT OF TRANSPORTATION**

**MAINTENANCE OF TRAFFIC
 STAGE 1b**

SCALE: AS SHOWN SHEET NO. OF SHEETS STA. 354+00.00 TO STA. 368+00.00

F.A.P. RTE.	SECTION	COUNTY	TOTAL SHEETS	SHEET NO.
349	11 WRS-3	KENDALL	527	107
CONTRACT NO. 60132				
FED. ROAD DIST. NO. 1 ILLINOIS FED. AID PROJECT				