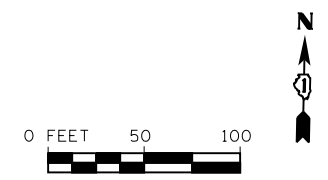
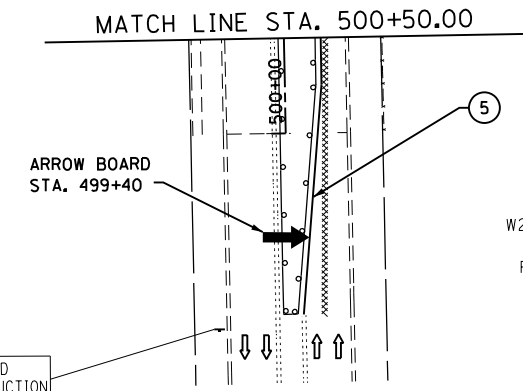
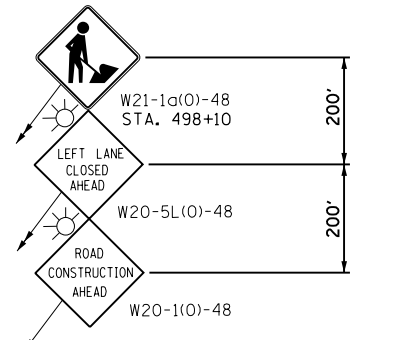
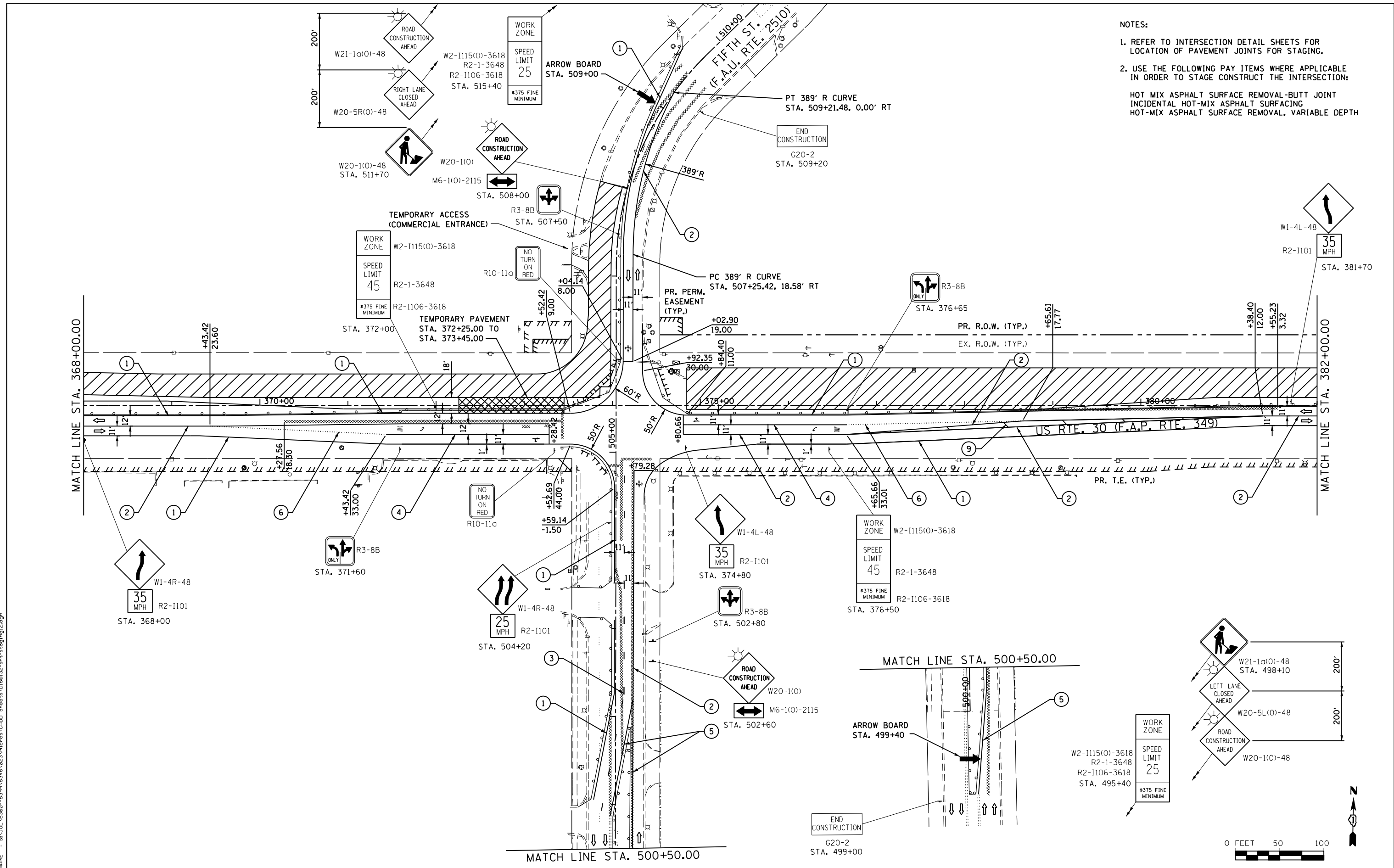


- NOTES:
- REFER TO INTERSECTION DETAIL SHEETS FOR LOCATION OF PAVEMENT JOINTS FOR STAGING.
 - USE THE FOLLOWING PAY ITEMS WHERE APPLICABLE IN ORDER TO STAGE CONSTRUCT THE INTERSECTION:
 - HOT MIX ASPHALT SURFACE REMOVAL-BUTT JOINT
 - INCIDENTAL HOT-MIX ASPHALT SURFACING
 - HOT-MIX ASPHALT SURFACE REMOVAL, VARIABLE DEPTH



FILE NAME = S:\JOL\63300-6399\6346\023\Micro\CAD\ Sheets\0160132-sht-staging2.dgn

STRAND
ENGINEERS
1170 SOUTH HOUBOLT ROAD
JOLIET, ILLINOIS 60431
(815) 744-4200

USER NAME = amanda_j	DESIGNED -	REVISED -
PLOT SCALE = 100.0000' / 1"	DRAWN -	REVISED -
PLOT DATE = 8/1/2012	CHECKED -	REVISED -
	DATE -	REVISED -

**STATE OF ILLINOIS
DEPARTMENT OF TRANSPORTATION**

MAINTENANCE OF TRAFFIC STAGE 1			
SCALE: AS SHOWN	SHEET NO.	OF SHEETS	STA. 368+00.00 TO STA. 382+00.00

F.A.P. RTE.	SECTION	COUNTY	TOTAL SHEETS	SHEET NO.
349	11 WRS-3	KENDALL	527	109
CONTRACT NO. 60132				
FED. ROAD DIST. NO. 1 ILLINOIS FED. AID PROJECT				