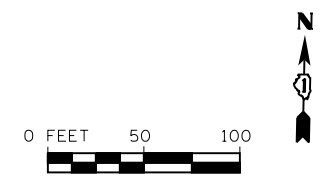
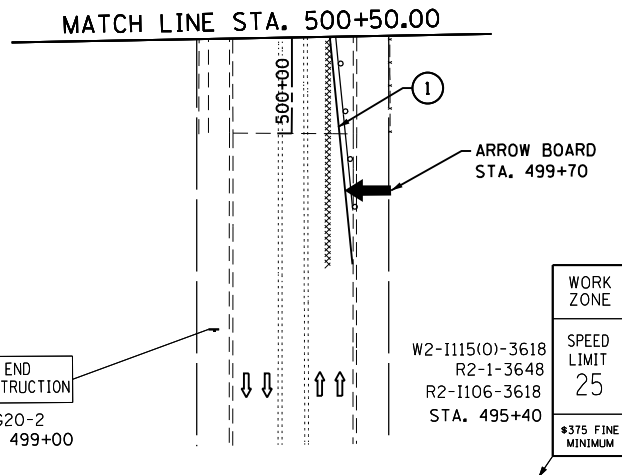
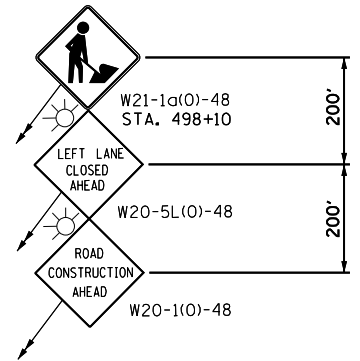
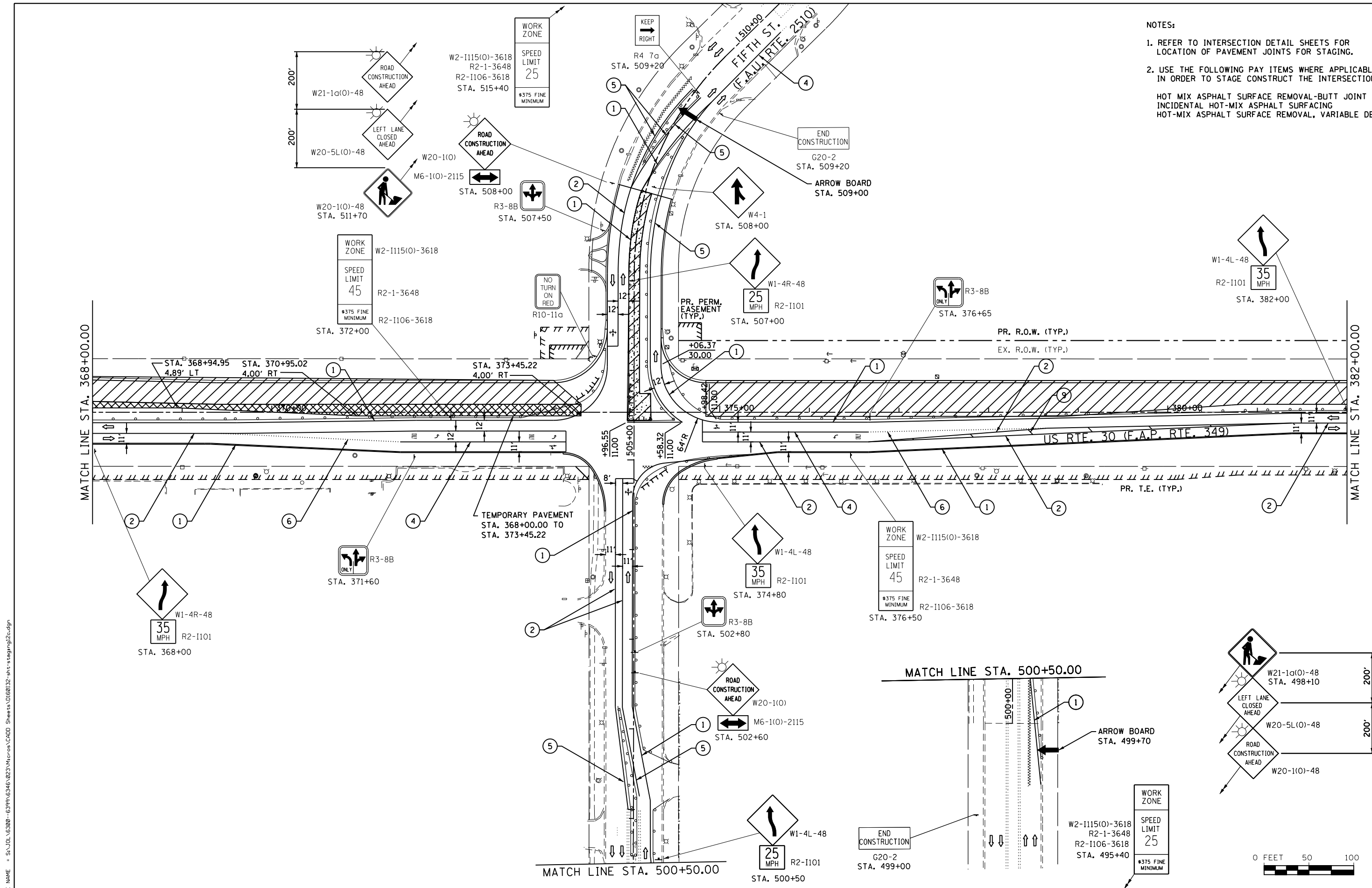


- NOTES:
- REFER TO INTERSECTION DETAIL SHEETS FOR LOCATION OF PAVEMENT JOINTS FOR STAGING.
  - USE THE FOLLOWING PAY ITEMS WHERE APPLICABLE IN ORDER TO STAGE CONSTRUCT THE INTERSECTION:
    - HOT MIX ASPHALT SURFACE REMOVAL-BUTT JOINT
    - INCIDENTAL HOT-MIX ASPHALT SURFACING
    - HOT-MIX ASPHALT SURFACE REMOVAL, VARIABLE DEPTH



FILE NAME = S:\JOL\63300-6399\6346\023\Micro\CAD\ Sheets\0160132-sh-t-staging12c.dgn

**STRAND**  
ENGINEERS  
1170 SOUTH HOUBOLT ROAD  
JOLIET, ILLINOIS 60431  
(815) 744-4200

USER NAME = amanda.j  
DESIGNED -  
DRAWN -  
PLOT SCALE = 100.0000' / 1" / 1" / 1"  
CHECKED -  
DATE -  
PLOT DATE = 8/1/2012

DESIGNED -  
DRAWN -  
CHECKED -  
DATE -  
REVISED -  
REVISED -  
REVISED -  
REVISED -

**STATE OF ILLINOIS  
DEPARTMENT OF TRANSPORTATION**

**MAINTENANCE OF TRAFFIC  
STAGE 1c**  
SCALE: AS SHOWN SHEET NO. OF SHEETS STA. 368+00.00 TO STA. 382+00.00

F.A.P. RTE.	SECTION	COUNTY	TOTAL SHEETS	SHEET NO.
349	11 WRS-3	KENDALL	527	112
CONTRACT NO. 60132				
FED. ROAD DIST. NO. 1 ILLINOIS FED. AID PROJECT				