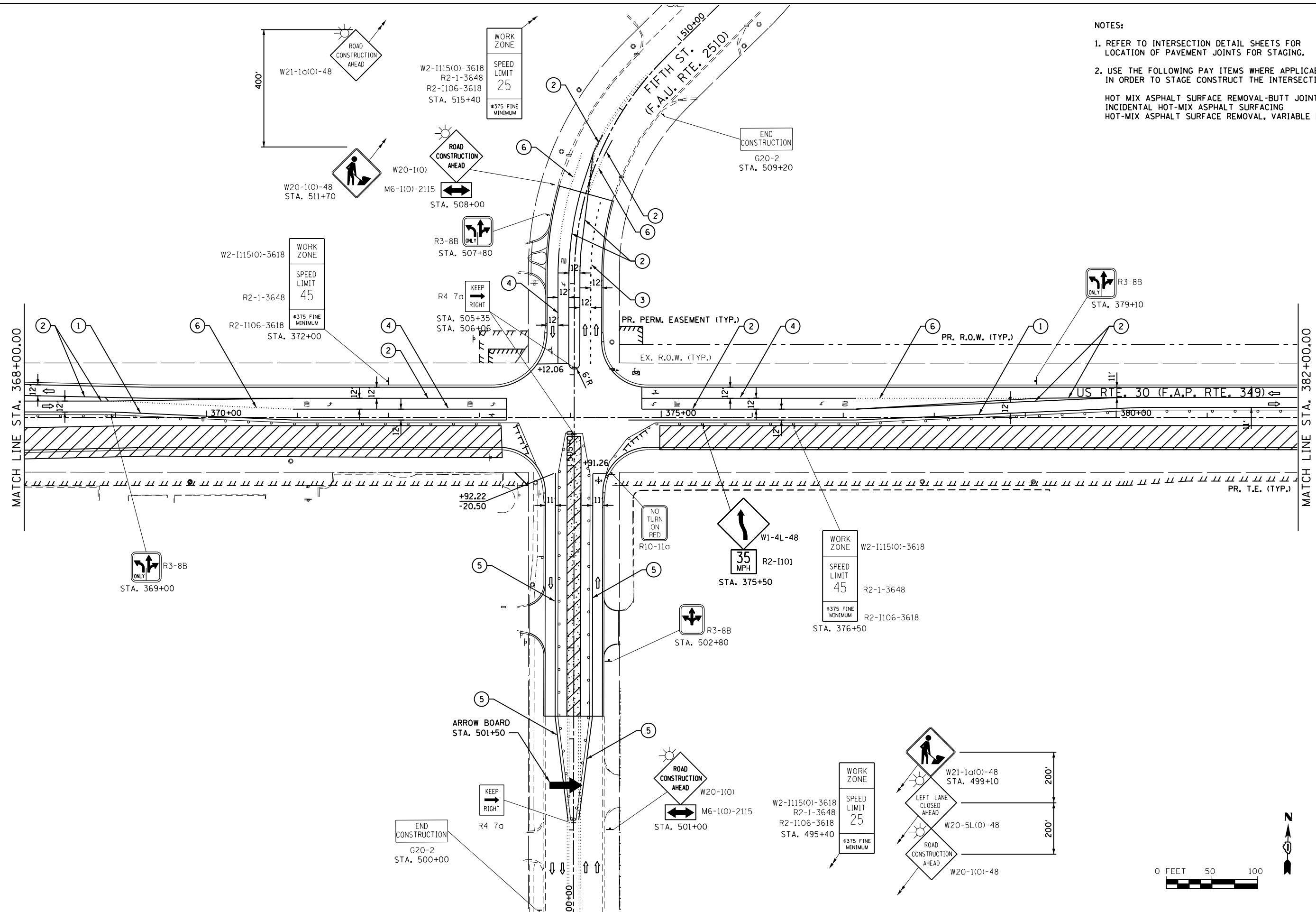
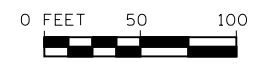


- NOTES:**
- REFER TO INTERSECTION DETAIL SHEETS FOR LOCATION OF PAVEMENT JOINTS FOR STAGING.
  - USE THE FOLLOWING PAY ITEMS WHERE APPLICABLE IN ORDER TO STAGE CONSTRUCT THE INTERSECTION:
    - HOT MIX ASPHALT SURFACE REMOVAL-BUTT JOINT
    - INCIDENTAL HOT-MIX ASPHALT SURFACING
    - HOT-MIX ASPHALT SURFACE REMOVAL, VARIABLE DEPTH



FILE NAME = S:\JOL\6300-6399\6346\023\Micro\CAD Sheets\0160132-shr-staging2b.dgn



**STRAND**  
ENGINEERS

1170 SOUTH HOUBOLT ROAD  
JOLIET, ILLINOIS 60431  
(815) 744-4200

USER NAME = amandaj  
PLOT SCALE = 100.0000' / in.  
PLOT DATE = 8/1/2012

DESIGNED -	REVISED -
DRAWN -	REVISED -
CHECKED -	REVISED -
DATE -	REVISED -

**STATE OF ILLINOIS  
DEPARTMENT OF TRANSPORTATION**

**MAINTENANCE OF TRAFFIC  
STAGE 2b**

SCALE: AS SHOWN SHEET NO. OF SHEETS STA. 368+00.00 TO STA. 382+00.00

F.A.P. RTE.	SECTION	COUNTY	TOTAL SHEETS	SHEET NO.
349	11 WRS-3	KENDALL	527	127
CONTRACT NO. 60132				
FED. ROAD DIST. NO. 1 ILLINOIS FED. AID PROJECT				