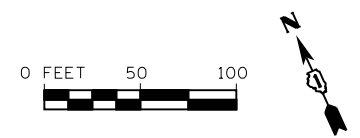
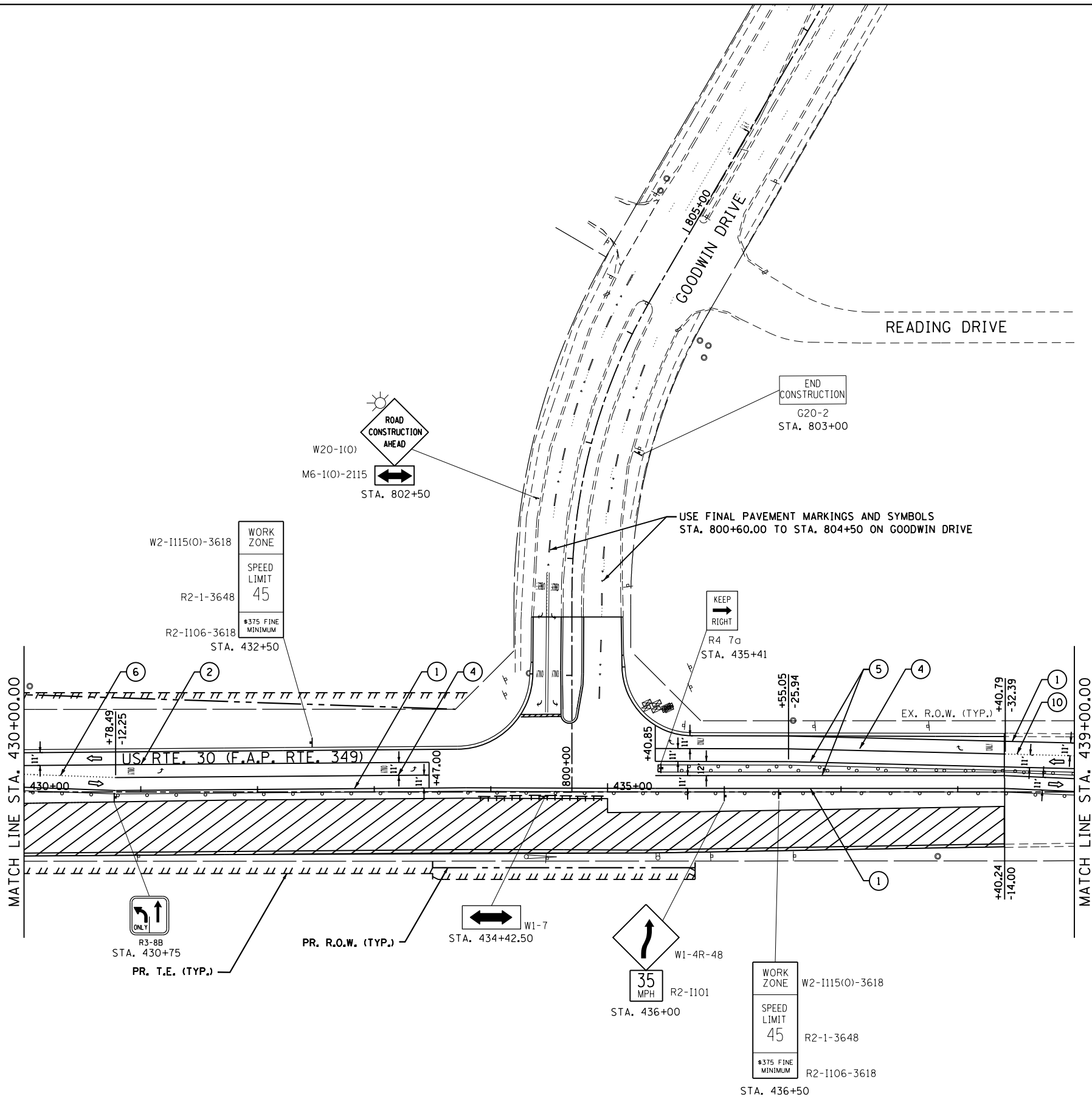


- NOTES:
- REFER TO INTERSECTION DETAIL SHEETS FOR LOCATION OF PAVEMENT JOINTS FOR STAGING.
 - USE THE FOLLOWING PAY ITEMS WHERE APPLICABLE IN ORDER TO STAGE CONSTRUCT THE INTERSECTION:
 - HOT MIX ASPHALT SURFACT REMOVAL-BUTT JOINT
 - TEMPORARY RAMP
 - INCIDENTAL HOT-MIX ASPHALT SURFACING
 - HOT-MIX ASPHALT SURFACE REMOVAL, VARIABLE DEPTH



FILE NAME = S:\JOL\63300-6399\6346\023\Micro\CAD\ Sheets\01680132-shr-staging2.dgn



USER NAME = amanda.j	DESIGNED -	REVISED -
PLOT SCALE = 100.0000' / in.	DRAWN -	REVISED -
PLOT DATE = 8/1/2012	CHECKED -	REVISED -
	DATE -	REVISED -

**STATE OF ILLINOIS
DEPARTMENT OF TRANSPORTATION**

MAINTENANCE OF TRAFFIC STAGE 2			
SCALE: AS SHOWN	SHEET NO.	OF SHEETS	STA. 430+00.00 TO STA. 439+00.00

F.A.P. RTE.	SECTION	COUNTY	TOTAL SHEETS	SHEET NO.
349	11 WRS-3	KENDALL	527	130
CONTRACT NO. 60132				
FED. ROAD DIST. NO. 1 ILLINOIS FED. AID PROJECT				