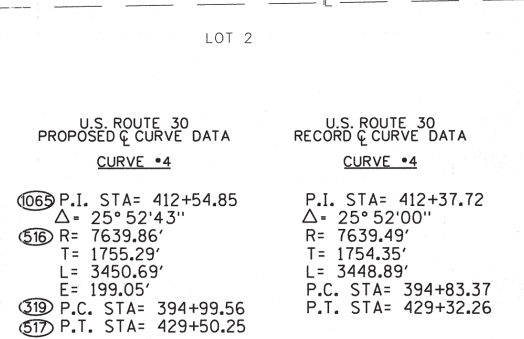
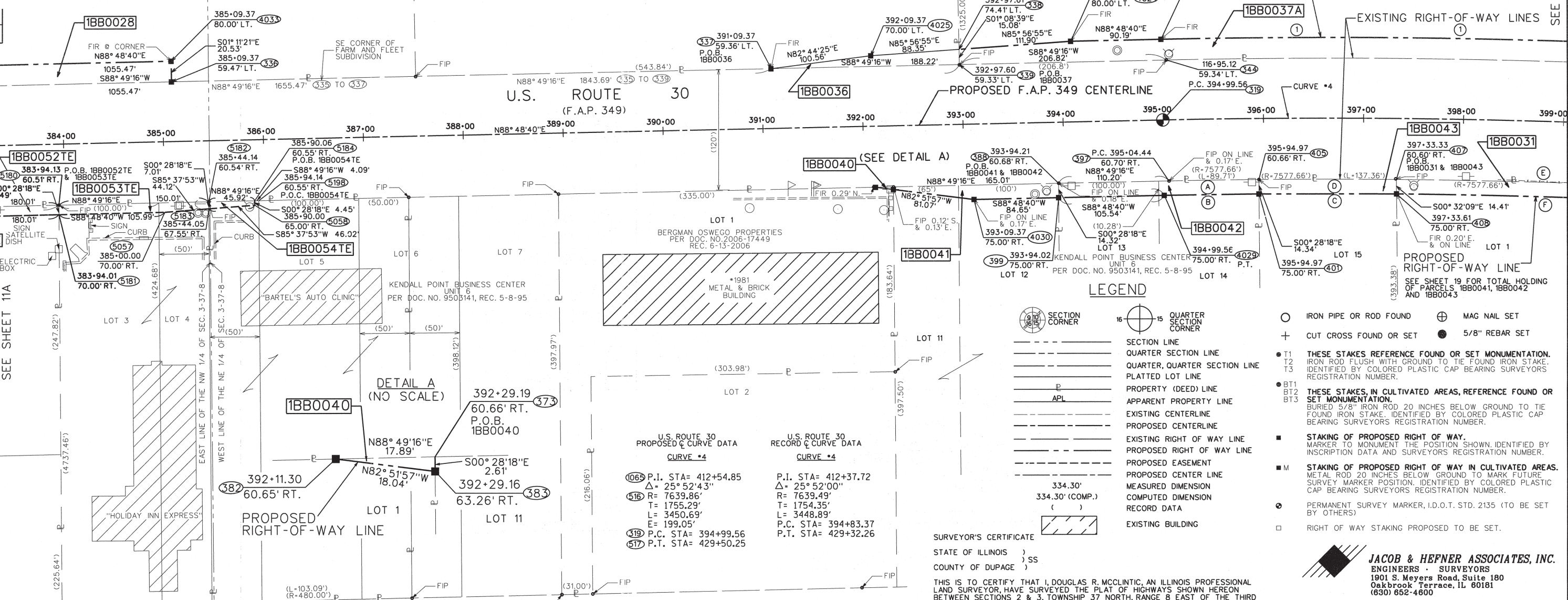
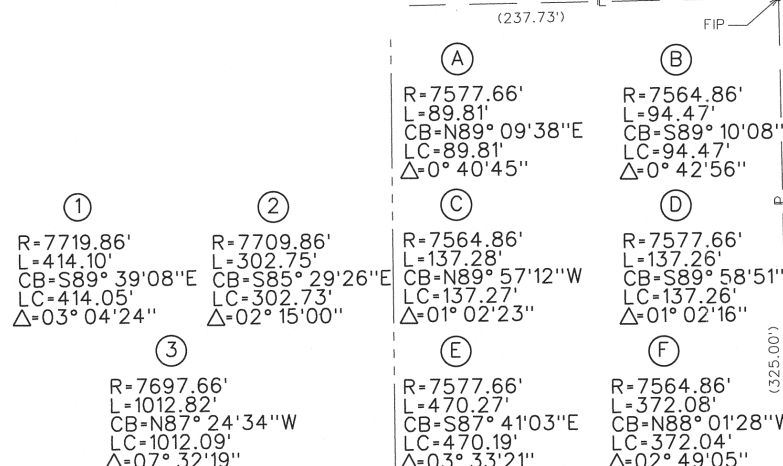


PART OF THE NW 1/4 OF SEC. 2 AND PART OF SEC. 3, T 37 N, R 8 E OF THE 3RD P.M., KENDALL COUNTY, ILLINOIS



PARCEL	OWNER	P.I.N.	TOTAL HOLDING	AREA TAKING	PREVIOUS DEDICATION	AREA REMAINING	EASEMENT AREA	EASEMENT PURP.	PROPERTY ACQUIRED BY
IBB0028	INLAND-PHILLIPS, LLC, AN ILLINOIS LIMITED LIABILITY COMPANY	03-03-100-022	18.412 ACS.	0.495 ACS.	N.A.	17.917 ACS.	N.A.	N.A.	
IBB0031	KENDALL BRIDGE, LLC, AN ILLINOIS LIMITED LIABILITY COMPANY	03-03-253-005 03-03-253-002	5.454 ACS.	0.140 ACS.	N.A.	5.314 ACS.	N.A.	N.A.	
IBB0036	INLAND-KENDALL, LLC, AN ILLINOIS LIMITED LIABILITY COMPANY	03-03-200-007 03-03-100-023	31.823 ACS.	0.038 ACS.	N.A.	31.785 ACS.	N.A.	N.A.	
IBB0037	INLAND-PHILLIPS, LLC, AN ILLINOIS LIMITED LIABILITY COMPANY	03-03-200-006 03-02-100-005 03-02-100-009	111.046 ACS.	A=0.438 ACS. B=0.386 ACS.	N.A.	110.222 ACS.	N.A.	N.A.	
IBB0040	DAVID R. BERGMAN DECLARATION OF TRUST DATED NOVEMBER 5, 1996	03-03-251-027	1.560 ACS.	0.001 ACS. 23 SQ. FT.	N.A.	1.559 ACS.	N.A.	N.A.	
IBB0041	NAVNEET CHAWLA	03-03-251-020 03-03-251-010	1.505 ACS.	0.043 ACS.	N.A.	1.462 ACS.	N.A.	N.A.	
IBB0042	KENDALL POINT, LLC, AN ILLINOIS LIMITED LIABILITY COMPANY	03-03-251-011 03-03-251-012	1.823 ACS.	0.066 ACS.	N.A.	1.757 ACS.	N.A.	N.A.	
IBB0043	MICHAEL E. SHIPMAN AND MARISA SHIPMAN, HIS WIFE, IN JT. TENANCY	03-03-251-013	1.247 ACS.	0.045 ACS.	N.A.	1.202 ACS.	N.A.	N.A.	
IBB0052TE	KOMBUS LLC	03-03-176-011 03-03-176-012	2.276 ACS.	N.A.	N.A.	2.276 ACS.	0.039 AC.	CONST.	
IBB0053TE	KISHOR PATEL	03-03-176-008 03-03-251-022	1.504 ACS.	N.A.	N.A.	1.504 ACS.	0.031 AC.	CONST.	
IBB0054TE	PATRICK BARTEL ENTERPRISES, INC AN ILLINOIS CORPORATION	03-03-251-023 03-03-251-025	1.838 ACS.	N.A.	N.A.	1.838 ACS.	0.006 AC. (263 S.F.)	CONST.	



SURVEYOR'S CERTIFICATE

STATE OF ILLINOIS)
 COUNTY OF DUPAGE)

THIS IS TO CERTIFY THAT I, DOUGLAS R. MCCLINTIC, AN ILLINOIS PROFESSIONAL LAND SURVEYOR, HAVE SURVEYED THE PLAT OF HIGHWAYS SHOWN HEREON BETWEEN SECTIONS 2 & 3, TOWNSHIP 37 NORTH, RANGE 8 EAST OF THE THIRD PRINCIPAL MERIDIAN IN KENDALL COUNTY; THAT THE SURVEY IS TRUE AND COMPLETE AS SHOWN TO THE BEST OF MY KNOWLEDGE AND BELIEF; THAT THE PLAT CORRECTLY REPRESENTS SAID SURVEY, THAT ALL MONUMENTS FOUND AND ESTABLISHED ARE OF PERMANENT QUALITY AND OCCUPY THE POSITIONS SHOWN THEREON AND THAT THE MONUMENTS ARE SUFFICIENT TO ENABLE THE SURVEY TO BE RETRACED.

MADE FOR THE DEPARTMENT OF TRANSPORTATION, STATE OF ILLINOIS.

DATED AT OAKBROOK TERRACE, ILLINOIS THIS 30TH DAY OF MAY, 2010.



RECEIVED
 MAY 05 2011
 PLATS & LEGALS

ILLINOIS PROFESSIONAL LAND SURVEYOR NO. 35-2992
 LICENSE EXPIRATION DATE: NOVEMBER 30, 2010

THIS PROFESSIONAL SERVICE CONFORMS TO THE CURRENT MINIMUM STANDARDS FOR A BOUNDARY SURVEY.

JACOB & HEFNER ASSOCIATES, INC.
 ENGINEERS - SURVEYORS
 1901 S. Meyers Road, Suite 180
 Oakbrook Terrace, IL 60181
 (630) 652-4800

PLAT OF HIGHWAYS
 STATE OF ILLINOIS
 DEPARTMENT OF TRANSPORTATION
 U.S. ROUTE 30

SECTION: IL 31 TO U.S. 34 COUNTY: KENDALL
 PROJECT: JOB NO.: R-91-014-95
 STATION: 384+00 TO STATION: 399+00
 SCALE: 1"=50' SHEET 12 OF 20

BUREAU OF LAND ACQUISITION
 201 WEST CENTER COURT
 SCHAUMBURG, ILLINOIS 60196