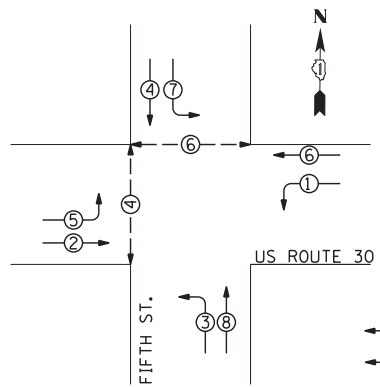




THE END OF THE TRACER CABLE SHALL BE CONTINUOUS AND EXTEND INTO THE CONTROLLER CABINET

CONTROLLER SEQUENCE



PHASE DESIGNATION DIAGRAM

LEGEND
 ● ○ DUAL ENTRY PHASE
 ● ○ PEDESTRIAN PHASE
 ● NUMBER REFERS TO ASSOCIATED PHASE

PROPOSED INTERCONNECT AND SAMPLING (SYSTEM) DETECTORS

US ROUTE 30

FIFTH ST.

PROPOSED INTERCONNECT TO DOUGLAS RD.

NO. 14 TRACER CABLE

4-1/2" NO. 6 GROUND CABLES

PROPOSED INTERCONNECT AND SAMPLING (SYSTEM) DETECTORS

CABLE PLAN

THE TRAFFIC SIGNAL CONTROL EQUIPMENT FOR THIS PROJECT SHALL BE "EAGLE" TO MATCH THE EXISTING ADJACENT SYSTEM.

SCHEDULE OF QUANTITIES

ITEM	UNIT	QUANTITY
SIGN PANEL - TYPE 1	SO FT	27
SERVICE INSTALLATION - POLE MOUNTED	EACH	1
UNDERGROUND CONDUIT, GALVANIZED STEEL, 2" DIA.	FOOT	766
UNDERGROUND CONDUIT, GALVANIZED STEEL, 2 1/2" DIA.	FOOT	60
UNDERGROUND CONDUIT, GALVANIZED STEEL, 3" DIA.	FOOT	92
UNDERGROUND CONDUIT, GALVANIZED STEEL, 4" DIA.	FOOT	505
HANDHOLE	EACH	4
HEAVY-DUTY HANDHOLE	EACH	4
DOUBLE HANDHOLE	EACH	2
FULL-ACTUATED CONTROLLER AND TYPE IV CABINET, SPECIAL	EACH	1
UNINTERRUPTABLE POWER SUPPLY, SPECIAL	EACH	1
TRANSCEIVER-FIBER OPTIC	EACH	1
ELECTRIC CABLE IN CONDUIT, SIGNAL NO. 14 2C	FOOT	770
ELECTRIC CABLE IN CONDUIT, SIGNAL NO. 14 3C	FOOT	790
ELECTRIC CABLE IN CONDUIT, SIGNAL NO. 14 5C	FOOT	1830
ELECTRIC CABLE IN CONDUIT, SIGNAL NO. 14 7C	FOOT	1740
ELECTRIC CABLE IN CONDUIT, LEAD-IN, NO. 14 1 PAIR	FOOT	2900
ELECTRIC CABLE IN CONDUIT, SERVICE, NO. 6 2C	FOOT	58
ELECTRIC CABLE IN CONDUIT, GROUNDING, NO. 6 1C	FOOT	900
TRAFFIC SIGNAL POST, GALVANIZED STEEL 16 FT.	EACH	4
STEEL MAST ARM ASSEMBLY AND POLE, 40 FT.	EACH	1
STEEL MAST ARM ASSEMBLY AND POLE, 42 FT.	EACH	1
STEEL MAST ARM ASSEMBLY AND POLE, 46 FT.	EACH	1
STEEL MAST ARM ASSEMBLY AND POLE, 50 FT.	EACH	1
CONCRETE FOUNDATION, TYPE A	FOOT	16
CONCRETE FOUNDATION, TYPE C	FOOT	4
CONCRETE FOUNDATION, TYPE E 36-INCH DIAMETER	FOOT	54
SIGNAL HEAD, L.E.D., 1-FACE, 3-SECTION, MAST ARM MOUNTED	EACH	8
SIGNAL HEAD, L.E.D., 1-FACE, 5-SECTION, BRACKET MOUNTED	EACH	4
SIGNAL HEAD, L.E.D., 1-FACE, 5-SECTION, MAST ARM MOUNTED	EACH	4
PEDESTRIAN SIGNAL HEAD, L.E.D., 1-FACE, BRACKET MOUNTED	EACH	4
WITH COUNTDOWN TIMER		
TRAFFIC SIGNAL BACKPLATE, LOUVERED, ALUMINUM	EACH	12
INDUCTIVE LOOP DETECTOR	EACH	12
PREFORMED DETECTOR LOOP	FOOT	1020
PREDESTRIAN PUSH-BUTTON	EACH	4
TEMPORARY TRAFFIC SIGNAL INSTALLATION	EACH	1
REMOVE EXISTING TRAFFIC SIGNAL EQUIPMENT	EACH	1
REMOVE EXISTING HANDHOLE	EACH	12
REMOVE EXISTING CONCRETE FOUNDATION	EACH	9
TEMPORARY TRAFFIC SIGNAL TIMING	EACH	1

I.D.O.T. TRAFFIC SIGNAL INSTALLATION ELECTRICAL SERVICE REQUIREMENTS				TOTAL WATTAGE
TYPE	NO LAMPS	WATTAGE		% OPERATION
		INCAND.	LED	
SIGNAL (RED)	16	17	0.50	136.0
(YELLOW)	16	25	0.25	100.0
(GREEN)	16	15	0.25	60.0
ARROW	16	12	0.10	19.2
PED. SIGNAL	4	25	1.00	100
ILLUM. SIGN	-	25	0.10	-
CONTROLLER	1	100	1.00	100
TOTAL =				515.2

ENERGY COST TO:

VILLAGE OF MONTGOMERY
 1300 S. BROADWAY
 MONTGOMERY, ILLINOIS 60538

ENERGY SUPPLY CONTACT: MARK SHERIBEL
 PHONE: 630-723-2128
 COMPANY: COMMONWEALTH EDISON

SINGH
 CONSULTING ENGINEERS
 www.singhinc.com

USER NAME = vpelegrinos	DESIGNED - VO	REVISED -
PLOT SCALE = 20,000' / in.	DRAWN - YJ	REVISED -
PLOT DATE = 4/25/2012	CHECKED - KGP	REVISED -
	DATE -	REVISED -

**STATE OF ILLINOIS
 DEPARTMENT OF TRANSPORTATION**

**SCHEDULE OF QUANTITIES, CABLE PLAN AND PHASE DESIGNATION DIAGRAM
 US ROUTE 30 AT FIFTH ST.**

SCALE: N.T.S. SHEET NO. OF SHEETS STA. TO STA.

F.A.P. RTE.	SECTION	COUNTY	TOTAL SHEETS	SHEET NO.
349	11 WRS-3	KENDALL	527	269
CONTRACT NO. 60132				
FED. ROAD DIST. NO. 1 ILLINOIS FED. AID PROJECT				

\\d010\Projects\264\Dgn\CADD_Sheets\160132-SHT-TS-25.dgn