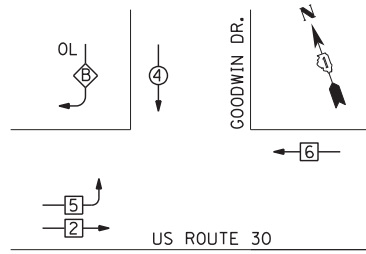




CONTROLLER SEQUENCE



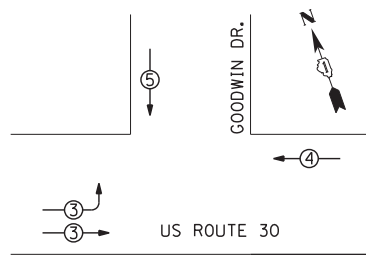
LEGEND

- ◀ ⊙ ▶ DUAL ENTRY PHASE
- ◀ □ ▶ SINGLE ENTRY PHASE
- ◀ OL ▶ OVERLAP
- NUMBER REFERS TO ASSOCIATED PHASE

PHASE DESIGNATION DIAGRAM

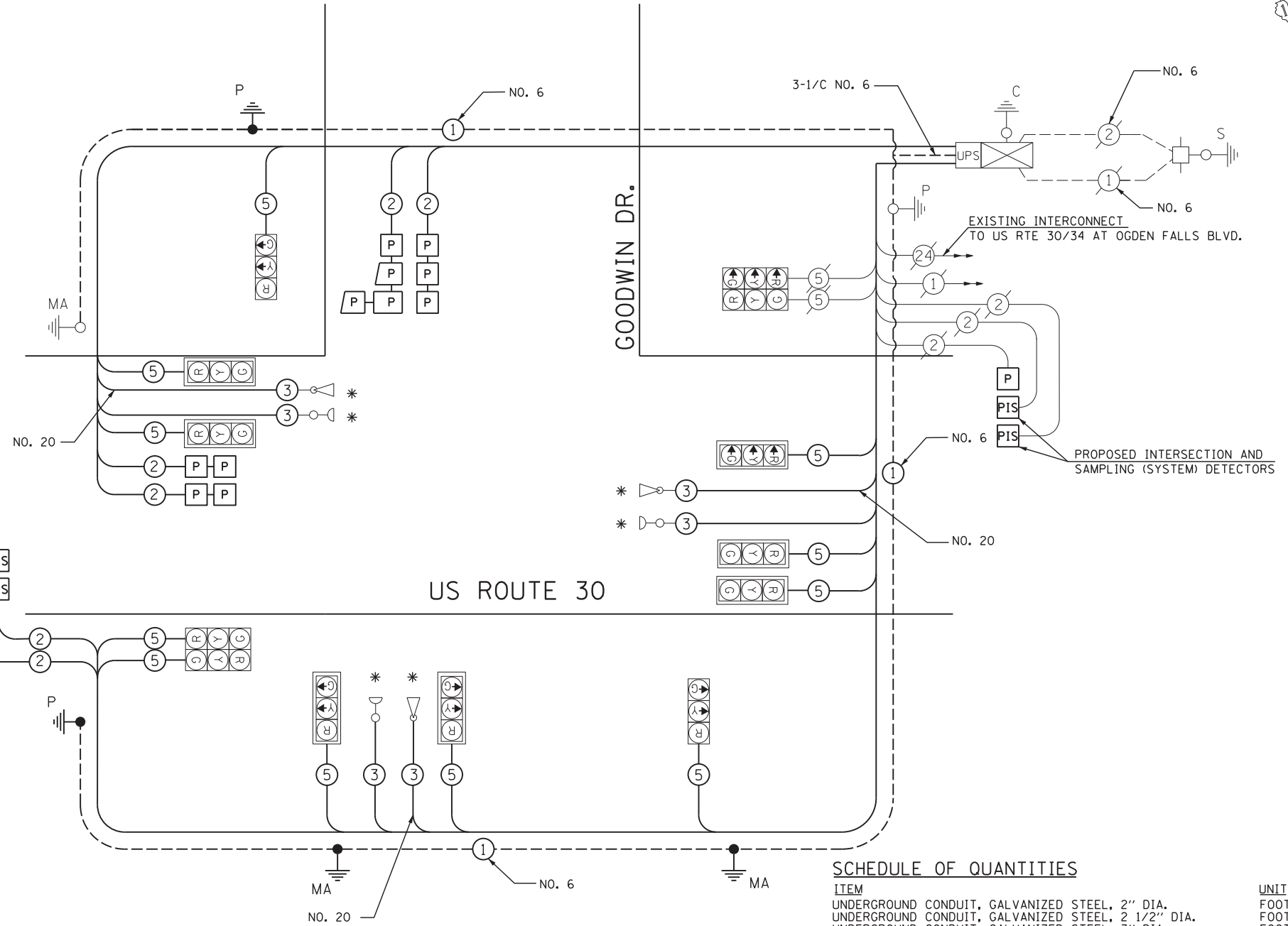
OVERLAP LETTER	PERMISSIVE PHASE	PROTECTED PHASE
B	= 4	+ 5

EMERGENCY VEHICLE PREEMPTION SEQUENCE



PROPOSED INTERSECTION AND SAMPLING (SYSTEM) DETECTORS

EMERGENCY VEHICLE PREEMPTORS			
EMERGENCY VEHICLE PREEMPTOR	3	4	5
MOVEMENT	↗	←	↓



CABLE PLAN

SCHEDULE OF QUANTITIES

ITEM	UNIT	QUANTITY
UNDERGROUND CONDUIT, GALVANIZED STEEL, 2" DIA.	FOOT	476
UNDERGROUND CONDUIT, GALVANIZED STEEL, 2 1/2" DIA.	FOOT	50
UNDERGROUND CONDUIT, GALVANIZED STEEL, 3" DIA.	FOOT	90
UNDERGROUND CONDUIT, GALVANIZED STEEL, 4" DIA.	FOOT	353
HANDHOLE	EACH	4
HEAVY-DUTY HANDHOLE	EACH	2
* ELECTRIC CABLE IN CONDUIT, SIGNAL NO. 14 3C	FOOT	824
ELECTRIC CABLE IN CONDUIT, SIGNAL NO. 14 5C	FOOT	2885
ELECTRIC CABLE IN CONDUIT, LEAD-IN, NO. 14 1 PAIR	FOOT	1915
ELECTRIC CABLE IN CONDUIT, GROUNDING, NO. 6 1C	FOOT	665
CONCRETE FOUNDATION, TYPE A	FOOT	8
CONCRETE FOUNDATION, TYPE E 30-INCH DIAMETER	FOOT	10
CONCRETE FOUNDATION, TYPE E 36-INCH DIAMETER	EACH	13
DRILL EXISTING HANDHOLE	EACH	3
PREFORMED DETECTOR LOOP	FOOT	560
TEMPORARY TRAFFIC SIGNAL INSTALLATION	EACH	1
RELOCATE EXISTING SIGNAL HEAD	EACH	9
RELOCATE EXISTING TRAFFIC SIGNAL POST	EACH	2
RELOCATE EXISTING MAST ARM ASSEMBLY AND POLE	EACH	2
* RELOCATE EXISTING EMERGENCY VEHICLE PRIORITY SYSTEM, DETECTOR UNIT	EACH	2
REMOVE EXISTING TRAFFIC SIGNAL EQUIPMENT	EACH	1
REMOVE EXISTING HANDHOLE	EACH	6
REMOVE EXISTING CONCRETE FOUNDATION	EACH	5
TEMPORARY TRAFFIC SIGNAL TIMING	EACH	1
* ELECTRIC CABLE IN CONDUIT NO. 20 3/C, TWISTED, SHIELDED	FOOT	824

THE TRAFFIC SIGNAL CONTROL EQUIPMENT FOR THIS PROJECT SHALL BE "ECONOLITE" TO MATCH THE EXISTING ADJACENT SYSTEM.

* 100% OF THE COST TO THE VILLAGE OF MONTGOMERY

I.D.O.T. TRAFFIC SIGNAL INSTALLATION ELECTRICAL SERVICE REQUIREMENTS					
TYPE	NO LAMPS	WATTAGE		% OPERATION	TOTAL WATTAGE
		INCAND.	LED		
SIGNAL (RED)	13	17	0.50	110.5	
(YELLOW)	13	25	0.25	81.3	
(GREEN)	13	15	0.25	48.8	
ARROW	-	12	0.10	-	
PED. SIGNAL	-	25	1.00	-	
ILLUM. SIGN	-	25	0.10	-	
CONTROLLER	1	100	1.00	100.0	
TOTAL =					340.6

ENERGY COST TO:
 VILLAGE OF MONTGOMERY
 1300 S. BROADWAY
 MONTGOMERY, ILLINOIS 60538
 ENERGY SUPPLY CONTACT: MARK SHERIBEL
 PHONE: 630-723-2128
 COMPANY: COMMONWEALTH EDISON



USER NAME = vpelegrinos	DESIGNED - VO	REVISED -
PLOT SCALE = 20,000' / in.	DRAWN - YJ	REVISED -
PLOT DATE = 4/25/2012	CHECKED - KGP	REVISED -
	DATE -	REVISED -

**STATE OF ILLINOIS
 DEPARTMENT OF TRANSPORTATION**

**SCHEDULE OF QUANTITIES, CABLE PLAN, PHASE DESIGNATION DIAGRAM
 AND EMERGENCY VEHICLE PREEMPTION SEQUENCE
 US ROUTE 30 AT GOODWIN DR.**

F.A.P. RTE.	SECTION	COUNTY	TOTAL SHEETS	SHEET NO.
349	11 WRS-3	KENDALL	527	275
CONTRACT NO. 60132				
FED. ROAD DIST. NO. 1 ILLINOIS FED. AID PROJECT				

\\Dc010\Projects\264\Dgn\CADD_Sheets\160132-SHT-TS-31.dgn