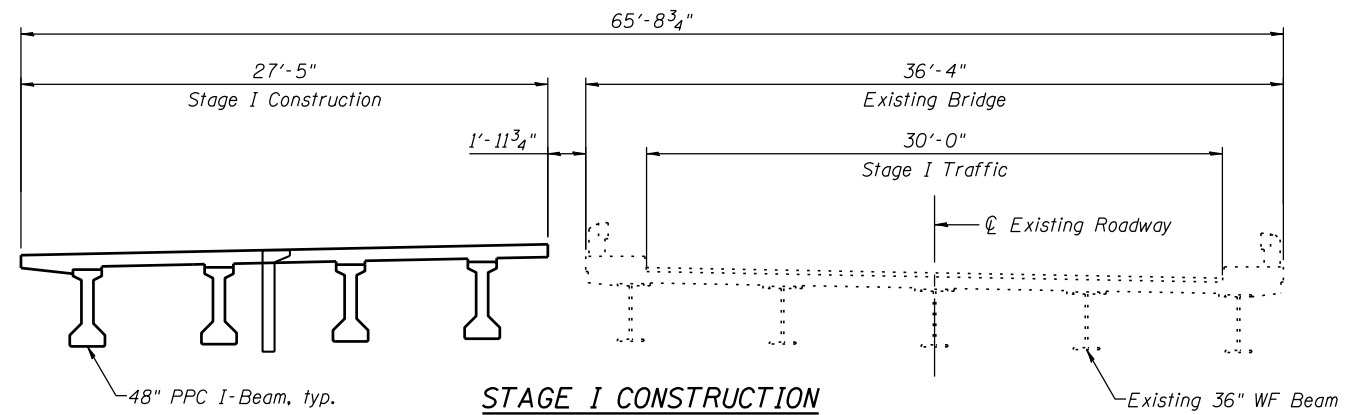


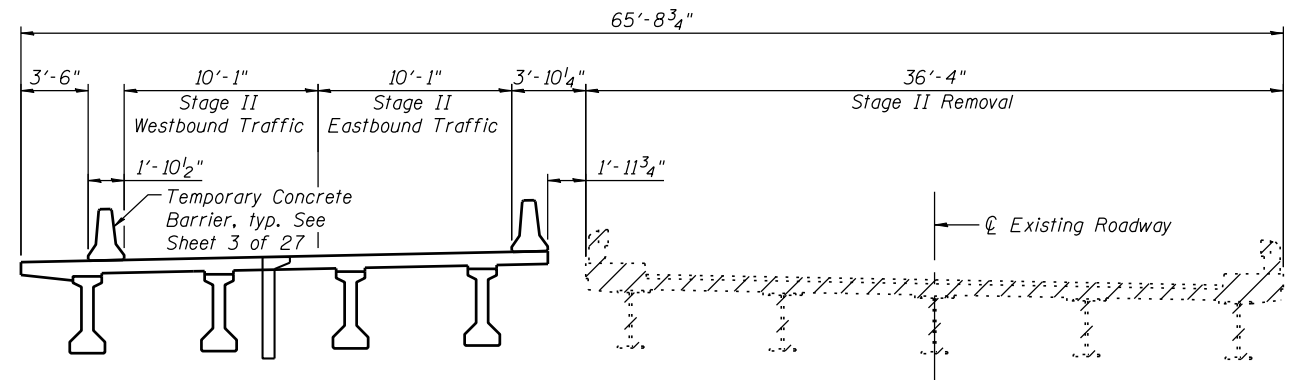
TOTAL BILL OF MATERIAL

| ITEM | Unit | SUPER | SUB | TOTAL |
|--|-------|---------|--------|---------|
| Stone Riprap, Class A5 | Sq Yd | - | 1,630 | 1,630 |
| Filter Fabric | Sq Yd | - | 1,630 | 1,630 |
| Removal Of Existing Structures, No. 1 | Each | 1 | - | 1 |
| Structure Excavation | Cu Yd | - | 432 | 432 |
| Concrete Structures | Cu Yd | 0 | 163 | 163 |
| Concrete Superstructure | Cu Yd | 642 | - | 642 |
| Bridge Deck Grooving | Sq Yd | 848 | 0 | 848 |
| Concrete Encasement | Cu Yd | 0 | 16 | 16 |
| Protective Coat | Sq Yd | 1,528 | 22 | 1,550 |
| Furnishing And Erecting Precast Prestressed Concrete I-Beams, 48 In. | Foot | 1,081 | - | 1,081 |
| Reinforcement Bars, Epoxy Coated | Pound | 122,870 | 28,510 | 151,380 |
| Bar Splicers | Each | 674 | 28 | 702 |
| Aluminum Railing, Type L | Foot | 137 | - | 137 |
| Bicycle Railing | Foot | 145 | - | 145 |
| Parapet Railing | Foot | 140 | - | 140 |
| Furnishing Steel Piles HPI4X73 | Foot | - | 754 | 754 |
| Driving Piles | Foot | - | 754 | 754 |
| Test Pile Steel HPI4X73 | Each | - | 2 | 2 |
| Pile Shoes | Each | - | 28 | 28 |
| Name Plates | Each | 1 | - | 1 |
| Geocomposite Wall Drain | Sq Yd | - | 210 | 210 |
| Porous Granular Embankment, Special | Cu Yd | - | 432 | 432 |
| Drainage Scupper, DS-12 | Each | 4 | - | 4 |
| Temporary Sheet Piling | Sq Ft | - | 1,034 | 1,034 |
| Pipe Underdrains For Structures 4" | Foot | - | 355 | 355 |
| Settlement Platforms | Each | - | 5 | 5 |

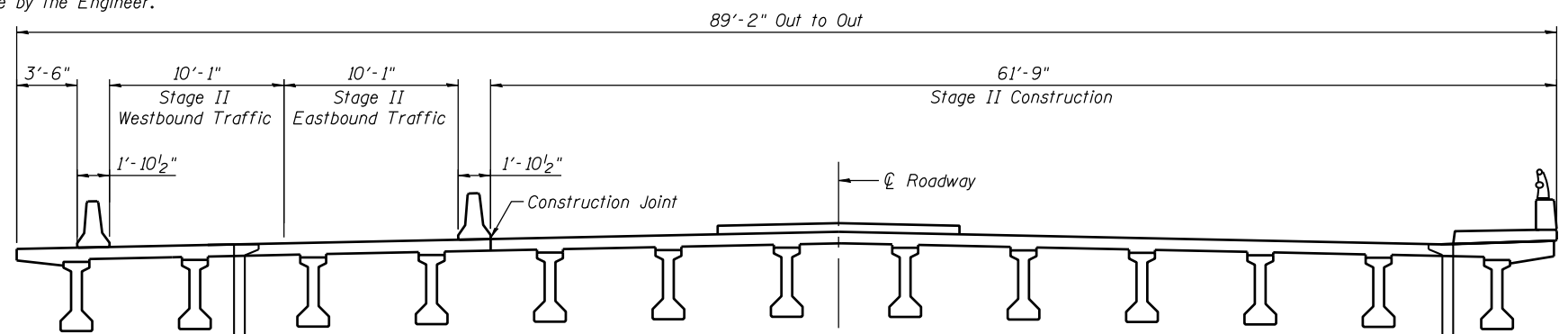
Note:
The Contractor shall connect the first sheet to the existing abutment wall to ensure stability of sheets driven to the top of the existing footing. This connection shall be reviewed and accepted by the Engineer and included in the cost for Temporary Sheet Piling.
If the Contractor chooses to alter the temporary cantilevered sheet piling design requirements shown on the plans, a design submittal including plan details and calculations will be required for review and acceptance by the Engineer.



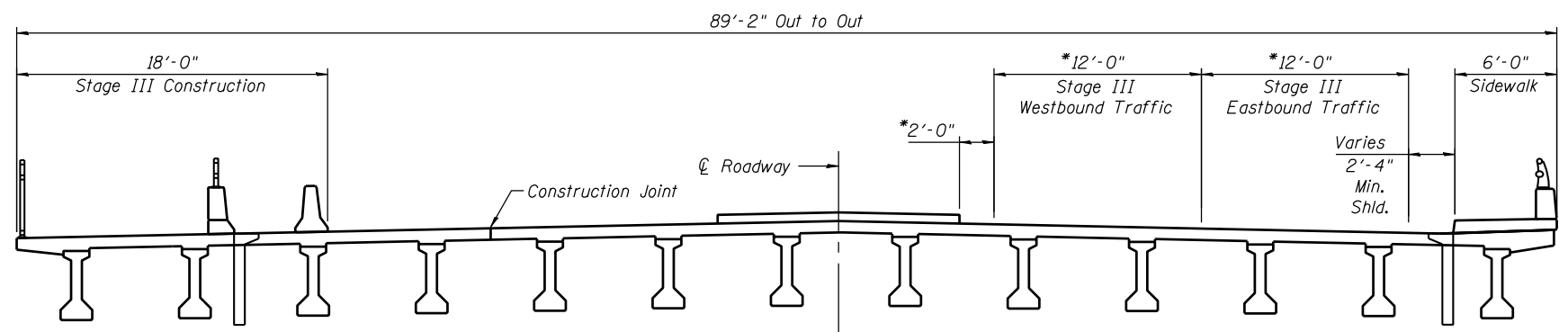
STAGE I CONSTRUCTION



STAGE II REMOVAL



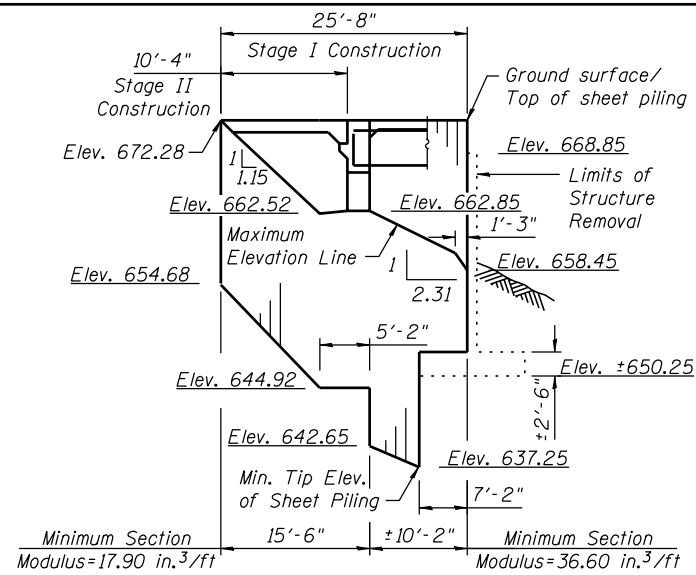
STAGE II CONSTRUCTION



STAGE III CONSTRUCTION

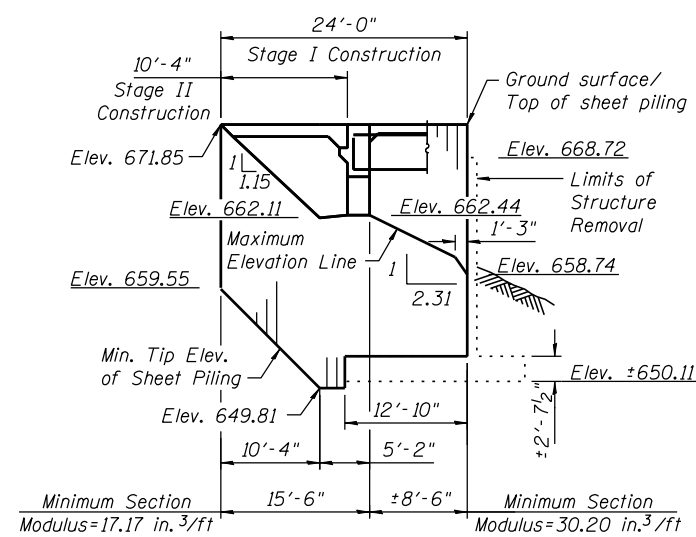
* Radial Dimension

Notes:
All staging cross sections are looking east.
For quantity of Temporary Concrete Barrier see Roadway Plans.
Hatched area indicates Removal of Existing Structures, No. 1.
Removal of existing wearing surface and existing expansive materials are included in Removal of Existing Structures, No. 1.



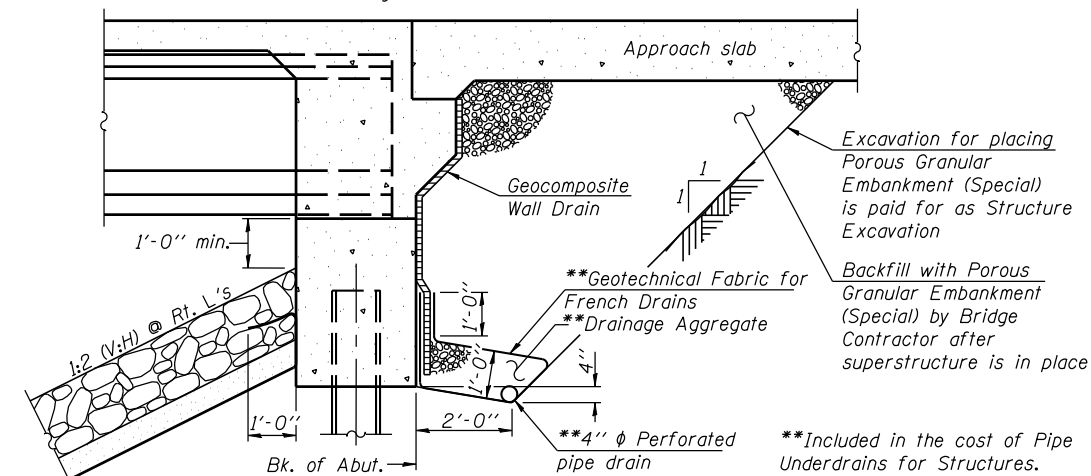
WEST ABUTMENT TEMPORARY SHEET PILING

(Looking North)



EAST ABUTMENT TEMPORARY SHEET PILING

(Looking South)

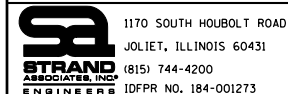


SECTION THRU INTEGRAL ABUTMENT

(Horiz. dim. @ Rt. L's)

Note:
All drainage system components shall extend to 2'-0" from the end of each wingwall except an outlet pipe shall extend until intersecting with the side slopes. The pipes shall drain into concrete headwalls. (See Article 601.05 of the Standard Specifications and Highway Standard 601101).

FILE NAME = s:\p1\6380--6399\6346\023\micro\sh\str_plans\0470301-60132-002-00.dgn



| | | |
|----------------------|--------------|-----------|
| USER NAME = brianf | DESIGNED KDH | REVISED - |
| PLOT SCALE = | CHECKED AJS | REVISED - |
| PLOT DATE = 5/1/2012 | DRAWN BJF | REVISED - |
| | CHECKED KDH | REVISED - |

**STATE OF ILLINOIS
DEPARTMENT OF TRANSPORTATION**

**TOTAL BILL OF MATERIALS AND GENERAL DETAILS
STRUCTURE NO. 047-0301**

SHEET NO. 2 OF 27 SHEETS

| | | | | |
|--------------------|------------------|----------------|------------------|---------------|
| F.A.P. RTE. 349 | SECTION 11 WRS-3 | COUNTY KENDALL | TOTAL SHEETS 527 | SHEET NO. 290 |
| CONTRACT NO. 60132 | | | | |

ILLINOIS FED. AID PROJECT