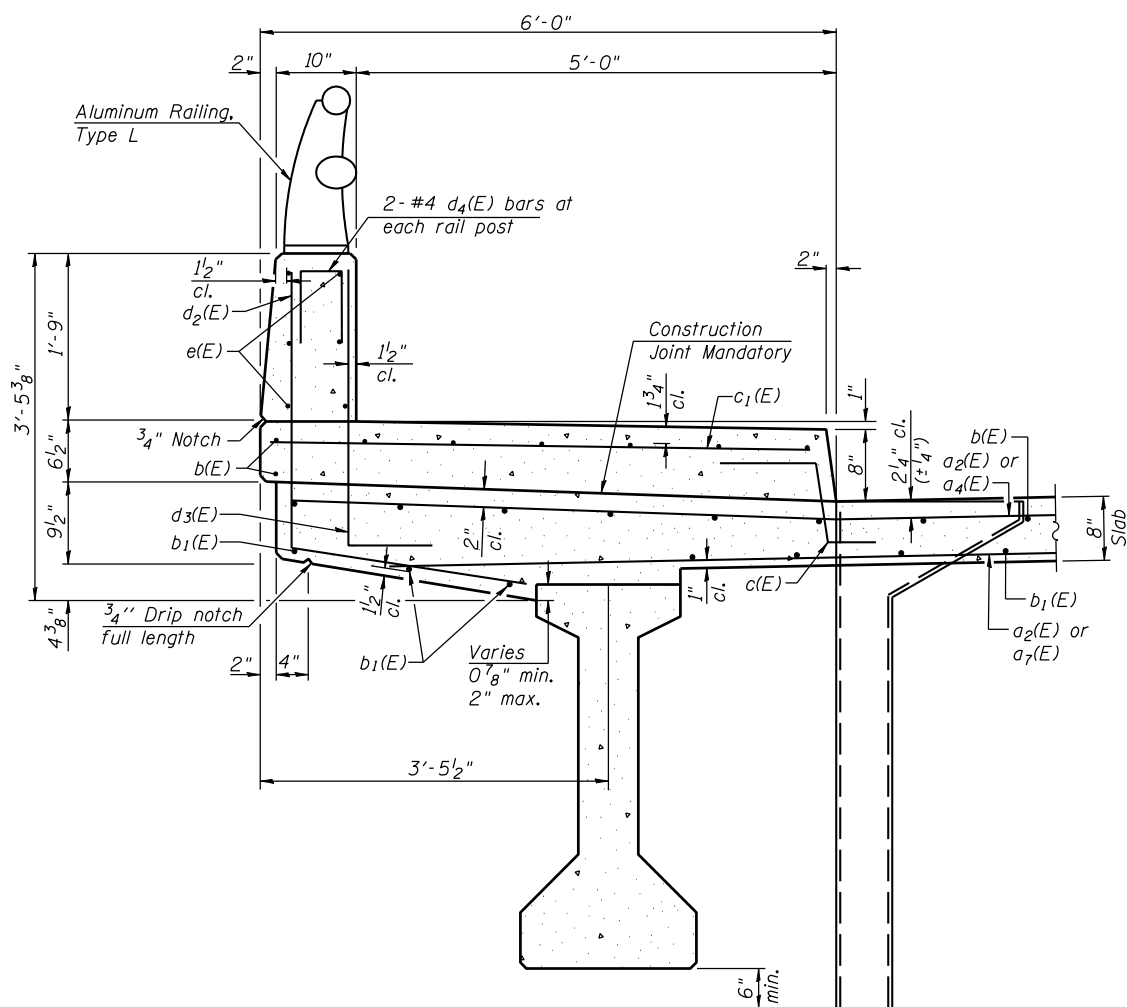


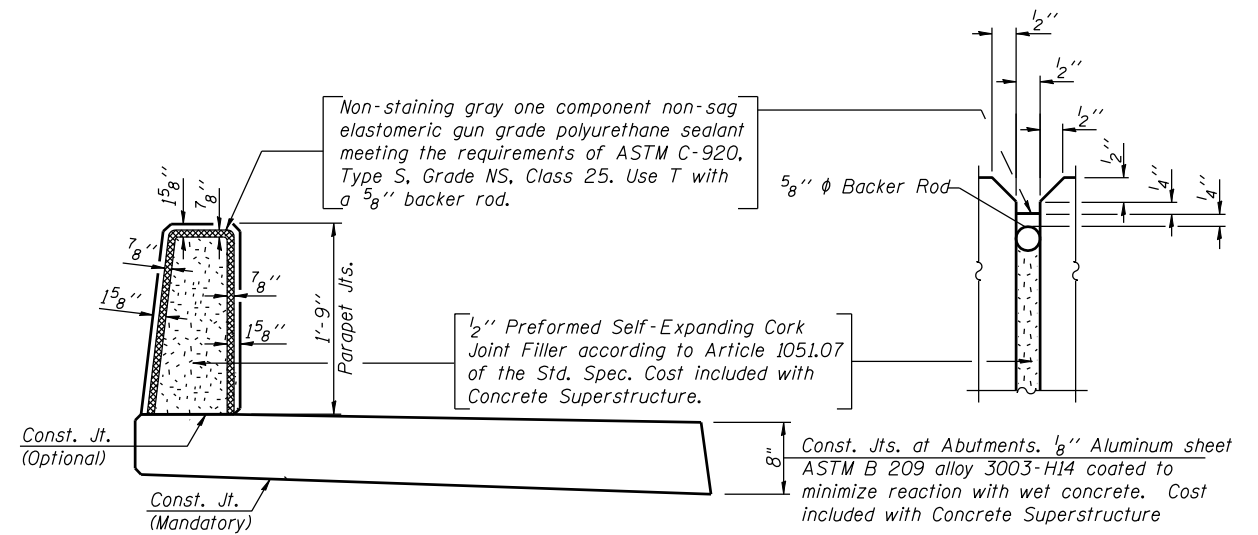
INSIDE ELEVATION OF SIDEWALK PARAPET



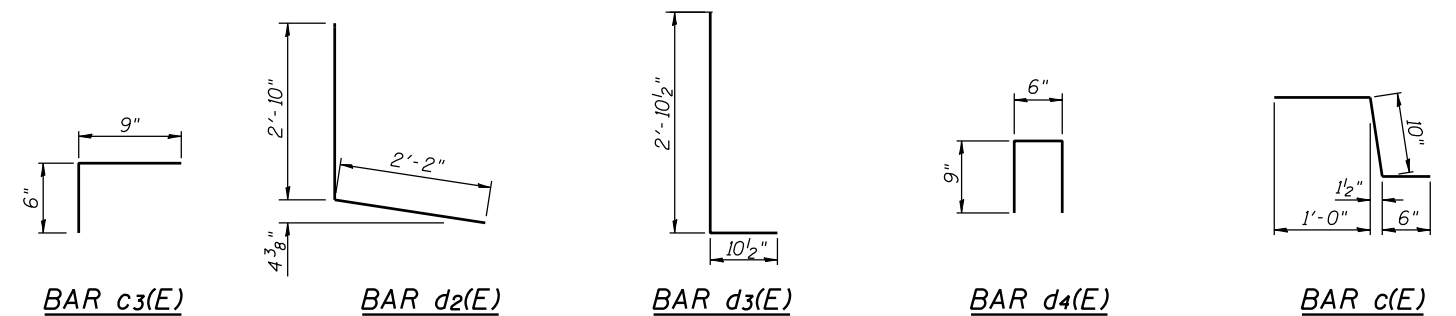
SECTION THRU SIDEWALK AND PARAPET
(Looking West)

Notes: For Scupper Details, see sheet 17 of 27.
For Bill of Materials, see sheet 10 of 27.

MINIMUM BAR LAP
#4 bar = 2'-0"
#8 bar = 5'-2"



SIDEWALK PARAPET JOINT DETAILS



BAR c3(E)

BAR d2(E)

BAR d3(E)

BAR d4(E)

BAR c(E)

FILE NAME = s:\p1\6300--6395\6346\023\micro\sh\str_plans\0470301-60132-006-SUPDET.dgn

STRAND ASSOCIATES, INC. ENGINEERS
1170 SOUTH HOUBOLT ROAD
JOLIET, ILLINOIS 60431
(815) 744-4200

USER NAME = briantf	DESIGNED <i>KDH</i>	REVISED -
PLOT SCALE =	CHECKED <i>AJS</i>	REVISED -
PLOT DATE = 5/1/2012	DRAWN <i>BJF</i>	REVISED -
	CHECKED <i>KDH</i>	REVISED -

**STATE OF ILLINOIS
DEPARTMENT OF TRANSPORTATION**

**SUPERSTRUCTURE DETAILS (2 OF 2)
STRUCTURE NO. 047-0301**

SHEET NO. 11 OF 27 SHEETS

F.A.P. RTE.	SECTION	COUNTY	TOTAL SHEETS	SHEET NO.
349	11 WRS-3	KENDALL	527	299
CONTRACT NO. 60132				

ILLINOIS FED. AID PROJECT