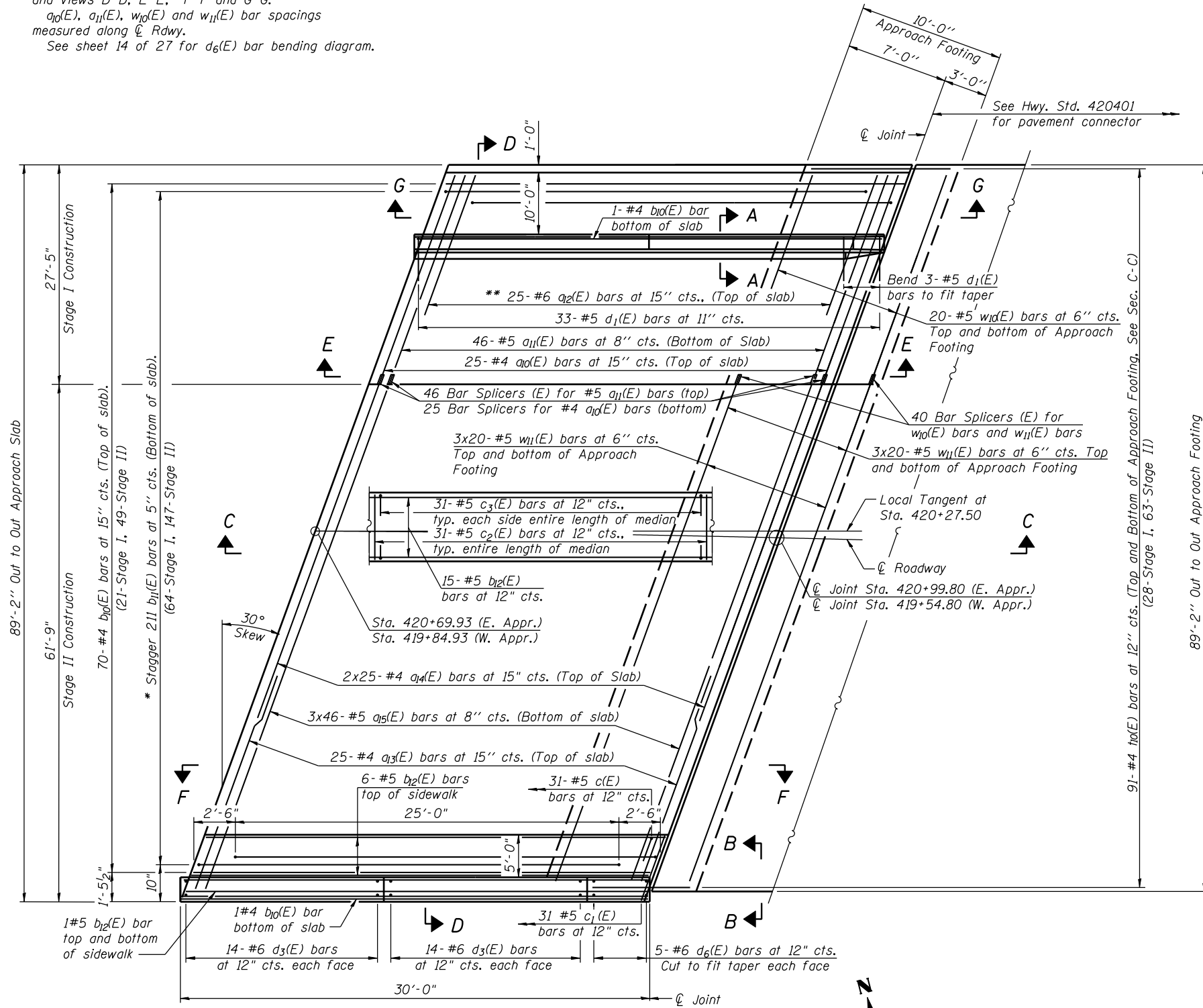


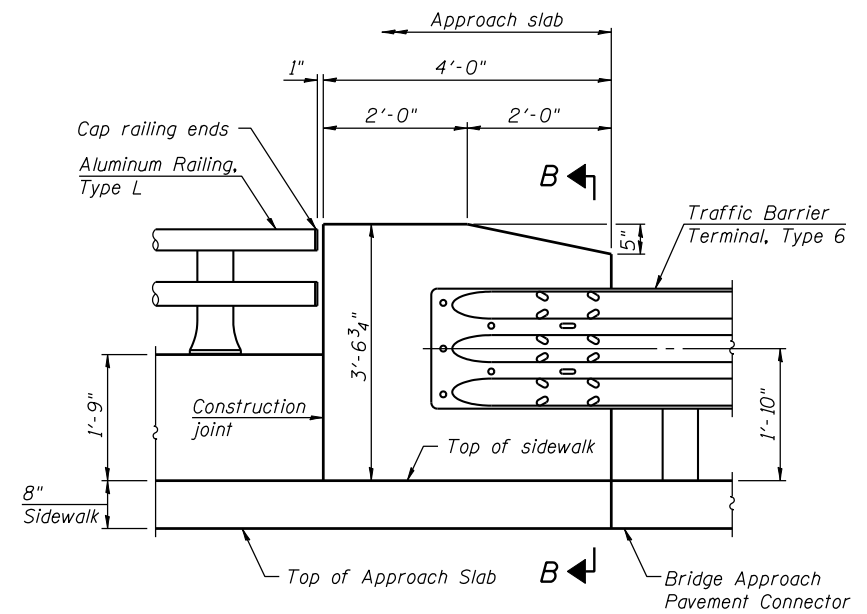
Notes:
 See sheet 14 of 27 for Sections C-C, D-D and Views D-D, E-E, F-F and G-G.
 $a_{1d}(E)$, $a_{1l}(E)$, $w_{1d}(E)$ and $w_{1l}(E)$ bar spacings measured along \hat{C} Rdwy.
 See sheet 14 of 27 for $d_6(E)$ bar bending diagram.



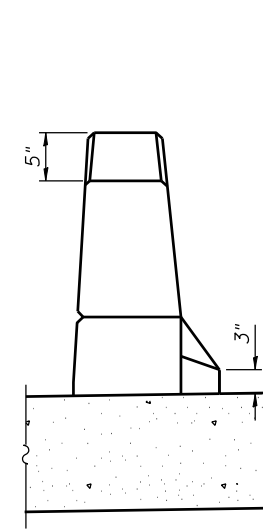
PLAN

East approach slab shown (West approach slab similar).
 Bicycle Railing, Parapet Railing, and Aluminum Railing, Type L not shown for clarity. See sheet 14 of 27 for Bridge Approach Slab Rail Post Spacing.
 * Tilt #9 $b_{1l}(E)$ bars as required to maintain clearance.
 ** Space between $a_{1d}(E)$ bars.

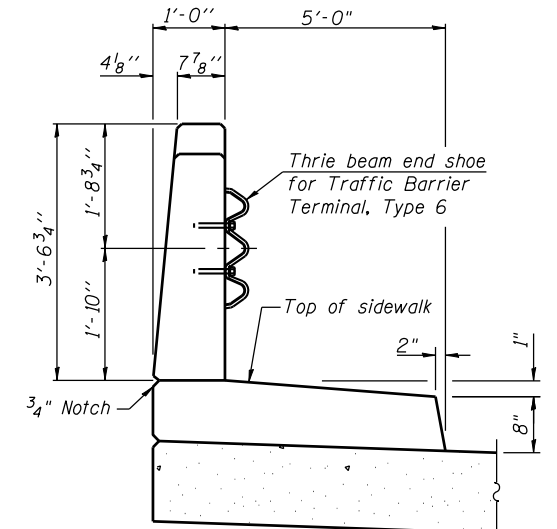
MIN. BAR LAP
 #5 bar = 3'-3"



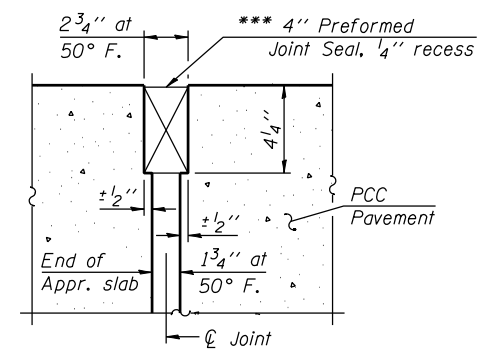
END BLOCK DETAIL



VIEW A-A



VIEW B-B



**RIGID PAVEMENT
 DETAIL A**

*** Cost included with Concrete Superstructure.

FILE NAME = s:\p1\6380--6395\6346\023\micro\sh\str_plans\0470301-60132-008-BAP.dgn

STRAND
 ASSOCIATES, INC.
 ENGINEERS
 1170 SOUTH HOUBOLT ROAD
 JOLIET, ILLINOIS 60431
 (815) 744-4200
 IDFPN NO. 184-001273

USER NAME = brianf
 DESIGNED KDH
 CHECKED AJS
 DRAWN BJF
 CHECKED KDH
 PLOT SCALE =
 PLOT DATE = 5/1/2012

DESIGNED KDH
 CHECKED AJS
 DRAWN BJF
 CHECKED KDH
 REVISED -
 REVISED -
 REVISED -
 REVISED -

**STATE OF ILLINOIS
 DEPARTMENT OF TRANSPORTATION**

**BRIDGE APPROACH SLAB DETAILS (1 OF 2)
 STRUCTURE NO. 047-0301**

SHEET NO. 13 OF 27 SHEETS

| | | | | |
|--------------------|----------|---------|--------------|-----------|
| F.A.P. RTE. | SECTION | COUNTY | TOTAL SHEETS | SHEET NO. |
| 349 | 11 WRS-3 | KENDALL | 527 | 301 |
| CONTRACT NO. 60132 | | | | |

ILLINOIS FED. AID PROJECT