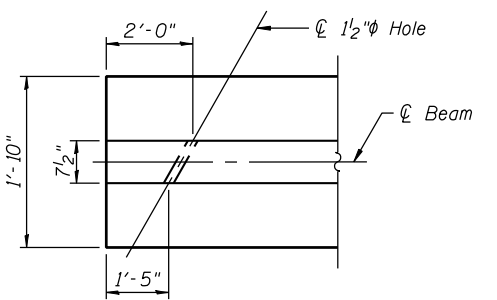


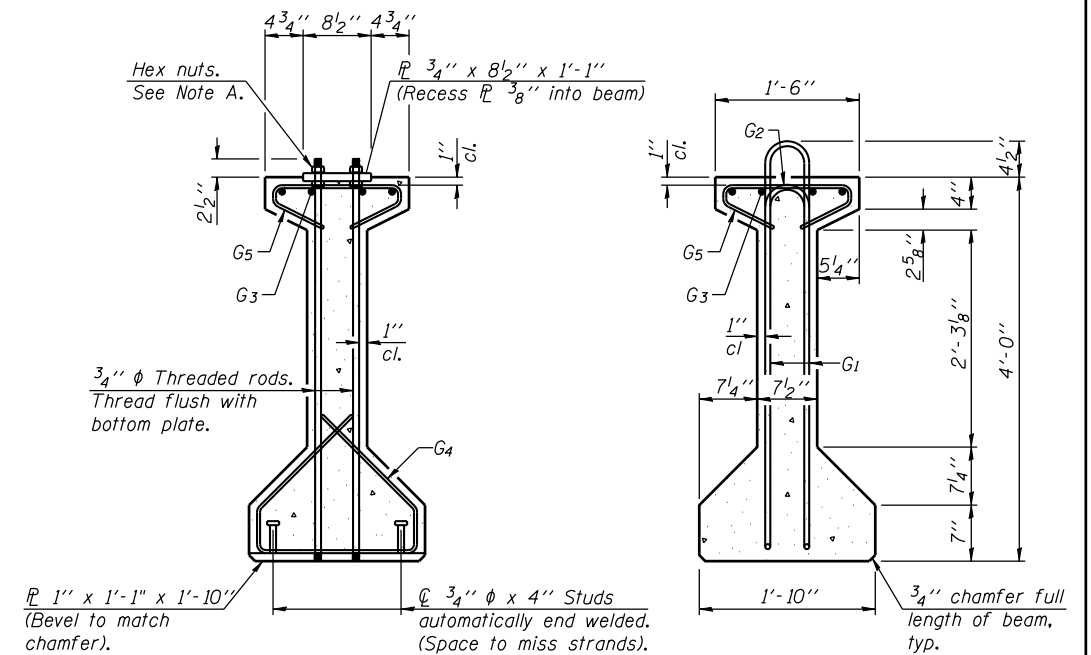
ELEVATION OF BEAM
(Showing reinforcement & dimensions)

- * 3 spaces at 3" = 9".
- ** 4-3/4" φ threaded dowel rods at 3" cts., Each Face.
- *** Holes to be formed along skew.

Note A:
Hex nuts (top and bottom) with lock washers (top). Only tighten sufficiently to compress lock washers.

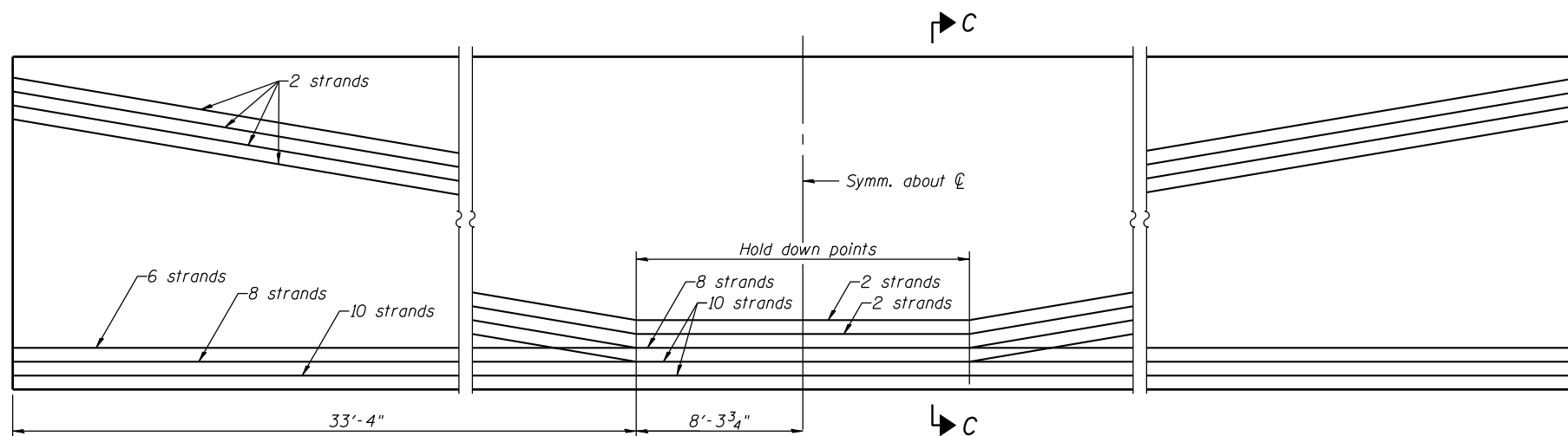


PLAN OF 1 1/2" I.D. FORMED HOLES FOR M2(e) BARS

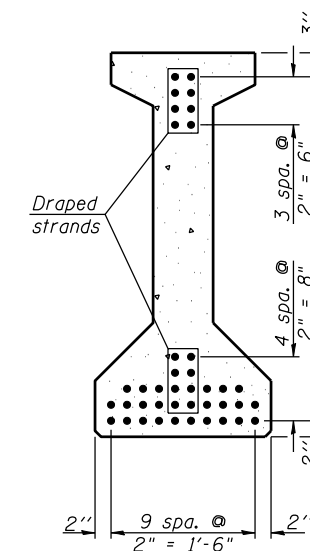


SECTION A-A

SECTION B-B



ELEVATION OF BEAM
(Showing prestressing steel)



SECTION C-C

*****BAR LIST
ONE BEAM ONLY**

Bar	No.	Size	Length	Shape
G1	129	#4	9'-6"	∩L
G2	12	#4	7'-11"	∩
G3	12	#7	30'-0"	—
G4	38	#3	5'-3"	∩
G5	83	#3	2'-9"	∩

***For information only

Notes:
See sheet 20 of 27 for additional details and Bill of Material.
Required release strength, f'ci, shall be 6000 psi.

FILE NAME = s:\p1\6380--6398\6346\023\micro\sh\str_plans\0470301-60132-014-BEAM.dgn

PI-4-48

7-1-10

1170 SOUTH HOUBOLT ROAD
JOLIET, ILLINOIS 60431
(815) 744-4200
IDFPR NO. 184-001273

USER NAME = briantf
DESIGNED KDH
CHECKED AJS
DRAWN BJF
CHECKED KDH
PLOT SCALE =
PLOT DATE = 5/1/2012

DESIGNED KDH
CHECKED AJS
DRAWN BJF
CHECKED KDH

REVISED -
REVISED -
REVISED -
REVISED -

**STATE OF ILLINOIS
DEPARTMENT OF TRANSPORTATION**

**48" PPC I-BEAM
STRUCTURE NO. 047-0301**

SHEET NO. 19 OF 27 SHEETS

F.A.P. RTE.	SECTION	COUNTY	TOTAL SHEETS	SHEET NO.
349	11 WRS-3	KENDALL	527	307
CONTRACT NO. 60132				

ILLINOIS FED. AID PROJECT