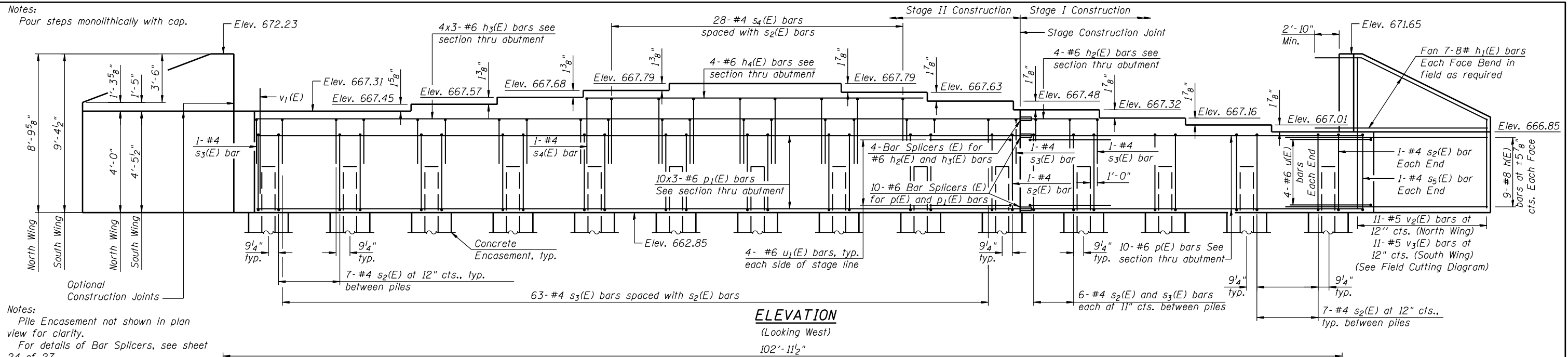
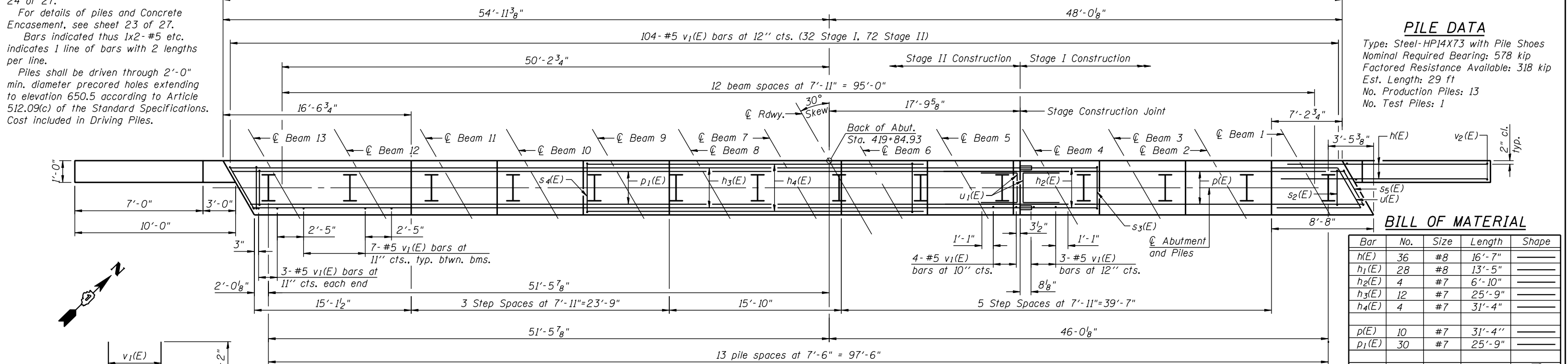


Notes:
Pour steps monolithically with cap.



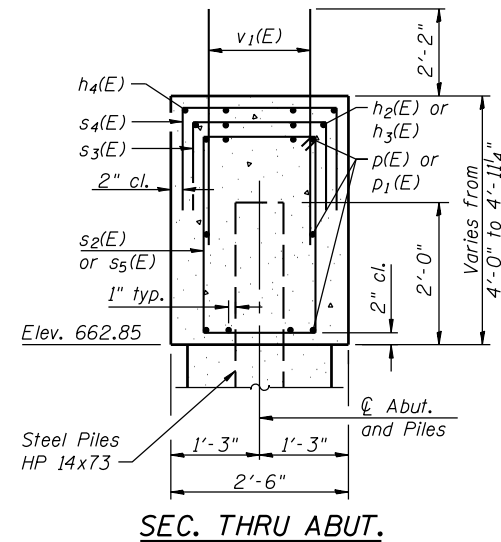
Notes:
Pile Encasement not shown in plan view for clarity.
For details of Bar Splicers, see sheet 24 of 27.
For details of piles and Concrete Encasement, see sheet 23 of 27.
Bars indicated thus 1x2-#5 etc. indicates 1 line of bars with 2 lengths per line.
Piles shall be driven through 2'-0" min. diameter precored holes extending to elevation 650.5 according to Article 512.09(c) of the Standard Specifications. Cost included in Driving Piles.

PILE DATA
Type: Steel-HP14X73 with Pile Shoes
Nominal Required Bearing: 578 kip
Factored Resistance Available: 318 kip
Est. Length: 29 ft
No. Production Piles: 13
No. Test Piles: 1

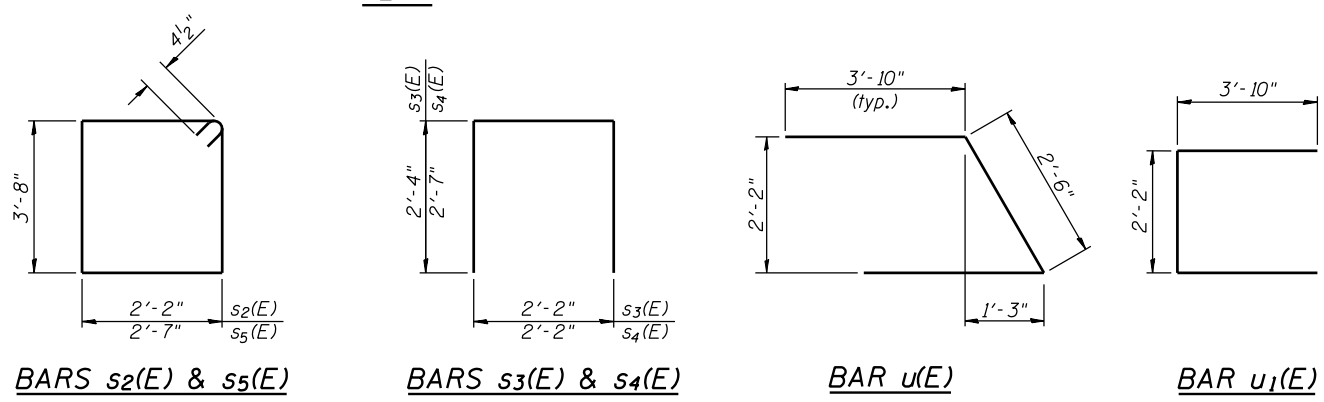


BILL OF MATERIAL

Bar	No.	Size	Length	Shape
h(E)	36	#8	16'-7"	—
h1(E)	28	#8	13'-5"	—
h2(E)	4	#7	6'-10"	—
h3(E)	12	#7	25'-9"	—
h4(E)	4	#7	31'-4"	—
p(E)	10	#7	31'-4"	—
p1(E)	30	#7	25'-9"	—
s2(E)	93	#4	12'-5"	□
s3(E)	72	#4	6'-10"	□
s4(E)	29	#4	7'-4"	□
s5(E)	2	#4	13'-3"	□
u(E)	8	#6	10'-2"	┌
u1(E)	8	#6	9'-10"	┌
v1(E)	194	#5	4'-4"	—
v2(E)	11	#5	13'-4"	—
v3(E)	11	#5	14'-6"	—
Structure Excavation			Cu. Yd.	216
Concrete Structures			Cu. Yd.	50
Concrete Encasement			Cu. Yd.	8
Reinforcement Bars, Epoxy Coated			Pound	8,460
Furnishing Steel Piles HP14x73			Foot	377
Driving Piles			Foot	377
Test Pile Steel HP14x73			Each	1
Pile Shoes			Each	14



FIELD CUTTING DIAGRAM
Order v2(E) and v3(E) full length.
Cut as shown and use remainder of bars in opposite face.



FILE NAME = s:\p1\6380-6395\6346\023\micro\sh\str.plans\0470301-60132-01E-ABUT.dgn

STRAND ASSOCIATES, INC.
1170 SOUTH HOUBOLT ROAD
JOLIET, ILLINOIS 60431
(815) 744-4200
IDFPR No. 184-001273

USER NAME = brianf	DESIGNED KDH	REVISED -
PLOT SCALE =	CHECKED AJS	REVISED -
PLOT DATE = 5/1/2012	DRAWN BJF	REVISED -
	CHECKED KDH	REVISED -

STATE OF ILLINOIS
DEPARTMENT OF TRANSPORTATION

WEST ABUTMENT DETAILS
STRUCTURE NO. 047-0301
SHEET NO. 21 OF 27 SHEETS

F.A.P. RTE. 349	SECTION 11 WRS-3	COUNTY KENDALL	TOTAL SHEETS 527	SHEET NO. 309
			CONTRACT NO. 60132	
ILLINOIS FED. AID PROJECT				