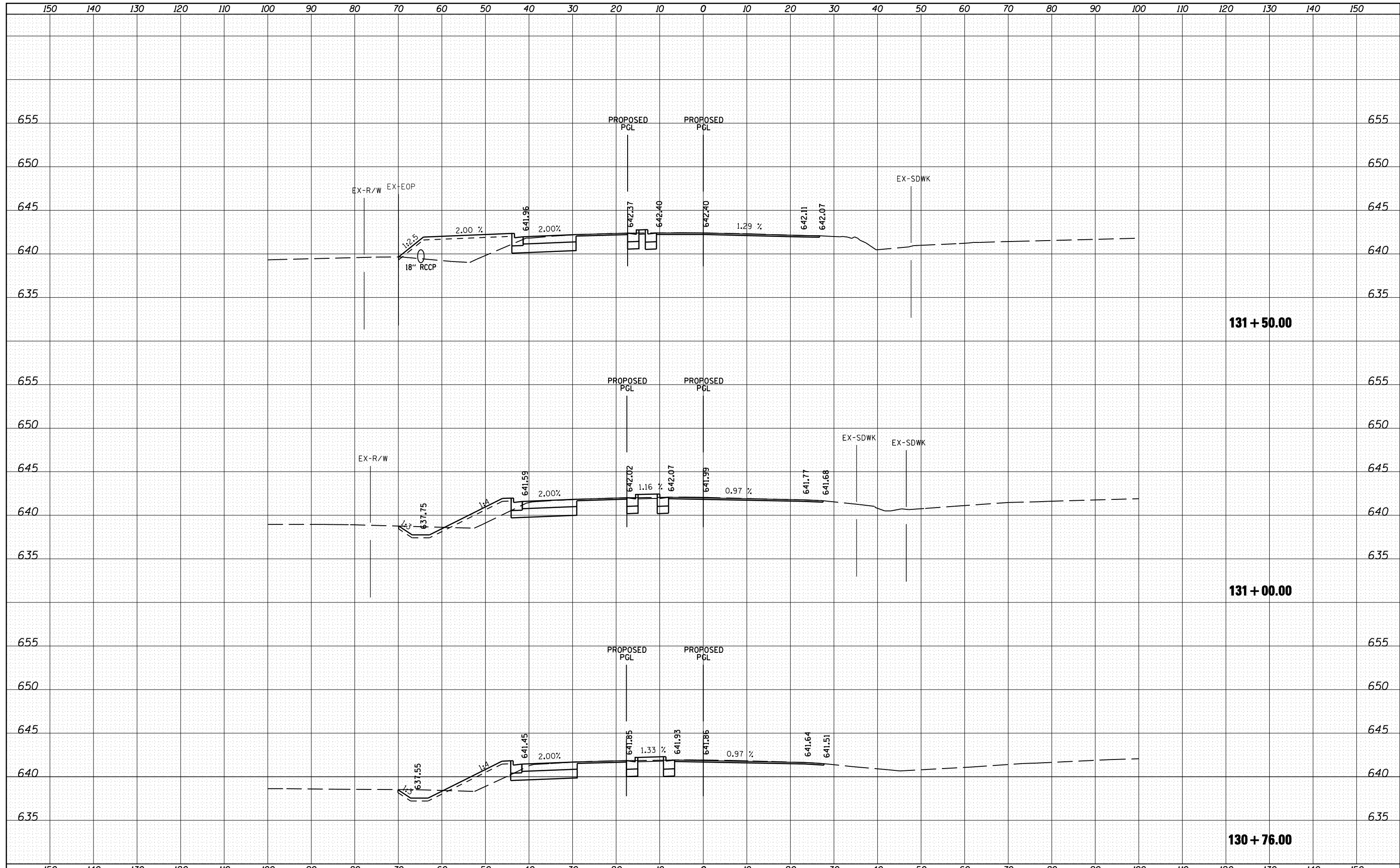


DATE	
BY	
SURVEYED	
PLOTTED	
TEMPLATE	
AREAS	
CHECKED	
FINAL SURVEY	
NOTE BOOK	
NO.	

DATE	
BY	
SURVEYED	
PLOTTED	
TEMPLATE	
AREAS	
CHECKED	
ORIGINAL SURVEY	
NOTE BOOK	
NO.	



FILE NAME =	USER NAME = 1654	DESIGNED - NGS	REVISED -	STATE OF ILLINOIS DEPARTMENT OF TRANSPORTATION	U.S. ROUTE 30 AT IL ROUTE 31 CROSS SECTIONS - IL ROUTE 31			F.A. RTE.	SECTION	COUNTY	TOTAL SHEETS	SHEET NO.
ht:\jobs\2010\20103003\cod\site\dgn\refs\IL-31\10133-sh.tl;IL31-xsec-NB.dgn		DRAWN - NGS	REVISED -		349	(10 & 11 VB) R-3	*	507	459			
PLOT SCALE = 20.0000' / IN.		CHECKED - RS	REVISED -		* KANE AND KENDALL CONTRACT NO. 60133							
PLOT DATE = 6/15/2012		DATE - 06/15/2012	REVISED -		ILLINOIS FED. AID PROJECT							

SCALE: SHEET NO. 33 OF 39 SHEETS STA. 130+76.00 TO STA. 131+50.00